

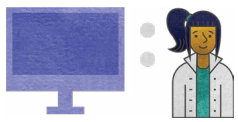



# TECHNOLOGY FOOTPRINT

## JACKSON PARISH SNAPSHOT

[ 5 SCHOOLS • 2,285 STUDENTS • 1,950 DEVICES ]

Since 2011, the state has been reporting school system progress relative to broadband and technology availability to students. This snapshot depicts current status in comparison to the state. [View the full report](#) providing an overview of Louisiana's technology readiness and educational technology progress.



### DEVICES

#### DISTRICT

#### STATE

AVERAGE STUDENT TO DEVICE RATIO	1.2:1	1.1:1
---------------------------------	-------	-------

#### PERCENT OF DEVICES BY TYPE:

TABLET	0%	3%
LAPTOP	1%	20%
CHROMEBOOK	68%	52%
DESKTOP	30%	24%
VDI	0%	1%



### BANDWIDTH\*

#### DISTRICT

#### STATE

AVERAGE BANDWIDTH PER STUDENT	4376	1.13 MBPS
-------------------------------	------	-----------



### STAFFING

#### DISTRICT

#### STATE

EDUCATIONAL TECHNOLOGY STAFF	0	AVERAGE 3.4 PER DISTRICT
INFORMATION TECHNOLOGY STAFF	2	AVERAGE 6.1 PER DISTRICT

\* Many Louisiana school systems utilize caching, peer-to-peer (P2P), and other network optimization technologies which ensure more efficient use of bandwidth resources resulting in lower broadband requirements for delivering expanded educational offerings.