

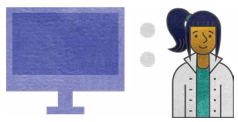



# TECHNOLOGY FOOTPRINT

## CAMERON PARISH SNAPSHOT

[ 4 SCHOOLS • 1,355 STUDENTS • 2,715 DEVICES ]

Since 2011, the state has been reporting school system progress relative to broadband and technology availability to students. This snapshot depicts current status in comparison to the state. [View the full report](#) providing an overview of Louisiana's technology readiness and educational technology progress.



### DEVICES

#### DISTRICT

#### STATE

AVERAGE STUDENT TO DEVICE RATIO	1:1	1:1
---------------------------------	-----	-----

#### PERCENT OF DEVICES BY TYPE:

TABLET	30%	3%
LAPTOP	12%	20%
CHROMEBOOK	58%	52%
DESKTOP	0%	24%
VDI	0%	1%



### BANDWIDTH\*

#### DISTRICT

#### STATE

AVERAGE BANDWIDTH PER STUDENT	1476	1.13 MBPS
-------------------------------	------	-----------



### STAFFING

#### DISTRICT

#### STATE

EDUCATIONAL TECHNOLOGY STAFF	1	AVERAGE 3.4 PER DISTRICT
INFORMATION TECHNOLOGY STAFF	6	AVERAGE 6.1 PER DISTRICT

\* Many Louisiana school systems utilize caching, peer-to-peer (P2P), and other network optimization technologies which ensure more efficient use of bandwidth resources resulting in lower broadband requirements for delivering expanded educational offerings.