

# EDUCATOR RESOURCE GUIDE

Louisiana students are just as smart and capable as any students in America. While Louisiana is seeing positive growth as a result of its efforts to support schools and school systems—from an increase in the percentage of proficient early childhood centers serving at-risk children, to an increase in students scoring mastery in 3rd grade, and graduation and credential rates reaching an all-time high—there is still work that needs to be done.

To ensure every student is able to achieve their potential, Louisiana educators must ensure that, every day, all students attend schools that treat them with dignity and respect, where they have the opportunity to:



**build** knowledge of the world,



**read** meaningful texts,



**express** ideas through writing and speaking, and

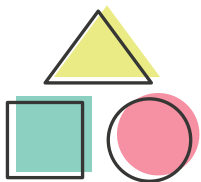


**solve** complex problems.

Louisiana's [academic plan](#) for the 2019-2020 school year ensures that teachers have the support they need to be fully prepared to deliver high-quality instruction for every student every day. This includes:

- Principals, leadership teams, content leaders and mentor teachers using observations, common planning time, and coaching to support teachers in delivering high-quality lessons.
- School systems creating supportive structures to facilitate teacher preparation and student learning.
- The Department providing tools and resources to support school systems in executing their academic plans.

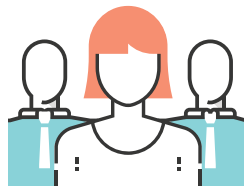
The **Educator Resource Guide** serves as a centralized tool to provide teachers, school and school system leaders with the resources to effectively start the 2019-2020 school year within five priority areas:



**UNIFIED EARLY CHILDHOOD SYSTEM**



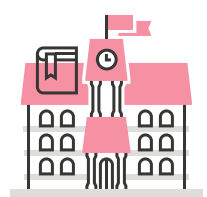
**ACADEMIC ALIGNMENT**



**TEACHER AND LEADER PREPARATION**



**PATHWAYS TO COLLEGE OR A CAREER**



**TARGETED SUPPORT FOR STRUGGLING SCHOOLS**

► [TEACHER RESOURCES AND SUPPORT](#) ◀

► [PRINCIPAL RESOURCES AND SUPPORT](#) ◀

► [SCHOOL SYSTEM RESOURCES AND SUPPORT](#) ◀

# TEACHER RESOURCES AND SUPPORT

## MEETINGS AND EVENTS

- [2019-2020 School System Support Calendar](#)
- [Annual Teacher Leader Summit](#)
- [Louisiana Teacher and Principal of the Year Programs](#)

## COMMUNICATION STREAMS

- [Teacher Leader Newsletter](#)
- [Counselor Connect Newsletter](#)
- [Early Childhood Connection Newsletter](#)

## GENERAL RESOURCES: What are the key online resources I need to be successful this year?

- [Teacher Support Toolbox](#)
- [Counselor Support Toolbox](#)
- [Teacher Leaders Library](#)
- [Instructional Resources by Age or Grade](#)
- [Instructional Resources by Subject](#)
- [Mentor Teacher Training](#)
- [Content Leader Training](#)
- [Teach LA Live! Educator Certification Portal](#)
- [Compass](#)

## PLANNING & INSTRUCTIONAL RESOURCES:

What should my students know and be able to do and how do I monitor their progress?

<b>SPECIAL POPULATIONS</b>	<ul style="list-style-type: none"> <li>• <a href="#">Louisiana Connectors for Students with Significant Disabilities</a></li> <li>• <a href="#">Special Populations Library</a></li> <li>• <a href="#">Students with Disabilities Guidebook</a></li> </ul>	<ul style="list-style-type: none"> <li>• <a href="#">LA Connectors for English Learners</a></li> <li>• <a href="#">English Learner Library</a></li> <li>• <a href="#">English Learner Guidebook</a></li> <li>• <a href="#">Diverse Learners Guide</a></li> </ul>
<b>EARLY CHILDHOOD</b>	<ul style="list-style-type: none"> <li>• <a href="#">Louisiana Birth to Five Early Learning and Development Standards</a></li> </ul>	<ul style="list-style-type: none"> <li>• <a href="#">Linking Tier I Curriculum to GOLD</a></li> <li>• <a href="#">Connecting CLASS and Tier I Curriculum</a></li> <li>• <a href="#">CLASS Video Library</a></li> </ul>
<b>ELA</b>	<ul style="list-style-type: none"> <li>• <a href="#">Louisiana Student Standards for ELA</a></li> </ul>	<ul style="list-style-type: none"> <li>• <a href="#">ELA Guidebooks 2.0</a></li> </ul>
<b>MATH</b>	<ul style="list-style-type: none"> <li>• <a href="#">Louisiana Student Standards for Math</a></li> </ul>	<ul style="list-style-type: none"> <li>• <a href="#">Louisiana Guides to Implementing Tier 1 Curriculum</a></li> </ul>
<b>SCIENCE</b>	<ul style="list-style-type: none"> <li>• <a href="#">Louisiana Student Standards for Science</a></li> </ul>	<ul style="list-style-type: none"> <li>• <a href="#">High Quality Pilots</a></li> </ul>
<b>SOCIAL STUDIES</b>	<ul style="list-style-type: none"> <li>• <a href="#">Louisiana Student Standards for Social Studies</a></li> </ul>	<ul style="list-style-type: none"> <li>• <a href="#">Social Studies Scope and Sequence and Companion Documents</a></li> </ul>
<b>HIGH SCHOOL</b>	<ul style="list-style-type: none"> <li>• <a href="#">Jump Start Graduation Pathways</a></li> <li>• <a href="#">All Things Jump Start Portal</a></li> </ul>	<ul style="list-style-type: none"> <li>• <a href="#">Special Education Guidance for High School Students</a></li> <li>• <a href="#">Louisiana STEM Pathways</a></li> </ul>
<b>GOAL SETTING &amp; ASSESSMENTS</b>	<ul style="list-style-type: none"> <li>• <a href="#">2019-2020 Assessment Calendar</a></li> <li>• <a href="#">Assessment Guidance Library Including Sample Items</a> (19-20 Assessment Guides now available)</li> <li>• <a href="#">Practice Tests Library</a></li> <li>• <a href="#">Assessment Library</a></li> <li>• <a href="#">Teacher's Guide to LEAP 360</a></li> </ul>	<ul style="list-style-type: none"> <li>• <a href="#">LEAP 360: Diagnostics, Interims, and EAGLE, K-2 Tasks</a></li> <li>• <a href="#">Goal-Setting Templates and Sample Goals</a></li> <li>• <a href="#">GOLD Guidance 2019-2020 (pre-K)</a></li> <li>• <a href="#">PreK to 3rd Grade Assessment Guidance 2019-2020</a></li> <li>• <a href="#">2019 Student Progress Overview</a></li> </ul>

## FAMILY ENGAGEMENT RESOURCES: How do I engage families in student learning?

- [Family Support Toolbox](#)
- [Parent Back-to-School Guides: For students in grades PK-2, 3-12, English learners, and students with disabilities](#)
- [Parent Guides to Louisiana State Tests and Results](#) available in Spanish, Vietnamese, and Arabic
- [Jump Start Brochure](#)

# PRINCIPAL RESOURCES AND SUPPORT

## MEETINGS AND EVENTS

- [2019-2020 School System Support Calendar](#)
- [Louisiana Principals Fellowship](#)
- [School Support Institutes](#)
- [Louisiana Teacher and Principal of the Year Programs](#)

## COMMUNICATION STREAMS

- [Weekly School System Newsletter](#)
- [Counselor Connect Newsletter](#)
- [Early Childhood Connection Newsletter](#)
- [Teacher Leader Newsletter](#)
- [Believe and Prepare Newsletter](#)
- [Principal Newsletter](#)

## GENERAL RESOURCES: What are the key online resources I need to be successful this year?

- [Principal Support Toolbox](#)
- [Teacher Support Toolbox](#)
- [Counselor Support Toolbox](#)
- [English Learner Library](#)
- [Special Populations Library](#)
- [Compass](#)
- [All Things Jump Start Portal](#)
- [School Improvement Library](#)
- [Teach LA Live! Educator Certification Portal](#)

## PLANNING & INSTRUCTIONAL RESOURCES:

What should my students know and be able to do and how do I monitor their progress?

### GUIDEBOOKS

- [Principal Guidebook](#)
- [High School Planning Guidebook](#)
- [Students with Disabilities Guidebook](#)
- [English Learner Guidebook](#)
- [Pre-K-3 Guidebook for Sites and System Leaders](#)
- [LA 4 Early Childhood Program Guidebook](#)
- [TAP and NIET Best Practice Guidance](#)

### INSTRUCTIONAL SUPPORT

- [PD Vendor Guide](#)
- [Supplemental Course Academy](#)
- [Louisiana STEM Pathways](#)
- [Course Choice Provider Scheduling Tool](#)
- [CLASS Video Library](#)
- [Classroom and Common Planning Time Observation Tools](#)
- [5 Tips for Early Childhood Sites](#)

### GOAL SETTING & ASSESSMENTS

- [2019-2020 Assessment Calendar](#)
- [Assessment Guidance Library Including Sample Items](#) (19-20 Assessment Guides now available)
- [LEAP 360: Diagnostics, Interims, and EAGLE, K-2 Tasks](#)
- [A District's Guide to LEAP 360](#)
- [Practice Tests Library](#)
- [Assessment Library](#)
- [Assessment and Accountability Month-by-Month Checklist](#)
- [GOLD Guidance 2019-2020 \(pre-K\)](#)
- [GOLD® Teaching Strategies Guide for Principals](#)
- [Goal-Setting Templates and Recommended Targets](#)
- [PreK to 3rd Grade Assessment Guidance 2019-2020](#)
- [SPS Calculators](#)
- [2019 Student Progress Overview](#)

## WORKFORCE RESOURCES: How do I build capacity within my school to ensure student success?

- [Mentor Teacher Training](#)
- [District Workforce Reports](#)
- [Teacher Effectiveness Data](#)
- [Content Leader Training](#)
- [Regional Workforce Reports](#)
- [Louisiana's Alternate Certification Preparation Toolkit](#)

## FAMILY ENGAGEMENT RESOURCES: How can my school engage families in student learning?

- [Family Support Toolbox](#)
- [Parent Back-to-School Guides: For students in grades PK-2, 3-12, English learners, and students with disabilities](#)
- [School Performance Scores Video](#)
- [2019-2020 Back-to-School Night Presentation](#)
- [Parent Guides to Louisiana State Tests and Results](#) available in Spanish, Vietnamese, and Arabic
- [Jump Start Brochure](#)
- [Family Engagement Policies and Best Practices](#)
- [Internet Safety Flyer](#)

# SCHOOL SYSTEM RESOURCES AND SUPPORT

## MEETINGS AND EVENTS

- [2019-2020 School System Support Calendar](#)
- [Louisiana Principals Fellowship](#)
- [Annual Teacher Leader Summit](#)
- [School Support Institutes](#)
- [Super App Launch for 2020-2021](#)
- [Super App Collaborations](#)
- [Spring Collaborations](#)
- [Louisiana Teacher and Principal of the Year Programs](#)

## COMMUNICATION STREAMS

- [Weekly School System Newsletter](#)
- [Weekly Charter School Newsletter](#)
- [Weekly Nonpublic Newsletter](#)
- [Early Childhood Connection Newsletter](#)
- [Monthly Superintendents Call](#)
- [Monthly School System Planning Call](#)
- [Assessment & Accountability Monthly Call](#)
- [Monthly Data Manager Webinar](#)
- [Monthly Special Education Leader Webinar](#)

## GENERAL RESOURCES: What are the key online resources we need to be successful this year?

- [School System Support Toolbox](#)
- [Teacher Support Toolbox](#)
- [Principal Support Toolbox](#)
- [Counselor Support Toolbox](#)
- [Special Populations Library](#)
- [English Learner Library](#)
- [Early Childhood Resources](#)
- [All Things Jump Start Portal](#)
- [Compass](#)
- [2019-2020 Network Map](#)
- [School Improvement Library](#)
- [School System Planning](#)
- [Teach LA Live! Educator Certification Portal](#)
- [2019-2020 School System Planning Guide](#)

## PLANNING & INSTRUCTIONAL RESOURCES:

What should students know and be able to do and how do we monitor their progress?

### GUIDEBOOKS

- [High School Planning Guidebook](#)
- [Students with Disabilities Guidebook](#)
- [English Learner Guidebook](#)
- [Back to School Data Sharing MOU Guidance](#)
- [Data Governance and Privacy](#)
- [PreK-3 Guidebook for Sites and System Leaders](#)
- [Guide to Early Childhood Curriculum, Assessments, and Professional Development](#)
- [TAP and NIET Best Practice Guidance](#)
- [Early Childhood Accountability Guide](#)

### INSTRUCTIONAL SUPPORT

- [PD Vendor Guide](#)
- [Instructional Materials Reviews](#)
- [Supplemental Course Academy](#)
- [Course Choice Provider Scheduling Tool](#)
- [Guidance on Using CLASS for COMPASS](#)
- [CLASS Video Library](#)
- [Louisiana STEM Pathways](#)

### GOAL SETTING & ASSESSMENTS

- [2019-2020 Assessment Calendar](#)
- [Assessment and Accountability Month-by-Month Checklist](#)
- [Assessment Guidance Library Including Sample Items \(19-20 Assessment Guides now available\)](#)
- [A District's Guide to LEAP 360](#)
- [LEAP 360: Diagnostics, Interims, and EAGLE, K-2 Tasks](#)
- [Accountability Commission Materials](#)
- [Compass System 2017-2018](#)
- [Goal-Setting Templates and Recommended Targets](#)
- [GOLD Guidance 2019-2020 \(pre-K\)](#)
- [PreK to 3rd Grade Assessment Guidance 2019-2020](#)
- [Practice Tests Library](#)
- [Assessment Library](#)
- [SPS Calculators](#)

## WORKFORCE RESOURCES: How do we build capacity within our schools to ensure student success?

- [Mentor Teacher Training](#)
- [Content Leader Training](#)
- [Teacher Effectiveness Data](#)
- [District Workforce Reports](#)
- [Regional Workforce Reports](#)
- [Louisiana's Alternate Certification Preparation Toolkit](#)
- [2018 Sample Residency Program MOU](#)

## FAMILY ENGAGEMENT RESOURCES: How do we engage families in student learning?

- [Family Support Toolbox](#)
- [Parent Back-to-School Guides: For students in grades PK-2, 3-12, English learners, and students with disabilities](#)
- [2019-2020 Back-to-School Night Presentation](#)
- [Parent Guides to Louisiana State Tests and Results available in Spanish, Vietnamese, and Arabic](#)
- [Jump Start Brochure](#)
- [Family Engagement Policies and Best Practices](#)