

New Resources for Teaching the Pacific Theater of World War II

Dr. Joshua Goodman

The National WWII Museum



Today's Mission

- **Identify key teachable aspects of the Pacific Theater.**
- **Introduce Vol. 1: The War in the Pacific**

ww2classroom.org

- **Discuss strategies for implementing the curriculum in the classroom.**

Quickwrite

- **What are THREE things students absolutely must understand about the Pacific Theater of World War II?**
- **Identify ONE important aspect of the Pacific Theater you either don't teach or gloss over, and explain why.**
(Be honest! We're here to help each other!)

A black and white photograph showing a line of soldiers wading across a wide river. The soldiers are carrying equipment on their heads and backs. The background is filled with a dense line of palm trees. The image is faded and serves as a background for the title text.

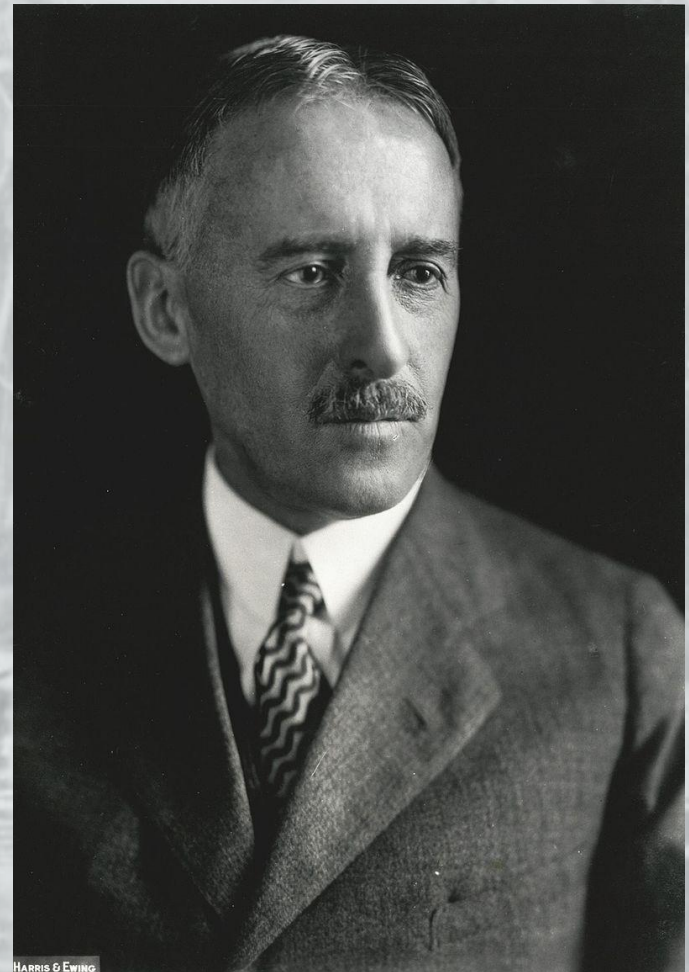
A Quick Overview of the Pacific Theater

Japanese Imperialist Expansion



The US Response

- **Isolationism**
- **Stimson Doctrine**



A Geopolitical Tennis Match

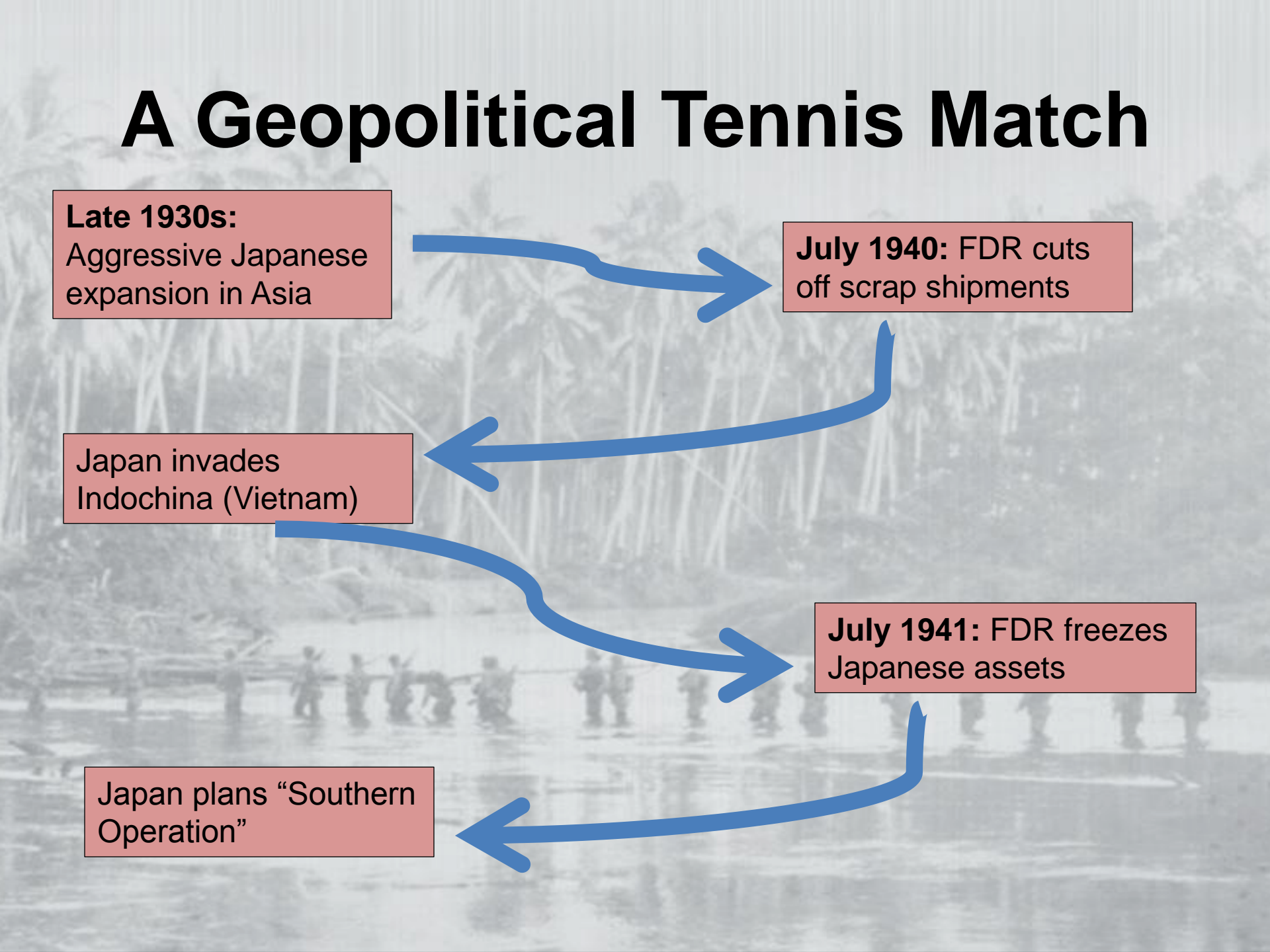
Late 1930s:
Aggressive Japanese expansion in Asia

July 1940: FDR cuts off scrap shipments

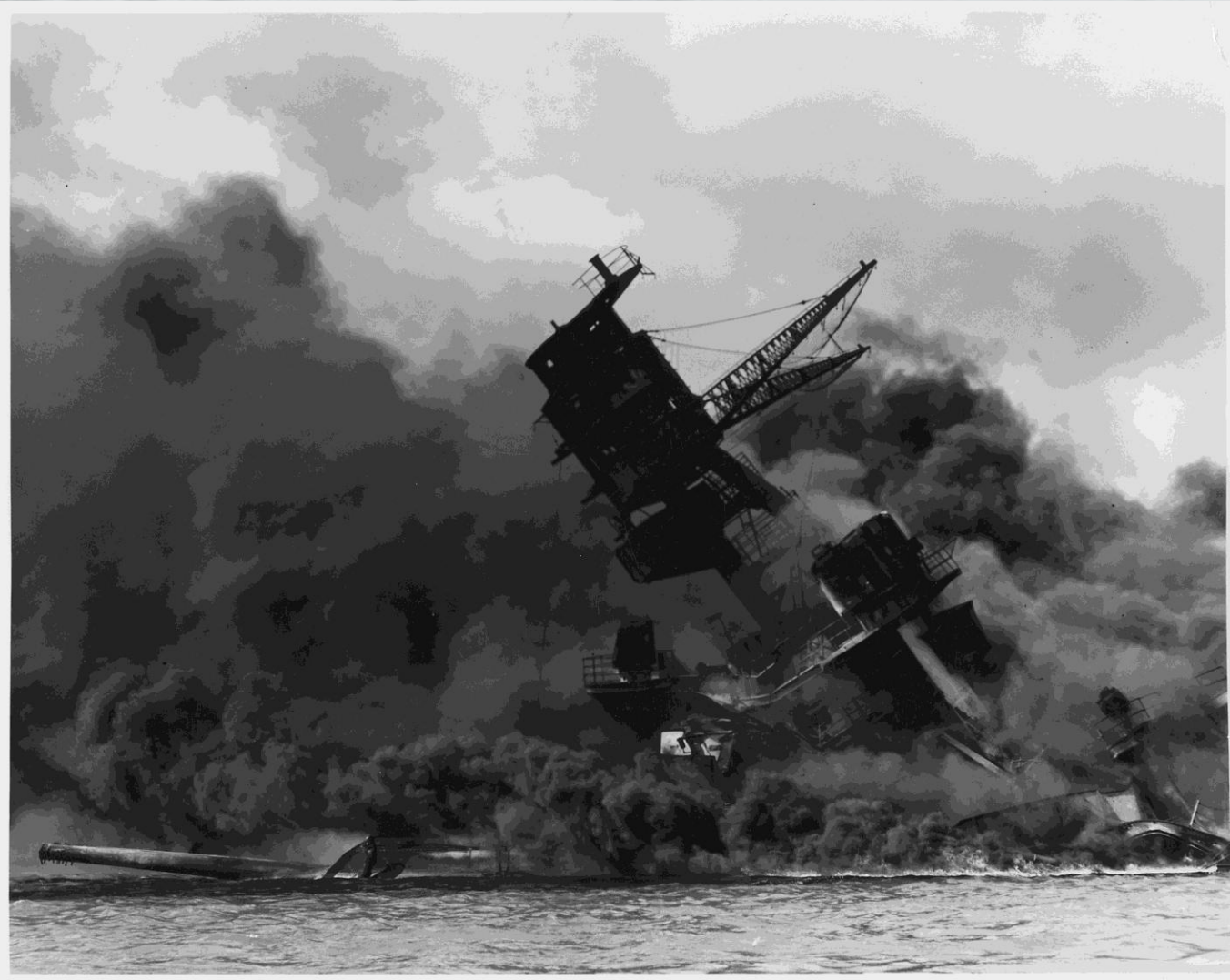
Japan invades Indochina (Vietnam)

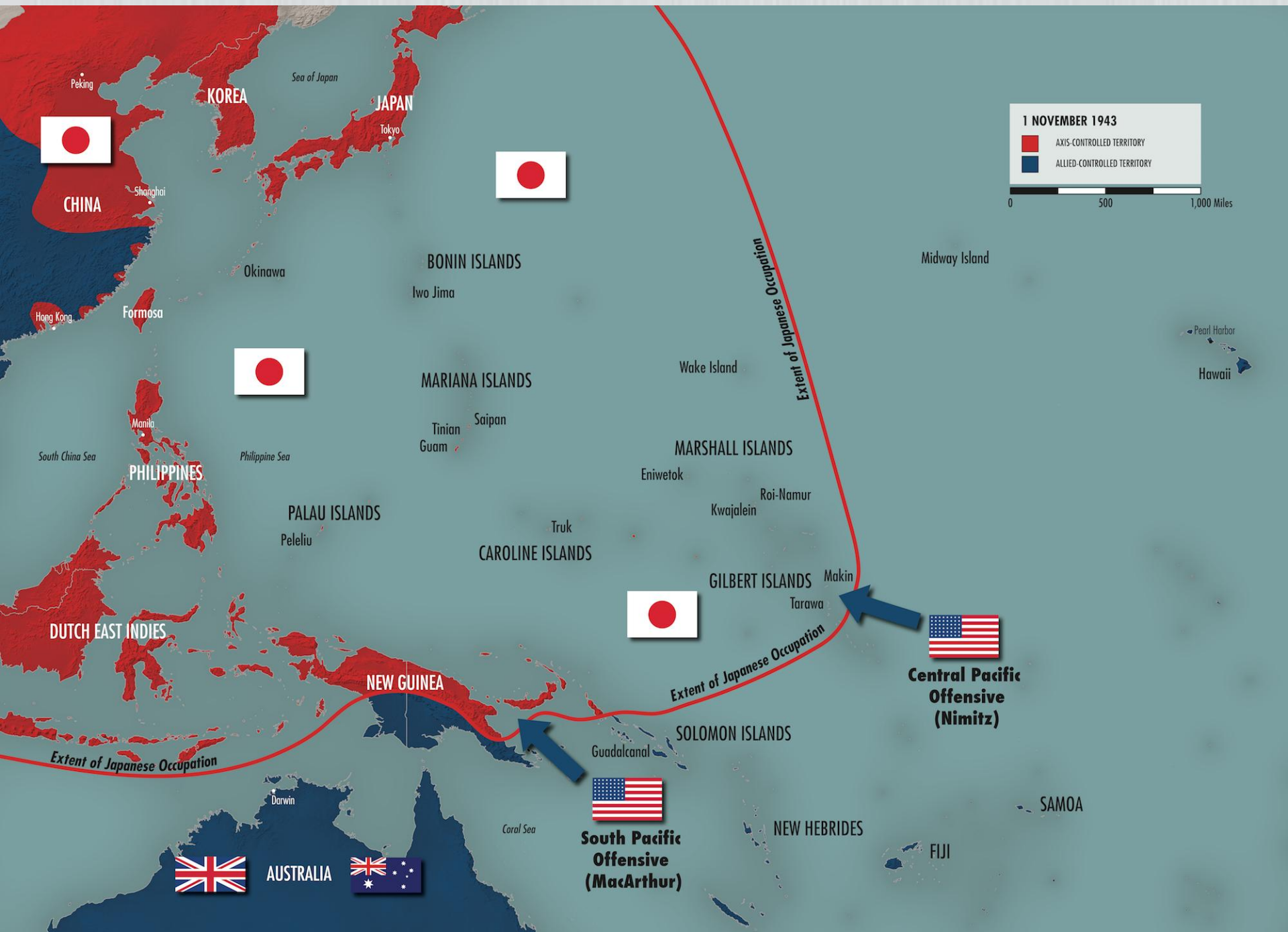
July 1941: FDR freezes Japanese assets

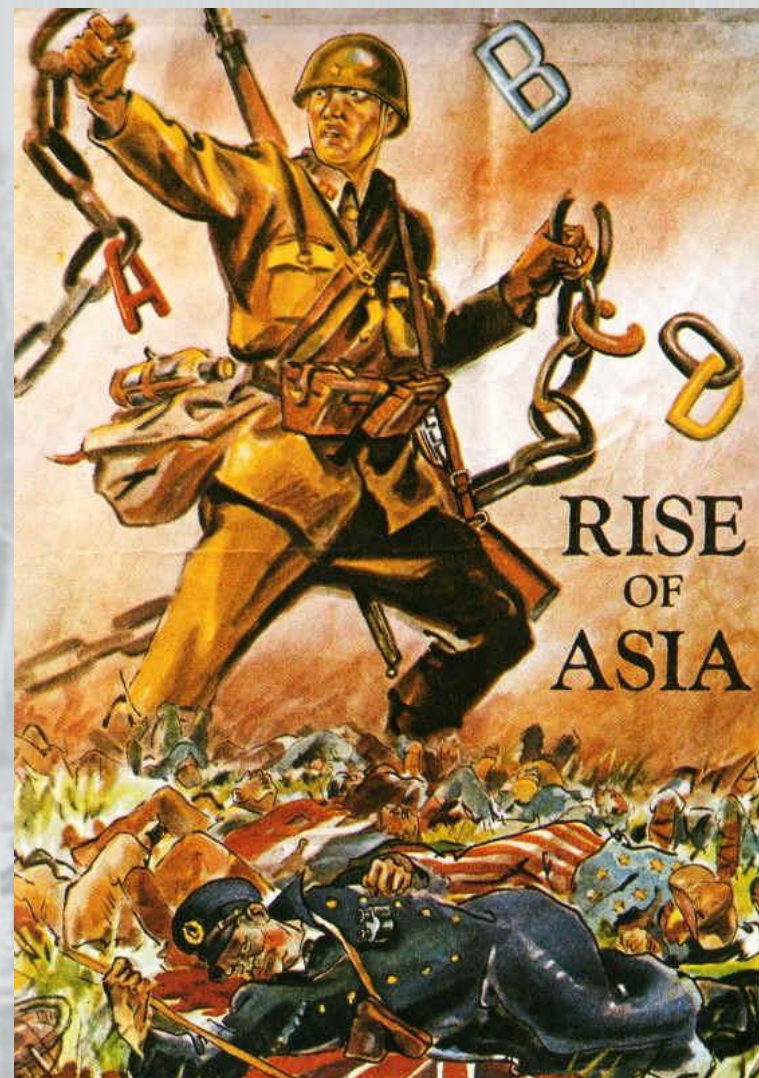
Japan plans "Southern Operation"



“A Date Which Shall Live in Infamy”







Louseous Japanicas

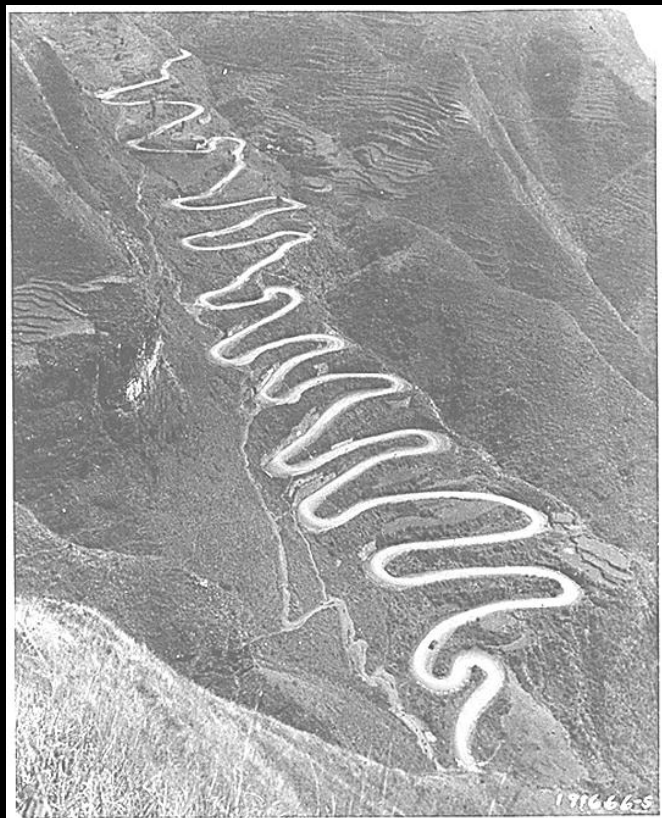
The first serious outbreak of this lice epidemic was officially noted on December 7, 1941, at Honolulu, T. H. To the Marine Corps, especially trained in combating this type of pestilence, was assigned the gigantic task of extermination. Extensive experiments on Guadalcanal, Tarawa, and Saipan have shown that this louse inhabits coral atolls in the South Pacific, particularly pill boxes, palm trees, caves, swamps and jungles.



Flame throwers, mortars, grenades and bayonets have proven to be an effective remedy. But before a complete cure may be effected the origin of the plague, the breeding grounds around the Tokyo area, must be completely annihilated.

**THIS
IS THE
ENEMY**









Group Exercise:

**Strategic Decision-Making in
the Pacific**



Group Exercise:

Race and War in the Pacific



Group Exercise:

**Building a Photo Timeline of
the War in the Pacific**

Debriefing



The lesson plans and other curriculum materials associated with this presentation are freely available online at
ww2classroom.org

For further information about this and other curriculum resources available from The National WWII Museum, please contact:

**Dr. Joshua Goodman,
Teacher Programs & Curriculum Coordinator
(504)-528-1944, ext. 264
Joshua.Goodman@nationalww2museum.org**