



Early Childhood
IMPROVING SCHOOL READINESS

Early Childhood Care and Education Commission: Update on Legislative Recommendations

September 19, 2019

Agenda

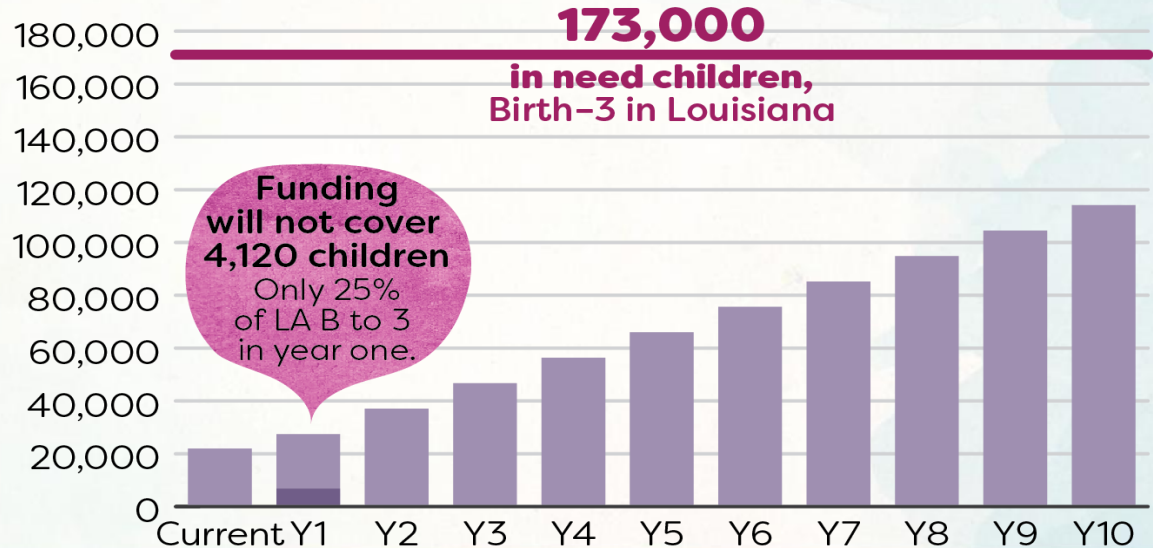
- I. Call to Order
- II. Roll Call
- III. Approval of Minutes
- IV. Consideration of a Report on the Ready Start Model
- V. A Ready Start Panel Discussion
- VI. Louisiana Policy Institute for Children & Advocacy and Communications Solutions: LA B-3 Toolkit
- VII. Public Comment
- VIII. Adjournment

The Legislative Charge of the Commission

The commission will consider approaches to the legislative request toward the vision of the future of early childhood care and education in Louisiana, building on the work of Act 3 (2012).

In response to the Early Childhood Care and Education Commission's recommendations, the 2018-2019 Louisiana Legislature increased funding in the annual state budget for early childhood education. However, a significant access to quality care remains.

INCREASE IN EARLY CARE ACCESS OVER TEN YEARS



2018-2019 Legislative Session: LA B to 3 Service

\$8.9 million will fund more than 1,400 additional seats for children birth through age 3 currently on the waitlist for Child Care Assistance Program (CCAP).

Through August 2019:

- 2,080 children, birth to 3, have been removed from the waiting list since June 2019, of which approximately 930 children have been authorized for service.
- During the same period, an additional 4,000 families applied to be on the waiting list, with approximately 1,220 children approved and added.

Considerations for Year Two

The Commission [report](#) named four key areas for study in year two, to strengthen early childhood care and education in Louisiana, that will drive meeting activities.

Meeting date	Areas of Focus
August 20, 2019	<u>Public Awareness and Collaboration</u> through stakeholder engagement <u>Affordability and Access</u> through increased efficiency, including shared services
September 19, 2019	<u>Locally-driven decisions</u> through Ready Start Networks <u>Public Awareness and Collaboration</u> toolkit for LA B to 3
October 21, 2019	No whole group meeting.
November 18, 2019	Supporting all families to access <u>quality</u> evidence-based programs Explore <u>quality</u> resources to support families in their homes
January 30, 2020	<i>Review and vote on report appendix</i>

The Ready Start Model

Local Governance

Challenge and Approach

Challenge:

There has been improvement in quality and access statewide, but the access gaps remain large, particularly at the youngest ages.

Approach:

Communities, empowered with increased authority, responsibility, and resources in the form of Ready Start Network Pilots, will drive faster rates of improvement and access expansion through local plans.

What success looks like:

Community networks develop and execute a vision for expanded local access and quality.

Ready Start Legislation

The legislation enables BESE to begin pilots that build on the work of community networks, with regular updates to inform the Commission's recommendations.

Pilots will inform statewide efforts to improve the effectiveness of local publicly funded early childhood care and education programs. Participating networks shall:

- A. Measure the need for affordable access to quality early care and education for children from birth through age four within the community.
- B. Establish a local, collaborative governing structure for shared decision making.
- C. Identify shared resources that can support improved access to and quality of early childhood care and education programs for children from birth through age four, and determine how resources can be leveraged to maximize the impact of such programs for each age year.
- D. Determine how future financial support should be used to expand access to and improve quality of infant, toddler, and prekindergarten classrooms in the local community.

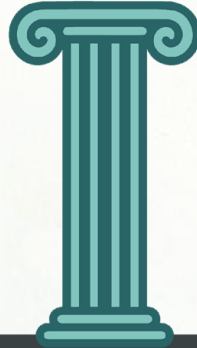
Ready Start Networks

Four Pillars

BLUEPRINT



COALITION



GOVERNANCE



FUNDRAISING



• READY START NETWORK •

Ready Start Networks

Full Model

Each Ready Start must develop a strategic plan that addresses the following four pillars:

Ready Start Blueprint

What are you building?

Establish the plan for your community's early childhood work.

Communicate clearly what will be true for your community if you successfully execute your plan.

Ready Start Coalition

Who do you need to build it?

Identify the necessary participants to achieve your plan.

Consider carefully who needs to be informed, invested, involved, and/or held accountable.

Ready Start Governance

How will you make decisions?

Determine the structures necessary to execute your plan.

Collaborate with your partners to establish how you will share responsibility.

Ready Start Fundraising Strategy

How will you raise funds?

Survey all resources available to support your strategic plan, and determine what else is needed.

Establish a plan to secure additional resources to achieve your vision.

Ready Start Networks

Once Ready Starts are established, they will serve as publicly-recognizable, centralized hubs for their community's early childhood efforts. These efforts may vary, depending on community priorities.

Examples of directions communities may choose to incorporate into their Ready Start blueprint:

- Increasing community-level partnerships to maximize benefits to children and families
- Building coherent links and transitions for children and families across community programs
- Incorporating local and regional health and social services initiatives that impact families of young children into their hub
- Establishing community-wide screening, identification, and support practices and protocols for at-risk and in-need children
- Incentivizing teacher quality and teacher retention across programs
- Connecting and layering community-level initiatives and grants to support and promote early care and education across programs

While this work may look different community to community, it will ultimately build toward increased access to improved quality experiences for young children and families across Louisiana.

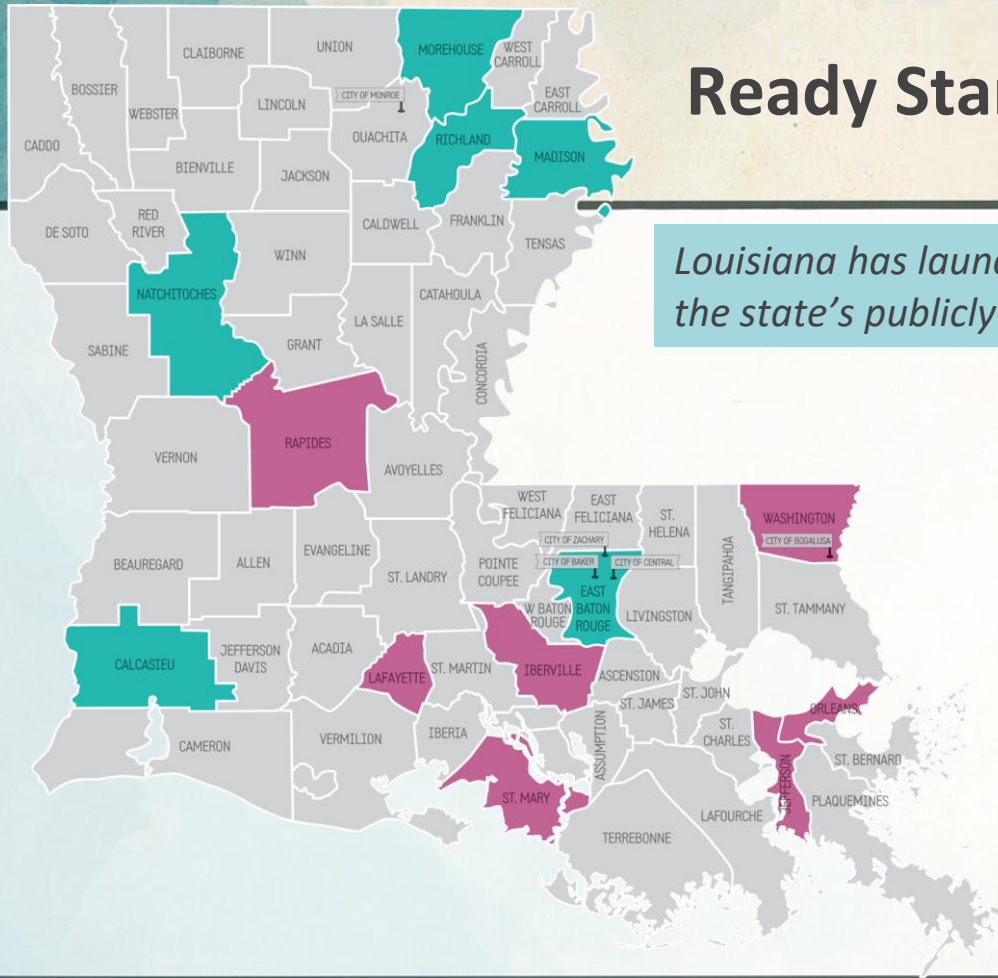
Ready Start Network Cohorts

Louisiana has launched 13 Ready Starts, who serve nearly half of the state's publicly-funded birth through four-year-olds.

READY START NETWORK

● COHORT 1

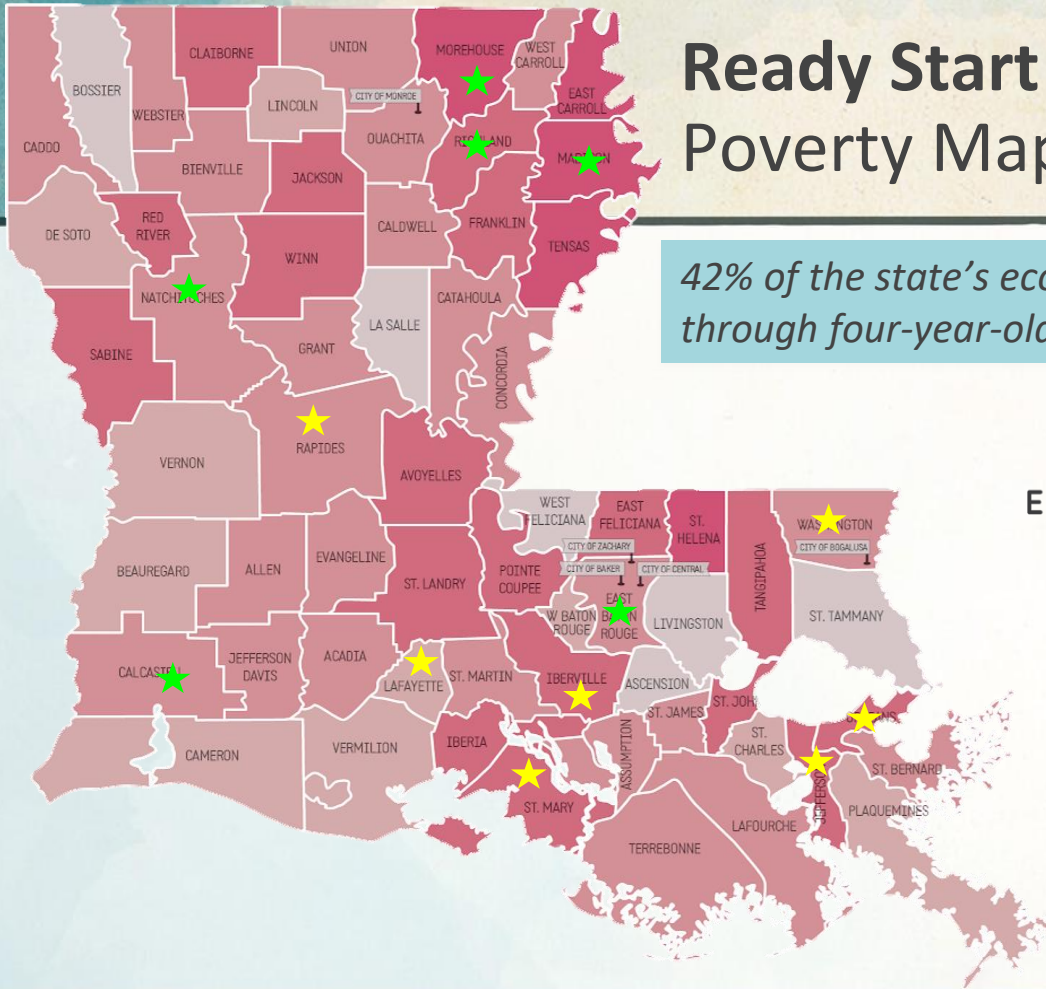
● COHORT 2



Ready Start Networks

Poverty Map of Cohorts 1 and 2

42% of the state's economically disadvantaged (200% FPL) birth through four-year-olds reside in Ready Start Networks.



Ready Start Networks

Cohort 1 Progress

Cohort 1 has been instrumental with shaping the Department's messaging for the Ready Start initiative and ideas for what is possible. They are committed and tenacious partners and a valuable resource.

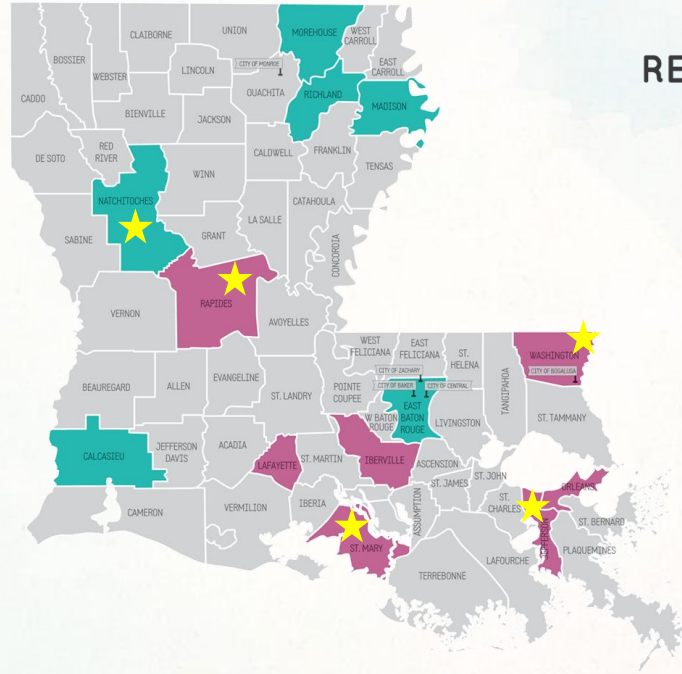
Iberville	Improving quality with a community coaching structure; primarily concerned with supporting child care
Lafayette	Strengthening the community network with a system of support for child care directors
Jefferson	Developing an efficient governance structure to maximize the involvement of community leaders
Orleans	Strengthening an established governance structure and generating data and resources to improve access and quality
Rapides	Improving access and quality in child care by expanding partnerships across the community with a focus on re-branding, a new website, and strategic communication with the community
St. Mary	Improving quality with a collaborative coaching system
Washington	Sharing data, resources, and formalizing partnerships with providers and funders to meet unserved needs



A Ready Start Community Panel

Ready Start Speakers

- *Cindy Rushing, Rapides Parish*
- *Leslie Hodges, Washington Parish*
- *Almetra Franklin, St. Mary Parish*
- *Sarintha Strickland, Jefferson Parish*
- *Tony Davis, BESE board member, Natchitoches Parish*



READY START NETWORK

- COHORT 1
- COHORT 2

Next Steps for Ready Starts

Expanding Ready Starts

Louisiana is working to prepare more communities to take on the Ready Start work, with a goal of at least 25 Ready Start Networks funded by July 1, 2020.

- Communities can [apply](#) to join the “Get Ready” cohort, Applications are due **September 27**.
 - Get Ready cohort will run October-February, and will give communities who are interested in RSN the in-depth support from LDOE and RSNs to learn more and begin developing their application
- Super App, the unified application for LEA funding, launches in November and is due February 7, 2020
 - As part of applying for ECE funding, all communities will be asked for their blueprint for early childhood
- Cohort 3 application will release in February 2020
 - All community networks will be eligible to apply, including those that did not participate in the Get Ready Cohort

Ready Start Blueprints

Ready Start Blueprint

What are you building?

Establish the plan for your community's early childhood work.

Communicate clearly what will be true for your community if you successfully execute your plan.

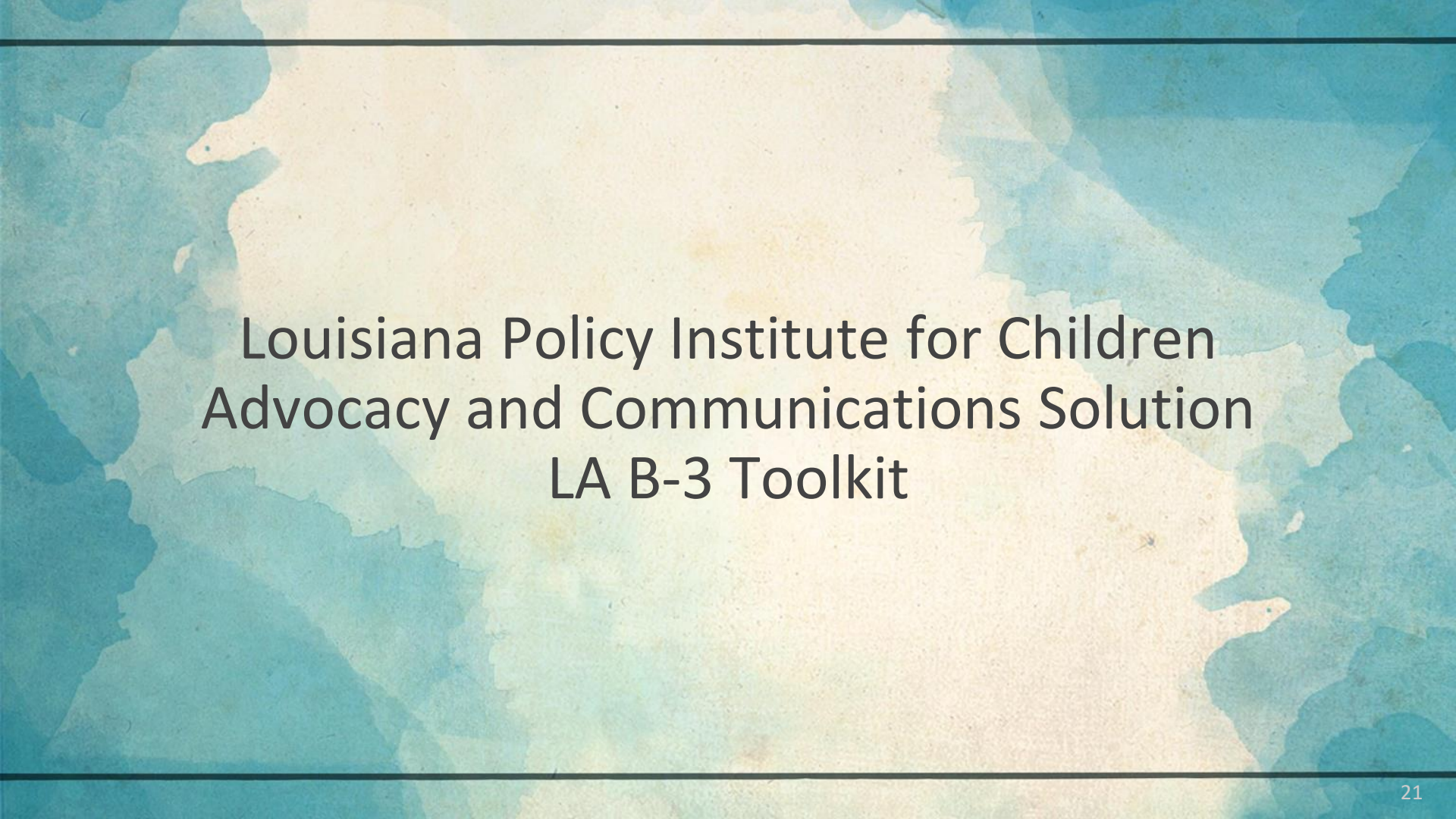
As part of strategy to improve access to quality, Louisiana will support and encourage every community to develop their blueprint and make it publicly available. “Get Ready” cohort will have technical support to develop the plan.

Questions communities will consider as they develop these include:

- What will be true if you are successful?
- What are you doing to improve access to quality for children B-5 in your community?
 - Where do you need new seats, serving which ages?
 - Where do you need to improve currently available seats?
- What challenges are you trying to solve?
- What opportunities are you trying to take advantage of?
- What are your levers to accomplish your goals?

Upcoming Dates

September	Applications for Get Ready Cohort due at noon on Sept. 27
October - January	Get Ready weekly webinars take place
November	Super App released & trainings occur
February	<ul style="list-style-type: none">• Super App due Feb. 7• Official Cohort 3 Ready Start Network application released
March	Cohort 3 RSN applications due



Louisiana Policy Institute for Children Advocacy and Communications Solution LA B-3 Toolkit

LA B-3 Commission Toolkit

Purpose:

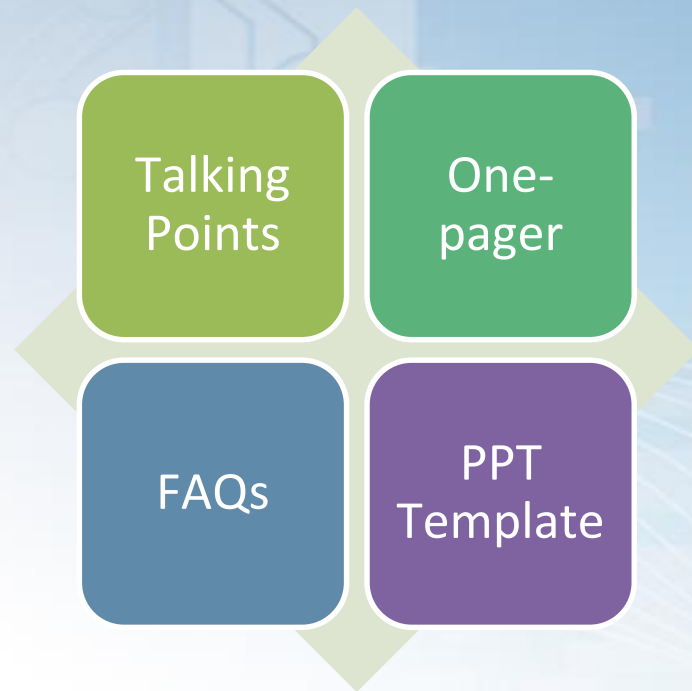
*Materials to make it easy for
Commission members and others to
share information about LA B-3
successes to date, and ongoing work.*

LA B-3 Commission Toolkit

Outcomes:

- *Clear message about the LA B-3 Commission*
- *Increased awareness about LA B-3 and its importance to the state*

LA B-3 Toolkit Contents



FAQ Worksheet

1. When talking about the LA B-3 Commission with your colleagues, your networks, your neighbors, what questions come up most often?
2. What questions about LA B-3 Commission do you find difficult to answer?
3. What questions you haven't been asked yet but are concerned you might get asked?

How to Use the Toolkit

Make a short list of influencers (examples: business, media, higher education, policy makers, faith leader, and elected officials)

- Invite someone to lunch
- Write a LTE to your local paper
- Make one phone call
- Connect on social media
- Discuss the report at a board meeting

Thank you!



Rebecca Cohen, Vice President

Public Comment

Next Steps and Adjournment

Meeting canceled: October 21, 2019

Next meeting: November 18, 2019, 12:00-3:00 pm.