

LOUISIANA DEPARTMENT OF EDUCATION



**Community Network Lead
Agency Office Hours
September 12, 2023**

Agenda

- I. Early Childhood Reminders
- I. Upcoming Events



Early Childhood Reminders

Early Childhood Reminders

Coordinated Observation Protocol

Community Network Lead Agencies should schedule observations for all early childhood classrooms and submit coordinated observation plans by October 1, 2023.

The Department has released the [2023-2024 Local Observation Protocol Guidance](#). This document provides information on:

- minimum requirements of Community Network Lead Agencies for local observations
- considerations for observing Family Child Care providers
- updated observation guidance for the 2023-2024 academic year

Please submit completed protocols to the CNLA FTP folder by **October 1, 2023**.

Reach out to robert.jones4@la.gov with any questions.

Early Childhood Reminders

2023-2024 Fall CLASS® Observation Scheduling

All CLASS® observations must be scheduled for every classroom in all publicly-funded early childhood sites by October 1, 2023.

All classrooms and sites are available for observation scheduling. As a reminder, Bulletin 140 requires that all observations are scheduled in the Early Childhood portal by October 1, 2023.

Sites Codes, EC Portal Access	Bulletin 140 Requirements, CLASS®, Scheduling
Please contact Alicia Franklin at alicia.franklin@la.gov	Please contact Robert Jones at robert.jones4@la.gov

Early Childhood Reminders October Child Count

In preparation for October 1 Child Count, all Community Network Lead Agencies are asked to identify no more than three Primary Network Administrators.

Community Network Lead Agencies should complete the October Child Count Form using this [link](#) no later than September 19, 2023.

- This information will provide access only to the authorized users identified for your network.

Please contact Alicia Franklin at alicia.franklin@la.gov with any questions.

Early Childhood Reminders

ECE Teacher and Leader of the Year Nominations

Nominations for the next Early Childhood Teacher and Leader of the Year Awards opened on Friday, August 11, and close on Friday, September 22, at 11:59 p.m.

The LDOE recognizes the incredible impact of early childhood educators, and the Early Childhood Teacher and Leader of the Year Award is a key component of recognizing the incredible work of these professionals.

Teacher and directors are encouraged to self-nominate or nominate colleagues, friends, or family members who are excellent early childhood educators for the Early Childhood Teacher or Leader of the Year Award!

Nominations should be submitted through the [Nomination Portal](#) and applications released in early October 2023.

Questions should be directed to earlychildhood@la.gov.



Early Childhood Reminders

Early Childhood Education (ECE) Fund Application

*All community network lead agencies were emailed the application for the Early Childhood Education Fund in early July 2023. The application is due on **Saturday, September 30.***

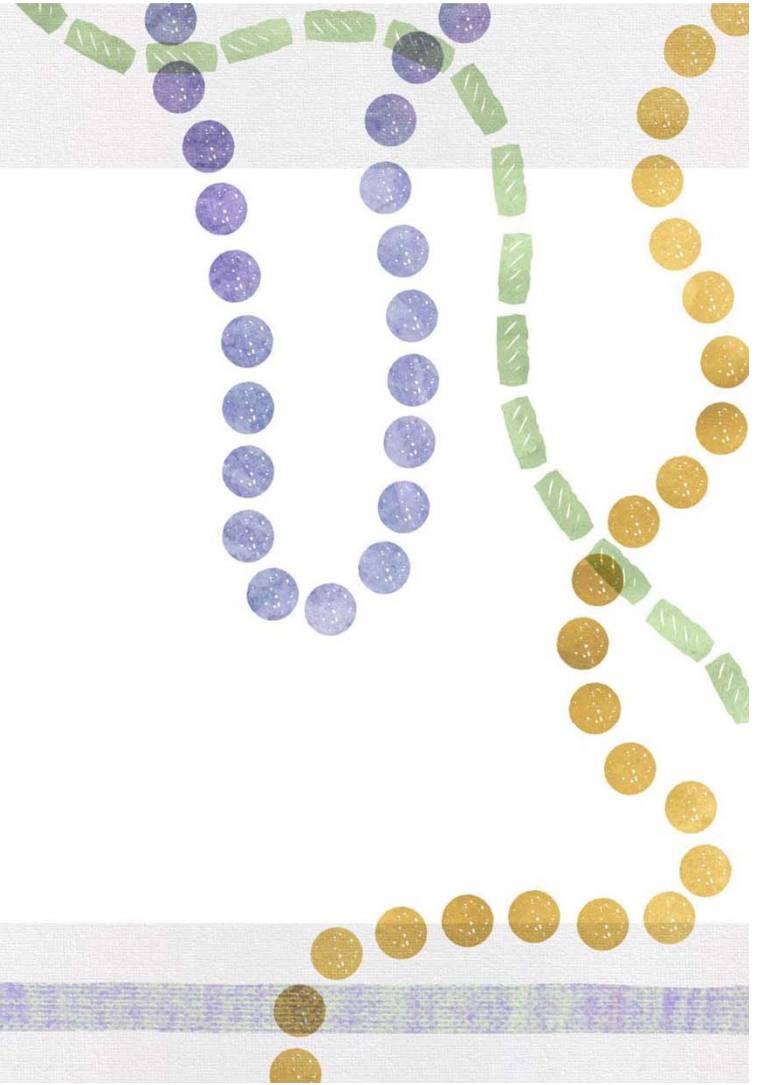
These qualifying local funds may be matched dollar for dollar, up to the entire amount raised locally by the community network. To be eligible for the ECE Fund's state matching dollars community network lead agencies can receive local funds from:

- local municipalities
- city governments
- philanthropic organizations
- businesses
- individual donors

All
Community
Network Lead
Agencies must
submit the
application by
9/30/23

The application is due by 5 p.m. on **Saturday, September 30.** Please submit applications to devon.camarota@la.gov.

Upcoming Events



Upcoming Events

New Director Webinar

CNLAS are encouraged to share the monthly webinar for new directors that focuses on a topic related to early childhood quality while also helping to expand directors' network of peers.

The September New Director webinar topic is "CLASS® Observations: What to Expect"

Webinar Date/Time: September 29, 2023 at 12:00 p.m.

Webinar Link:

<https://ldoe.zoom.us/j/92700204655?>

Phone Number: 1-407-381-2552

Meeting ID: 927 0020 4655

Please contact tella.henderson@la.gov with any questions or for assistance.

Upcoming Events

TS Gold® Webinar Shift

Moving forward, GOLD® update webinars will no longer be separate from CNLA office hours and will be embedded in office hour webinars when timely.

GOLD® updates embedded in CNLA office hours will include:

- checkpoint guidance and reminders
- helpful information and instructions near checkpoint times
- updates and information regarding GOLD®
- other timely guidance and support

CNLA webinars will now include extended office hours for questions regarding GOLD® Fall, Winter, and Spring Checkpoints.

- The GOLD® Fall Checkpoint extended office hours will be held on September 19, 2023 from 3:00 p.m. to 4:00 p.m. **Please plan to be available for CNLA office hours from 3-3:30 p.m. and then for the TS Gold® extension from 3:30-4 p.m.**

Upcoming Events

Provider Update Webinar

CNLAs are encouraged to attend the monthly webinars for early childhood providers. These webinars will include important updates and reminders for all provider types.

Providers can access the next provider webinar using the information below:

Webinar Date/Time: Thursday, October 5, at 1 p.m.
Webinar Link: <https://ldoe.zoom.us/j/93597745872>
Phone Number: 1-312-626-6799
Meeting ID: 935 9774 5872

Upcoming Events Winter Collaboratives

In October 2023, the LDOE will host three opportunities for CNLAs and CCR&Rs to collaborate and improve outcomes for children in 2023-2024.

Each agency should bring no more than four staff members. To determine attendees, please review the recommendations in the table below.

CNLA	CCR&R
<ul style="list-style-type: none">● Community Network Lead Agency Administrator● Education Manager● Specific grant or program manager (i.e. CCAP B-3 Seats)	<ul style="list-style-type: none">● Director● Master Coach(es) <p><i>*Please assign different staff to represent the CNLA and CCR&R if the entity represents both the CNLA and CCR&R</i></p>

Winter Collaboratives

Date and Time	Location	Attendees
October 12 8:30 - 11:30 a.m.	Rapides	CCR&R Attendees: Children's Coalition, NSU, and VOA 567
October 18 8:30 - 11:30 a.m.	Baton Rouge (Claiborne Building)	Agenda, Jefferson, Lafayette-OTB5, Pointe Coupee, VOA 234, VOA 567
October 25 8:30 - 11:30 a.m.	St. Tammany	Agenda and VOA 234

Winter Collaborative

October 12 - Rapides Participants

CCR&R	Ready Start Network or Community Network Lead Agency
Children's Coalition	Caldwell, Catahoula, E. Carroll, Franklin, Lincoln, Madison, Morehouse, Ouachita, Richland, Tensas, Union, W. Carroll
NSU	Bienville, Bossier, Caddo, Catahoula, Claiborne, Concordia, DeSoto, Grant, Jackson, LaSalle, Natchitoches, Rapides, Red River, Sabine, Webster, Winn
VOA 567	Allen, Avoyelles, Beauregard, Cameron, Evangeline, Jefferson Davis, Vernon

Winter Collaborative October 18 - Claiborne Participants

CCR&R	Ready Start Network or Community Network Lead Agency
Agenda	Assumption, Lafourche, Orleans, Terrebonne
Jefferson	Jefferson
Lafayette	Lafayette
Pointe Coupee	Pointe Coupee
VOA 234	Ascension, EBR, E. Feliciana, Iberville, WBR, W. Feliciana, Zachary, Central, Tangipahoa
VOA 567	Acadia, Calcasieu, Iberia, St. Landry, St. Martin, St. Mary, Vermilion

Winter Collaborative

October 25 - St. Tammany Participants

CCR&R	Ready Start Network or Community Network Lead Agency
Agenda	Plaquemines, St. Bernard, St. Charles, St. James, St. John, St. Tammany, Washington
VOA 234	Livingston, St. Helena

Events and Deadlines

September 22: Nominations for Early Childhood Teacher and Leader of the Year close

September 29: New Director Monthly Webinar

September 30: Early Childhood Education Fund Application due to devon.camarota@la.gov for all Community Network Lead Agencies, even if not requesting funds.

October 1: Deadline to submit 2023-2024 Coordinated Observation Plans to the CNLA FTP folder

October 1: Deadline to schedule all Fall 2023 CLASS[®] Observations in the [EC Portal](#)

October 10: Deadline to submit LA 4 and NSECD Attendance for September 2023

October 12: Winter Collaboratives in Rapides

October 18: Winter Collaboratives in Baton Rouge

October 25: Winter Collaboratives in St Tammany



LOUISIANA DEPARTMENT OF EDUCATION

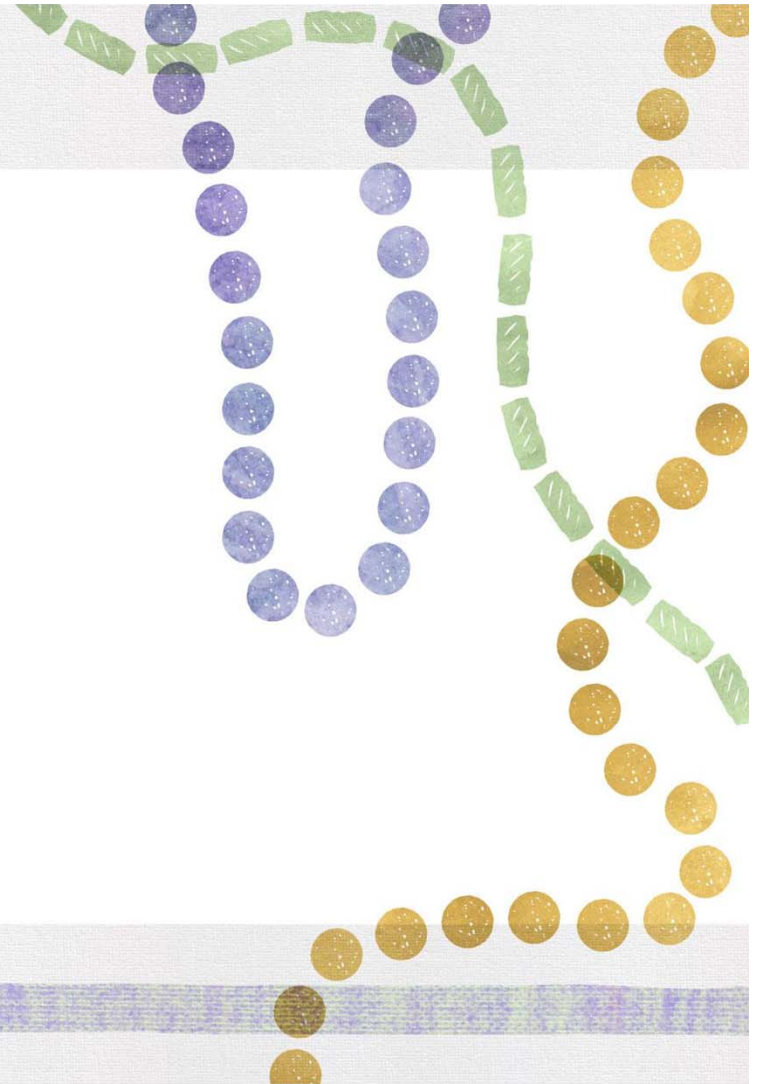


**Community Network Lead
Agency Office Hours
September 19, 2023**

Agenda

- I. October 1 Child Count
- II. Early Childhood Reminders
- III. GOLD[®] Updates
- IV. Upcoming Events

October 1 Child Count



October Child Count

Per Bulletin 140, Community Network Lead Agencies and publicly-funded early learning sites are required to count all publicly-funded children served at each publicly-funded site as of October 1 and submit to the LDOE by October 31.

The Department will capture October 2023 Child Count data utilizing the Child Count Portal.

- Child count is intended to count every publicly-funded child birth through age four in the state.
- Child count is a snapshot of enrollment as of October 1.
- October 1, 2023 child count will reflect enrollment counts captured on October 2, 2023 (since October 1 falls on a Sunday).
- Per Bulletin 140 and CNLA agreements, child count must be submitted by October 31, 2023.
- CNLAs are responsible for ensuring accurate counts are captured and reported at each publicly-funded early learning site within the community network for all publicly-funded children served on October 1.

October Child Count

Per Bulletin 140, Community Network Lead Agencies and publicly-funded early learning sites are required to count all publicly-funded children served at each publicly-funded site as of October 1 and submit to the LDOE by October 31.

CNLAs will work with each publicly-funded early learning site to count and report publicly-funded children enrolled on October 2, 2023 (since October 1 falls on a Sunday).

CNLAs are encouraged to work with sites in maintaining a copy of classroom rosters per site based on publicly-funded children enrolled on October 2, 2023.

- All publicly-funded children should be included in the October 1 Child Count.
- Child Count is intended to be an *unduplicated* count of every publicly-funded child birth through age four at each publicly-funded site. Only count children under one funding source.

October Child Count Age Groups

The age of the child on September 30, 2023, and not the age configuration of the classroom, determines the age group in which the child should be counted.

Age Group	Children born between....	Children who have....
Infants	October 1, 2022 – September 30, 2023	Not reached their first birthday before September 30, 2023
Ones	October 1, 2021 – September 30, 2022	Reached first birthday on or by September 30, 2023
Twos	October 1, 2020 – September 30, 2021	Reached second birthday on or by September 30, 2023
Threes	October 1, 2019 – September 30, 2020	Reached third birthday on or by September 30, 2023
Fours	October 1, 2018 – September 30, 2019	Reached their fourth birthday on or by September 30, 2023

October Child Count

Funding Source & Family Child Care

CNLAs are encouraged to work directly with all providers to ensure children are captured accurately based on the child's age and funding source.

Because children's time in care may be split between program types, CNLAs should determine the *primary* funding source based on where the child spends the majority of the instructional day.

- Full-time children enrolled, and receiving at least 6 consecutive hours of instruction per day and/or 20 hours of instruction per week should be included in child count.
- Family Child Care (FCC) should only be included in child count if the provider is participating in accountability and maintains a certificate of Academic Approval.
- Part-time children enrolled and receiving less than 6 consecutive hours of instruction per day and/or 20 hours of instruction per week are should not be included in child count.
- CNLAs are encouraged to review the [Overview of Early Childhood Sources](#) as a resource.

October Child Count Special Education

Children enrolled in full day publicly-funded (center-, school-, or site-based program) with an IEP or IFSP should be counted under the appropriate category.

SPED Category Within Appropriate Fund Source

- Children receiving funding primarily from a fund source other than IDEA (e.g., Title I, LA 4, CCAP, etc.), should be counted within the SPED category of the appropriate fund source.

“IDEA ONLY” Category

- The “IDEA ONLY” category should include IDEA-funded children receiving special education services that cannot be counted in any other category.
- Only count children whose primary fund source is IDEA for full-time care.
- Do not count children who are part-time or private pay and receive special education services.
- Do not count children receiving special education services in the home (including Early Steps home-based children).

October Child Count

Demographic & Background Information

Demographic and background information are included in the October 2023 Child Count. Providers should do their best to identify background demographic and needs at the time of each child's enrollment.

Demographics by Race

- All children must be counted under one racial demographic category.
- If a family selects more than one race for the child, the child should be counted under the category "two or more races."
- If the racial information was not provided and this information can not be confirmed, the child should be counted under the category "Other or Unknown."

Ethnicity

- Ethnic demographic information mirrors the ethnic demographic information collected in K-12.
- A child is either Hispanic/Latino or Not Hispanic/Latino.

October Child Count

Demographic & Background Information

Background Information

- Children may be counted under as many background demographic categories as applicable:
 - **Homelessness:** Please refer to [Homeless Children in Child Care](#) for additional information;
 - **Dual Language:** A Dual Language Learner is a child with at least one guardian who speaks a language other than English in the home. This can be determined by asking families for details about languages spoken at home.
 - **Foster Care:** Children in Foster Care should be counted under the appropriate category.

October Child Count Data Collection

October Child Count will be collected via the [Child Count Portal](#).

Access to the [Child Count Portal](#) will be provided on October 2, 2023 to the primary network administrator(s) identified via the [CNLA October Child Count Form](#).

- Updates to primary network administrator(s) are due today, September 19, 2023.
- Network administrator(s) will be responsible for collecting, entering, and submitting data to the LDOE no later than October 31, 2023 via the [Child Count Portal](#) by October 31, 2023 at 11:59pm.
- Assurance agreements must be signed prior to data entry.

October Child Count Data Collection

For the 2023-2024 academic year, CNLAs will have the option to involve sites in entering site-level child count data into the [Child Count Portal](#).

CNLAs interested in this option may assign one person per site to enter data for individual sites in the [Child Count Portal](#).

- CNLAs opting to provide site-level access will receive the data immediately and have the option to adjust and correct numbers, or request the site to resubmit the data entered.
- CNLAs are encouraged to work with sites in maintaining a copy of classroom rosters per site based on publicly-funded children enrolled on October 2, 2023.

October Child Count Data Collection

October Child Count data must be submitted via the [Child Count Portal](#) by October 31, 2023 at 11:59pm.

CNLAs may submit data to the LDOE via the [Child Count Portal](#) once counts for all publicly-funded children served at each publicly-funded site as of October 1 are verified.

- The Child Count Portal will replace the Excel-based data collection method utilized by networks when previously submitting child count data to the LDOE.
- Once data entry begins, counts by funding sources will be compared to counts entered by demographic and background totals to ensure subsets don't exceed the total students.
- If totals do not match, submissions will be highlighted in yellow indicating the number reported failed the data checks and must be revised.
- The software will not accept partial data submissions.

Contact Alicia Franklin at alicia.franklin@la.gov for additional support.

October Child Count

Accessing the Child Count Portal - Network-level User

Log into the software site www.ladatareview.net/childcount using your assigned username and password.

Network users will be prompted to complete the Assurance Agreement prior viewing the dashboard.

Refer to the [Child Count User Guide for Network-level Users](#) for additional guidance.

CHILD COUNT PORTAL

Community Network Documentation

2023-24 Louisiana 999 - SAMPLE NETWORK

October Child Count Dashboard

999 - SAMPLE NETWORK

Community Network-level October Child Count Dashboard

Submit October 1 Child Count Numbers to the State

Submit The Child Count numbers for this Network are not ready to be submitted. There are currently 3 sites that have not been properly reviewed.

Dashboard Expanded View

Export to Excel

Community Network / Site	Status	October Child Count Totals		All Background Status and Ethnicity Subsets Pass Varsity Checks
		by Public Funding Source	by Demographic Race	
999 - SAMPLE NETWORK				0
999001 - Sample Elementary School 1				0
999002 - Sample Elementary School 2				0
999AA1 - Sample Head Start Learning Center A				0

Key

- This number passed the data checks
- This number failed the data checks and needs to be reviewed
- The funding source is not eligible for this age level
- Requires Correction
- Assigned to Site - awaiting response/submission
- Ready for Submission
- Submitted

Education Data Collection, Review and Certification Software v3.1 - © 2014-2023 MHCS Consulting, LLC and its Licensees - All Rights Reserved

October Child Count Network-level User - Dashboard

The software will display the dashboard for the network, providing a listing of the sites within the network along with the real-time data entry results and submission status.

Refer to the [Child Count User Guide for Network-level Users](#) for additional guidance.

Sample Network | Home | My Announcements | My Profile | Log Out

CHILD COUNT PORTAL

Community Network Documentation

2023-24 / Louisiana / 999 - SAMPLE NETWORK

October Child Count Dashboard

999 - SAMPLE NETWORK

Community Network-level October Child Count Dashboard

Submit October 1 Child Count Numbers to the State

Submit The Child Count numbers for this Network are not ready to be submitted. There are currently 3 sites that have not been properly reviewed.

Dashboard | Expanded View

Export to Excel

Community Network / Site	Status	October Child Count Totals		All Background Status and Ethnicity Subsets Pass Validity Checks
		by Public Funding Source	by Demographic Race	
999 - SAMPLE NETWORK		83	83	Yes
999001 - Sample Elementary School 1		83	83	Yes
999002 - Sample Elementary School 2		0	0	
999AA1 - Sample Head Start Learning Center A		0	0	

Key

- This number passed the data checks
- This number failed the data checks and needs to be reviewed
- The funding source is not eligible for this age level
- ⊘ Requires Correction
- ⊘ Assigned to Site - awaiting response/submission
- ✓ Ready for Submission
- ➡ Submitted

Educational Data Collection, Review and Certification Software v3.1 - © 2014-2023 HMCS Consulting, LLC and its Licensors - All Rights Reserved

October Child Count Network-level Access

Network users have the option to enter data for all sites, specific sites, or assign data entry to individual sites.

Utilizing the “Site-level Users” menu item, the network can maintain a listing of site-level users to perform data entry with the action icons shown below.

Refer to the [Child Count User Guide for Network-level Users](#) for additional guidance.

Sample Network | Home | My Announcements | My Profile | Log Out

CHILD COUNT PORTAL

Community Network Documentation

2023-24 / Louisiana / 999 - SAMPLE NETWORK

October Child Count Dashboard

999 - SAMPLE NETWORK

Community Network-level October Child Count Dashboard

Submit October 1 Child Count Numbers to the State

Submit The Child Count numbers for this Network are not ready to be submitted. There are currently 3 sites that have not been properly reviewed.

Dashboard | Expanded View

Export to Excel

Community Network / Site	Status	October Child Count Totals		All Background Status and Ethnicity Subsets Pass Validity Checks
		by Public Funding Source	by Demographic Race	
999 - SAMPLE NETWORK		33	33	Yes
999001 - Sample Elementary School 1		0	0	Yes
999002 - Sample Elementary School 2		0	0	
999AA1 - Sample Head Start Learning Center A		0	0	

Key

- This number passed the data checks
- This number failed the data checks and needs to be reviewed
- The funding source is not eligible for this age level
- ! Requires Correction
- ⊙ Assigned to Site - awaiting response/submission
- ✓ Ready for Submission
- ↻ Submitted

Educational Data Collection, Review and Certification Software v3.1 - © 2014-2023 MMC Consulting, LLC and its Licensors - All Rights Reserved

October Child Count

Site-level User - Dashboard

Site-level user will log into the data entry portal using the provided link along with the username (user's email address) and system-generated password.

The data entry portal will display the dashboard for the site, providing a listing of the early childhood ages from infants through 4-year-olds.

Refer to the [Child Count User Guide for Site-level Users](#) for additional guidance.

Sample Network | Home | My Announcements | My Profile | Log Out

CHILD COUNT PORTAL

Community Network Documentation

2023-24 / Louisiana / 999 - SAMPLE NETWORK

October Child Count Dashboard

999 - SAMPLE NETWORK

Site-level October Child Count Dashboard

Click on the the age level row to view/edit details. Dashboard | Expanded View

[Export to Excel](#)

Community Network / Site / Age level	Status	October Child Count Totals		All Background Status and Ethnicity Subsets Pass Validity Checks
		by Public Funding Source	by Demographic Race	
999 - SAMPLE NETWORK		0	0	Yes
999002 - Sample Elementary School 2		0	0	
Infants		0	0	
One-Year-Olds		0	0	
Two-Year-Olds		0	0	
Three-Year-Olds		0	0	
Four-Year-Olds		0	0	

Key

- This number passed the data checks
- This number failed the data checks and needs to be reviewed
- The funding source is not eligible for this age level
- ⊘ Requires Correction
- ⊘ Assigned to Site - awaiting response/submission
- ✓ Ready for Submission
- ✓ Submitted

Educational Data Collection, Review and Certification Software v3.1 - © 2014-2023 HRCB Consulting, LLC and its licensors - All Rights Reserved

October Child Count

Network or Site-level Data Entry

Clicking on each row (age-level) will open a window to allow the user to enter the October 1 child counts for each appropriate funding source, demographics by race and counts by ethnicity and background.

Once the required counts have been entered, the user will save the results.

Refer to the [Child Count User Guide for Network-level Users](#) or [Child Count User Guide for Site-level Users](#) for additional guidance.

999002 - Sample Elementary School 2 - One-Year-Olds

October Child Count

Site & Age level

Community Network: SAMPLE NETWORK Age level: One-Year-Olds

Site: 999002 - Sample Elementary School 2

Child Counts by Funding Source

	General	SPED	Total
CCAP:	<input type="text" value="0"/>	<input type="text" value="0"/>	<input type="text" value="0"/>
CCAP B-3:	<input type="text" value="0"/>	<input type="text" value="0"/>	<input type="text" value="0"/>
ECE-Local:	<input type="text" value="0"/>	<input type="text" value="0"/>	<input type="text" value="0"/>
ECE-State:	<input type="text" value="0"/>	<input type="text" value="0"/>	<input type="text" value="0"/>
EHS:	<input type="text" value="0"/>	<input type="text" value="0"/>	<input type="text" value="0"/>
Local:	<input type="text" value="0"/>	<input type="text" value="0"/>	<input type="text" value="0"/>
PDG B-3:	<input type="text" value="0"/>	<input type="text" value="0"/>	<input type="text" value="0"/>
Private:	<input type="text" value="0"/>	<input type="text" value="0"/>	<input type="text" value="0"/>
Private Pay:	<input type="text" value="0"/>	<input type="text" value="0"/>	<input type="text" value="0"/>
RST:	<input type="text" value="0"/>	<input type="text" value="0"/>	<input type="text" value="0"/>
Title I:	<input type="text" value="0"/>	<input type="text" value="0"/>	<input type="text" value="0"/>
TOTAL:	<input type="text" value="0"/>	<input type="text" value="0"/>	<input type="text" value="0"/>

Demographics by Race - only count students once

American Indian or Alaska Native:	<input type="text" value="0"/>
Asian:	<input type="text" value="0"/>
Black or African American:	<input type="text" value="0"/>
Native Hawaiian or Pacific Islander:	<input type="text" value="0"/>
White:	<input type="text" value="0"/>
Two Or More:	<input type="text" value="0"/>
Other or Unknown:	<input type="text" value="0"/>
TOTAL:	<input type="text" value="0"/>

Ethnicity Subsets

Hispanic/Latino:	<input type="text" value="0"/>
------------------	--------------------------------

Background Status Subsets

Homeless:	<input type="text" value="0"/>
Foster:	<input type="text" value="0"/>
Dual Language Learner:	<input type="text" value="0"/>

Save Close

October Child Count Network or Site-level Data Entry

The software will ensure that there are no mismatched totals. If the total count by funding source does not equal the demographic total by race, or the numbers in various background status subsets are greater than total counts by either funding source or demographics, the system will display appropriate error messages for the user and the relevant fields will be highlighted.

Refer to the [Child Count User Guide for Network-level Users](#) or [Child Count User Guide for Site-level Users](#) for additional guidance.

- Site & Age level

Community Network: SAMPLE NETWORK Age level: Infants
 Site: 999001 - Sample Elementary School 1

- Child Counts by Funding Source

	General	SPED	Total
CCAP:	25	5	30
CCAP B-3:	5	0	5
ECE-Local:	10	0	10
ECE-State:	5	0	5
EHS:	3	0	3
Local:	0	0	0
PDG B-3:	5	0	5
Private:	0	3	3
Private Pay:	8	0	8
RST:	0	0	0
Title I:	16	0	16
TOTAL:	77	8	85

Must Match Demographic Total by Race

- Demographics by Race - only count students once

American Indian or Alaska Native:	3
Asian:	4
Black or African American:	15
Native Hawaiian or Pacific Islander:	0
White:	20
Two Or More:	0
Other or Unknown:	0
TOTAL:	42

Must Match Total by Funding Source

- Ethnicity Subsets

Hispanic/Latino:	0
------------------	---

- Background Status Subsets

Homeless:	6
Foster:	2
Dual Language Learner:	5

Save Close

October Child Count Network or Site-level Data Entry

Once all sites have submitted their data and/or data entry have been completed by the network, the will be displayed for all sites and the “Submit” button will be enabled.

This will allow the network to submit the October 1 child counts for all its sites to the LDOE.

Refer to the [Child Count User Guide for Network-level Users](#) or [Child Count User Guide for Site-level Users](#) for additional guidance.

Site & Age level

Community Network: SAMPLE NETWORK Age level: Infants
Site: 999001 - Sample Elementary School 1

Child Counts by Funding Source			Demographics by Race - only count students once	
	General	SPED	Total	
CCAP:	25	5	30	American Indian or Alaska Native: 3
CCAP B-3:	5	0	5	Asian: 9
ECE-Local:	10	0	10	Black or African American: 25
ECE-State:	5	0	5	Native Hawaiian or Pacific Islander: 0
EHS:	3	0	3	White: 35
Local:	0	0	0	Two Or More: 8
POG B-3:	5	0	5	
Private:	0	0	0	
Private Pay:	8	0	8	
RST:	0	0	0	
Title I:	16	0	16	Hispanic/Latino: 5
TOTAL:	77	8	85	

Background Status Subsets

Homeless:	6
Foster:	2
Dual Language Learner:	5

Save Close

Saved Successfully. OK

October Child Count Reminders



September 19: Primary Network Administrator(s) [identified](#)

October 2: Child Count Portal Opens

October 2: October 1 snapshot day

October 31: Portal Closes at 11:59 p.m.

- October 1 Child Count is a snapshot of enrollment counts on October 1 captured on October 2, 2023.
- Child age is based on the age of the child on September 30, 2023.
- Only count children under one funding source.
- Demographic and background counts should align with counts entered for funding sources.

Contact Alicia Franklin at alicia.franklin@la.gov for additional support.

A decorative graphic on the left side of the slide. It features a vertical arrangement of colorful beads: a top section of yellow beads, a middle section of green beads, and a bottom section of blue beads. The beads are arranged in a way that suggests they are part of a larger structure, possibly a necklace or a decorative element. The background is a light gray with a subtle texture. There are also horizontal bands of color: a light blue band at the top, a light purple band in the middle, and a light green band at the bottom.

Early Childhood Reminders

Early Childhood Teacher and Leader of the Year Nominations

Nominations for the next Early Childhood Teacher and Leader of the Year Awards opened on Friday, August 11, and close on Friday, September 22, at 11:59 p.m.

The LDOE recognizes the incredible impact of early childhood educators, and the Early Childhood Teacher and Leader of the Year Award is a key component of recognizing the incredible work of these professionals.

Teacher and directors are encouraged to self-nominate or nominate colleagues, friends, or family members who are excellent early childhood educators for the Early Childhood Teacher or Leader of the Year Award!

Nominations should be submitted through the [Nomination Portal](#) and applications released in early October 2023.

Questions should be directed to earlychildhood@la.gov.



Early Childhood Reminders

Early Childhood Education (ECE) Fund Application

*All community network lead agencies were emailed the application for the Early Childhood Education Fund in early July 2023. The application is due on **Saturday, September 30.***

These qualifying local funds may be matched dollar for dollar, up to the entire amount raised locally by the community network. To be eligible for the ECE Fund's state matching dollars community network lead agencies can receive local funds from:

- local municipalities
- city governments
- philanthropic organizations
- businesses
- individual donors

All
Community
Network Lead
Agencies must
submit the
application by
9/30/23

The application is due by 5 p.m. on **Saturday, September 30.** Please submit applications to devon.camarota@la.gov.

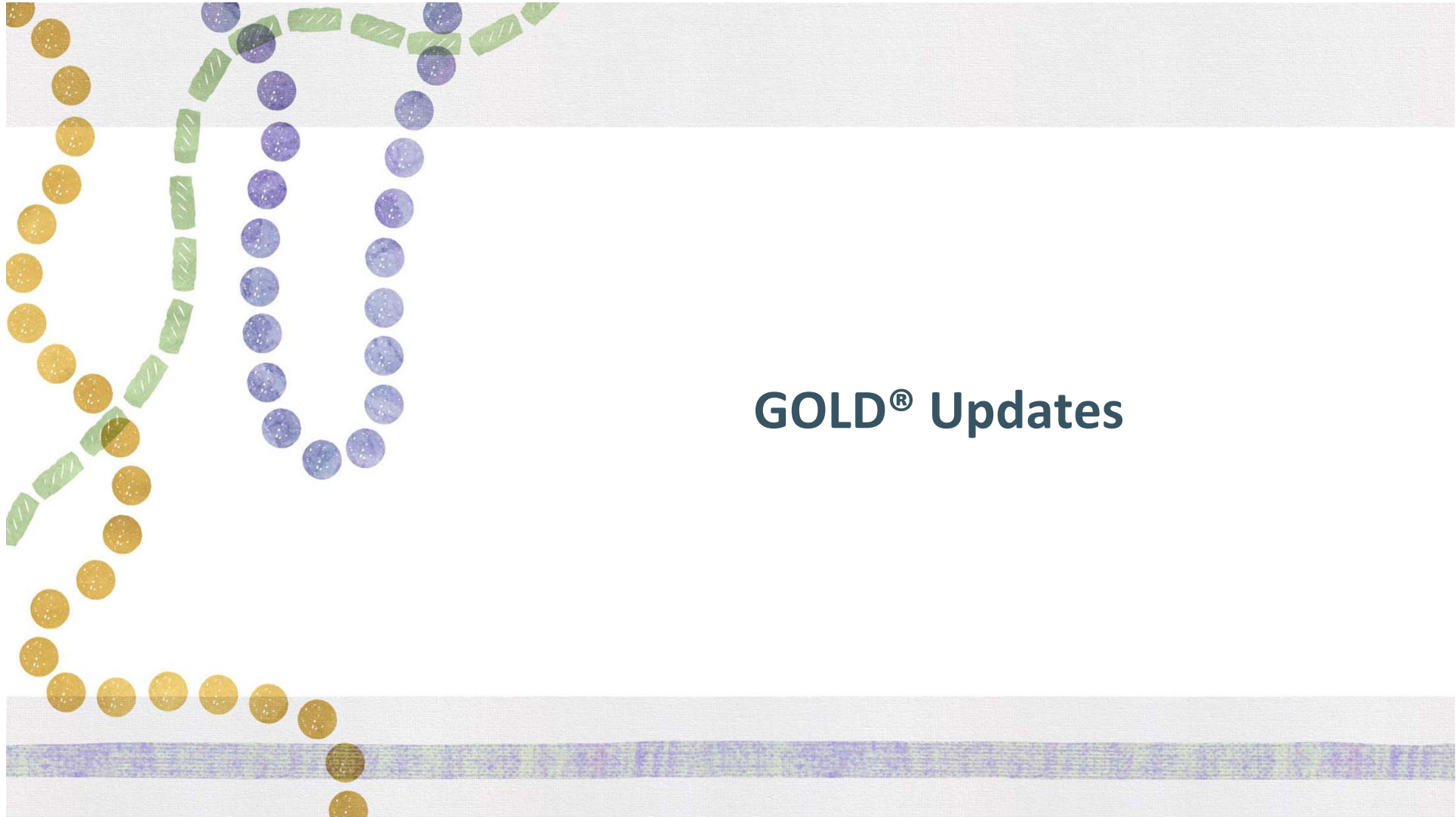
Early Childhood Reminders

School Readiness Tax Credits

CNLAs should be aware of School Readiness Tax credits updates for Type III directors, teachers, parents, and FCC educators in the coming months.

- The Department will send email notifications of star ratings and levels to eligible Type III directors and FCC educators by mid-October 2023.
- Eligible Type III directors/staff and FCC educator member tax forms will be mailed by January 2024, from Louisiana Pathways.
 - For re-leveling with Louisiana Pathways Career ladders, new credentials and certifications should be submitted before **December 31, 2023**, to [Louisiana Pathways](#).
 - Directors and Teachers with an expiring Early Childhood Ancillary Certificate must renew it nine weeks before expiration via the [LDOE's Educator Certification Portal](#).
- Parent School Readiness Tax Credit forms will be mailed to Type III and FCC sites by December 2023.

Questions about School Readiness Tax Credits can be directed to demita.walker@la.gov.



GOLD® Updates

GOLD[®] Updates

TS GOLD[®] Checkpoint Completion

The Department has set program expectations of completion for each checkpoint. Networks should monitor completion rates at the site and classroom levels.

This assessment is mandated through program assurances and included within Bulletin 140.

Sites ensure all required information for classrooms containing children from birth to five years is entered in the GOLD[®] online system. Additionally, all child assessment results for publicly-funded infants, toddlers, and pre-K children must be entered and checkpoints finalized by October 31, February 28, and May 31.

Fall 2023 (October 31)	Winter 2024 (February 28)	Spring 2024 (May 31)
80%	85%	90%

GOLD[®] Updates

TS GOLD[®] Checkpoint Monitoring

Program administrators should monitor sites, classrooms, and users to ensure checkpoint completion.

Every month, program administrators should:

- verify sites are current and listed under your program (this includes Head Start Centers);
- ensure proper naming conventions for sites including FCCs, users, and classrooms;
- review documentation status to identify sites and/or classrooms with minimal to zero documents;
- OSEP administrators are encouraged to cross-check SER for children with new IEPs to ensure data for all children is accurately reported; and
- establish guidelines for site administrators when monitoring their respective site(s), users, and classrooms.

GOLD[®] Updates

TS GOLD[®] OSEP Checkpoint Monitoring

Program OSEP administrators should monitor sites, classrooms, and users to ensure checkpoint completion.

For Fall 2023 Checkpoint OSEP Administrators should:

- ensure all children have an entry date reported;
- ensure all current students that have an IEP are marked “yes” as having an IEP. OSEP administrators are encouraged to cross-check SER each month for children with new IEPs to ensure data for all children is accurately reported;
- ensure all children with an IEP have the 4 extra objectives. These objectives include 1c1, 1c2, 1c3, and 1c4. When the child’s profile is marked “yes” for IEP, the system adds these objectives to the child’s report and they are mandatory for OSEP reporting purposes. These objectives cannot be finalized unless they are leveled;

GOLD[®] Updates

TS GOLD[®] OSEP Checkpoint Monitoring

Program OSEP administrators should monitor sites, classrooms, and users to ensure checkpoint completion.

For Fall 2023 Checkpoint OSEP Administrators should:

- children with an IEP cannot be marked with “Not Observed.” “Not Observed” is a null value. These children need to be marked as “Not Yet” or leveled accordingly; and
- by the end of the Spring checkpoint, all children with an IEP that are being reported to OSEP will have to have at least two completed checkpoints or they will not be in your OSEP report. I will reach out again during the Spring to ensure that all of these children have been finalized with two checkpoints.

GOLD[®] Updates

Helpful Resources for GOLD[®] Checkpoint Completion

TeachingStrategies[®] has many helpful resources and reports to help GOLD[®] Administrators monitor progress towards checkpoint completion.

GOLD[®] Administrators should utilize the following reports and resources to assist in completing checkpoints:

- [The Assessment Status Report](#): this report can be used by teachers and administrators to monitor checkpoint completion rates
- [The Snapshot \(Birth through 3rd Grade\) Report](#): administrators can generate this report to track children's progress towards meeting widely held expectations
- [The Checkpoints Guide](#): this resource details the step by step process teachers should follow to finalize their checkpoints
- [Best Practices in Selecting and Finalizing Checkpoints](#): this resource shares tips to assist teachers with finalizing checkpoints efficiently and effectively

GOLD[®] Updates

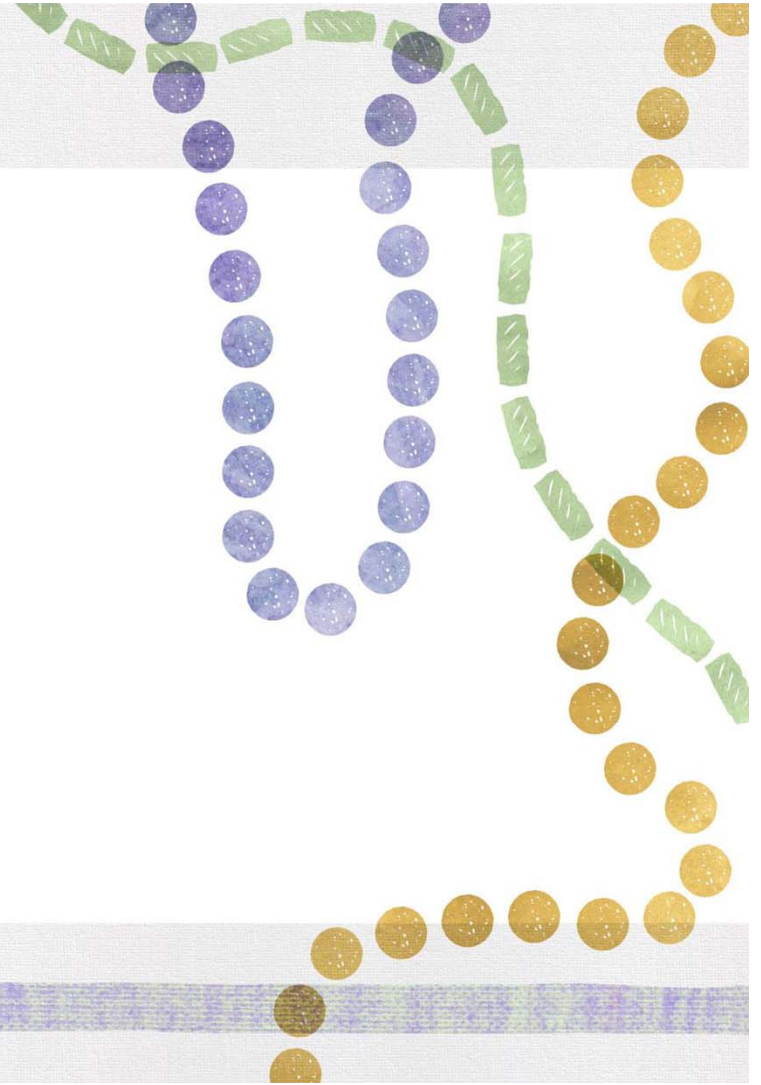
GOLD[®] Administrator Assurances

In an effort to ensure a higher level of data hygiene, all Early Childhood and OSEP Administrators must complete one of the Back-to-School Support webinars for Administrators.

Upon completion of one of the webinars below, please fill out the following [2023-2024 GOLD Administrator Assurances](#) and provide the name of the administrators for your network. Administrative access will not be granted until these assurances have been submitted.

- Back-to-School Support for New Administrators ([Register](#))
- Back-to-School Support for Returning Administrators ([Register](#))

Upcoming Events



Upcoming Events

New Director Webinar

CNLAS are encouraged to share the monthly webinar for new directors that focuses on a topic related to early childhood quality while also helping to expand directors' network of peers.

The September New Director webinar topic is "CLASS® Observations: What to Expect"

Webinar Date/Time: September 29, 2023 at 12:00 p.m.

Webinar Link:

<https://ldoe.zoom.us/j/92700204655?>

Phone Number: 1-407-381-2552

Meeting ID: 927 0020 4655

Please contact tella.henderson@la.gov with any questions or for assistance.

Upcoming Events

Provider Update Webinar

CNLAs are encouraged to attend the monthly webinars for early childhood providers. These webinars will include important updates and reminders for all provider types.

Providers can access the next provider webinar using the information below:

Webinar Date/Time: Thursday, October 5, at 1 p.m.
Webinar Link: <https://ldoe.zoom.us/j/93597745872>
Phone Number: 1-312-626-6799
Meeting ID: 935 9774 5872

Upcoming Events

Winter Collaboratives

In October 2023, the LDOE will host three opportunities for CNLAs and CCR&Rs to collaborate and improve outcomes for children in 2023-2024.

Each agency should bring no more than four staff members. To determine attendees, please review the recommendations in the table below.

CNLA	CCR&R
<ul style="list-style-type: none">● Community Network Lead Agency Administrator● Education Manager● Specific grant or program manager (i.e. CCAP B-3 Seats)	<ul style="list-style-type: none">● Director● Master Coach(es) <p><i>*Please assign different staff to represent the CNLA and CCR&R if the entity represents both the CNLA and CCR&R</i></p>

Winter Collaboratives

Date and Time	Location	Attendees
October 12 8:30 - 11:30 a.m.	Rapides	CCR&R Attendees: Children's Coalition, NSU, and VOA 567
October 18 8:30 - 11:30 a.m.	Baton Rouge (Claiborne Building)	Agenda, Jefferson, Lafayette-OTB5, Pointe Coupee, VOA 234, VOA 567
October 25 8:30 - 11:30 a.m.	St. Tammany	Agenda and VOA 234

Winter Collaborative October 12 - Rapides Participants

CCR&R	Ready Start Network or Community Network Lead Agency
Children's Coalition	Caldwell, Catahoula, E. Carroll, Franklin, Lincoln, Madison, Morehouse, Ouachita, Richland, Tensas, Union, W. Carroll
NSU	Bienville, Bossier, Caddo, Catahoula, Claiborne, Concordia, DeSoto, Grant, Jackson, LaSalle, Natchitoches, Rapides, Red River, Sabine, Webster, Winn
VOA 567	Allen, Avoyelles, Beauregard, Cameron, Evangeline, Jefferson Davis, Vernon

Winter Collaborative October 18 - Claiborne Participants

CCR&R	Ready Start Network or Community Network Lead Agency
Agenda	Assumption, Lafourche, Orleans, Terrebonne
Jefferson	Jefferson
Lafayette	Lafayette
Pointe Coupee	Pointe Coupee
VOA 234	Ascension, EBR, E. Feliciana, Iberville, WBR, W. Feliciana, Zachary, Central, Tangipahoa
VOA 567	Acadia, Calcasieu, Iberia, St. Landry, St. Martin, St. Mary, Vermilion

Events and Deadlines



September 22: Nominations for Early Childhood Teacher and Leader of the Year close

September 29: New Director Monthly Webinar

September 30: Early Childhood Education Fund Application due to devon.camarota@la.gov for all Community Network Lead Agencies, even if not requesting funds.

October 1: Deadline to submit 2023-2024 Coordinated Observation Plans to the CNLA FTP folder

October 1: Deadline to schedule all Fall 2023 CLASS[®] Observations in the [EC Portal](#)

October 10: Deadline to submit LA 4 and NSECD Attendance for September 2023

October 12: Winter Collaboratives at Rapides

October 18: Winter Collaboratives at Claiborne

October 25: Winter Collaboratives at St Tammany

LOUISIANA DEPARTMENT OF EDUCATION



**Community Network Lead
Agency Office Hours
September 26, 2023**

Agenda

- I. Early Childhood Reminders
- II. Upcoming Events



Early Childhood Reminders

Early Childhood Teacher and Leader of the Year Applications

The LDOE thanks all stakeholders for supporting the excellent educators awards program by nominating candidates for their respective awards.

The LDOE recognizes the incredible impact of early childhood educators, and the Early Childhood Teacher and Leader of the Year Award is a key component of recognizing the incredible work of these professionals.

The applications will be sent to all nominated candidates, and available to any additional interested candidates on the [Louisiana Believes Awards](#) page by October 11. Applications will be due January 11, 2024.

Questions should be directed to earlychildhood@la.gov.



Early Childhood Reminders

Early Childhood Education (ECE) Fund Application

*All community network lead agencies were emailed the application for the Early Childhood Education Fund in early July 2023. The application is due on **Saturday, September 30.***

These qualifying local funds may be matched dollar for dollar, up to the entire amount raised locally by the community network. To be eligible for the ECE Fund's state matching dollars community network lead agencies can receive local funds from:

- local municipalities
- city governments
- philanthropic organizations
- businesses
- individual donors

All
Community
Network Lead
Agencies must
submit the
application by
9/30/23

The application is due by 5 p.m. on **Saturday, September 30.** Please submit applications to devon.camarota@la.gov.

Early Childhood Reminders

Coordinated Observation Protocol

Community Network Lead Agencies should schedule observations for all early childhood classrooms and submit coordinated observation plans by October 1, 2023.

The Department has released the [2023-2024 Local Observation Protocol Guidance](#). This document provides information on:

- minimum requirements of Community Network Lead Agencies for local observations
- considerations for observing Family Child Care providers
- updated observation guidance for the 2023-2024 academic year

Please submit completed protocols to the CNLA FTP folder by **October 1, 2023**.

Reach out to robert.jones4@la.gov with any questions.

Early Childhood Reminders

2023-2024 Fall CLASS[®] Observation Scheduling

All CLASS[®] observations must be scheduled for every classroom in all publicly-funded early childhood sites by October 1, 2023.

All classrooms and sites are available for observation scheduling. As a reminder, Bulletin 140 requires that all observations are scheduled in the Early Childhood portal by October 1, 2023.

Sites Codes, EC Portal Access	Bulletin 140 Requirements, CLASS [®] , Scheduling
Please contact Alicia Franklin at alicia.franklin@la.gov	Please contact Robert Jones at robert.jones4@la.gov

Early Childhood Reminders

October Child Count - Data Collection

October Child Count will be collected via the [Child Count Portal](#).

Access to the [Child Count Portal](#) will be provided on October 2, 2023 to the primary network administrator(s) identified via the [CNLA October Child Count Form](#).

- Network administrator(s) will be responsible for collecting, entering, and submitting data to the LDOE no later than October 31, 2023 via the [Child Count Portal](#) by October 31, 2023 at 11:59pm.
- Assurance agreements must be signed prior to data entry.
- CNLAs are encouraged to work directly with all providers to ensure children are captured accurately based on the child's age and funding source.

Early Childhood Reminders

October Child Count - Age Groups

The age of the child on September 30, 2023, and not the age configuration of the classroom, determines the age group in which the child should be counted.

Age Group	Children born between....	Children who have....
Infants	October 1, 2022 – September 30, 2023	Not reached their first birthday before September 30, 2023
Ones	October 1, 2021 – September 30, 2022	Reached first birthday on or by September 30, 2023
Twos	October 1, 2020 – September 30, 2021	Reached second birthday on or by September 30, 2023
Threes	October 1, 2019 – September 30, 2020	Reached third birthday on or by September 30, 2023
Fours	October 1, 2018 – September 30, 2019	Reached fourth birthday on or by September 30, 2023

Early Childhood Reminders

October Child Count - 2023-2024 Funding Sources

Overview of Early Childhood Funding Sources	Infants	Ones	Twos	Threes	Fours
Cecil J. Picard Early Childhood Program (LA 4)					X
Nonpublic School Early Childhood Development (NSECD) Program				X	X
CCAP Birth through Three-Year-Old Seats (B-3)	X	X	X	X	
PDG Birth through Three-Year-Old Seats (B-3)	X	X	X	X	
Child Care Assistance Program (CCAP)	X	X	X	X	X
8(g) Louisiana Quality Education Support Fund					X
Title I				X	X
Individuals with Disabilities Act (IDEA Part B 619)				X	X
Early Head Start (federal-direct)	X	X	X		
Head Start (federal-direct)				X	X
Rural Education Achievement Program (REAP)					X
Education Excellence Fund (EEF)				X	X
Local Taxes (local-direct)	X	X	X	X	X
Private Funds (local-direct/private)	X	X	X	X	X
Early Childhood Education Fund - Local (ECE-Local)	X	X	X	X	
Early Childhood Education Fund - State Match (ECE-State)	X	X	X	X	
Ready Start Transform (RST)	X	X	X	X	
Private (local-direct/private pay)	X	X	X	X	X

Early Childhood Reminders

October Child Count - Data Collection

For the 2023-2024 academic year, CNLAs will have the option to involve sites in entering site-level child count data into the [Child Count Portal](#).

CNLAs interested in this option may assign one person per site to enter data for individual sites in the [Child Count Portal](#).

- CNLAs opting to provide site-level access will receive the data immediately and have the option to adjust and correct numbers, or request the site to resubmit the data entered.
- To assist in verifying student data, it is recommended sites maintain a copy of classroom rosters based on October 1 enrollment (captured on October 2, 2023).

Early Childhood Reminders

October Child Count - Data Collection

October Child Count data must be submitted via the [Child Count Portal](#) by October 31, 2023 at 11:59pm.

CNLAs may submit data to the LDOE via the [Child Count Portal](#) once counts for all publicly-funded children served at each publicly-funded site as of October 1 are verified.

- Once data entry begins, counts by funding sources will be compared to counts entered by demographic and background totals to ensure subsets don't exceed the total students.
- If totals do not match, submissions will be highlighted in yellow indicating the number reported failed the data checks and must be revised.
- The software will not accept partial data submissions.

Contact Alicia Franklin at alicia.franklin@la.gov for additional support.

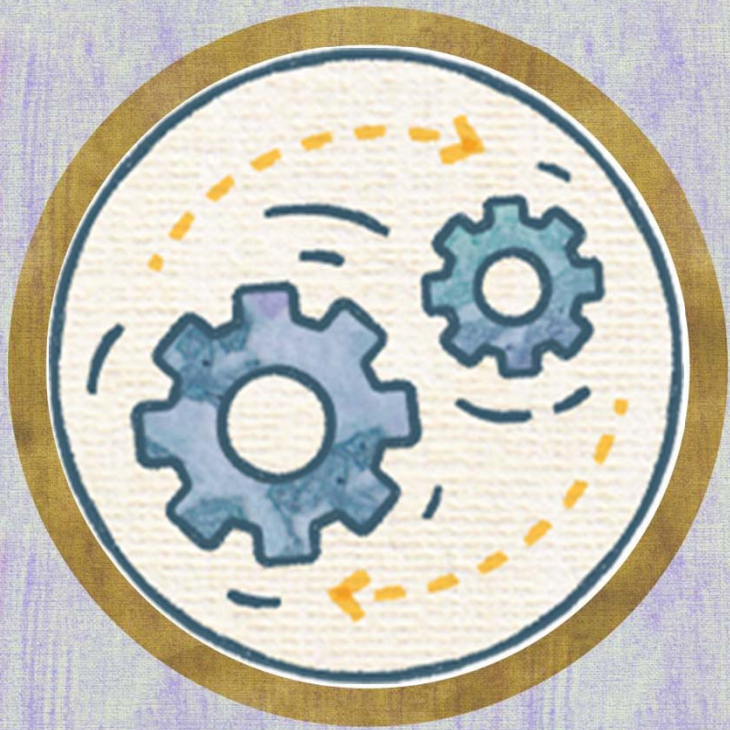
October Child Count Reminders & Next Steps

October 2: Child Count Portal Opens

October 2: October 1 snapshot day

October 31: Portal Closes at 11:59 p.m.

- October 1 Child Count is a snapshot of enrollment counts on October 1 captured on October 2, 2023.
- Child age is based on the age of the child on September 30, 2023.
- Only count children under one funding source.
- Demographic and background counts should align with counts entered for funding sources.



TS GOLD® Checkpoint Completion

The Department has set program expectations of completion for each checkpoint. Networks should monitor completion rates at the site and classroom levels.

This assessment is mandated through program assurances and included within Bulletin 140:

Sites ensure all required information for classrooms containing children from birth to five years is entered in the GOLD® online system. Additionally, all child assessment results for publicly-funded infants, toddlers, and pre-K children must be entered and checkpoints finalized by October 31, February 28, and May 31.

Fall 2023 (October 31)	Winter 2024 (February 28)	Spring 2024 (May 31)
80%	85%	90%

Questions should be directed to ECAssessment@la.gov.

Slide 14

1

@brittney.cochran@la.gov - please add who they should contact should they have questions

Assigned to Brittney Cochran

Amy Poirier, 9/26/2023

GOLD® Updates

TS GOLD® OSEP Checkpoint Monitoring

Program OSEP administrators should monitor sites, classrooms, and users to ensure checkpoint completion.

For Fall 2023 Checkpoint OSEP Administrators should:

- ensure all children have an entry date reported;
- ensure all current students that have an IEP are marked “yes” as having an IEP. OSEP administrators are encouraged to cross-check SER each month for children with new IEPs to ensure data for all children is accurately reported;
- ensure all children with an IEP have the 4 extra objectives. These objectives include 1c1, 1c2, 1c3, and 1c4. When the child’s profile is marked “yes” for IEP, the system adds these objectives to the child’s report and they are mandatory for OSEP reporting purposes. These objectives cannot be finalized unless they are leveled;

GOLD[®] Updates

TS GOLD[®] OSEP Checkpoint Monitoring

Program OSEP administrators should monitor sites, classrooms, and users to ensure checkpoint completion.

For Fall 2023 Checkpoint OSEP Administrators should:

- children with an IEP cannot be marked with “Not Observed.” “Not Observed” is a null value. These children need to be marked as “Not Yet” or leveled accordingly; and
- by the end of the Spring checkpoint, all children with an IEP that are being reported to OSEP will have to have at least two completed checkpoints or they will not be in your OSEP report. I will reach out again during the Spring to ensure that all of these children have been finalized with two checkpoints.

A decorative graphic on the left side of the slide. It features a vertical arrangement of three beaded necklaces: a gold one on the left, a green one in the middle, and a blue one on the right. The necklaces are partially obscured by a light gray horizontal band at the top and bottom. At the bottom, there is a thin purple and blue textured ribbon.

Upcoming Events

Upcoming Events

New Director Webinar

CNLAS are encouraged to share the monthly webinar for new directors that focuses on a topic related to early childhood quality while also helping to expand directors' network of peers.

The September New Director webinar topic is “CLASS® Observations: What to Expect”

Webinar Date/Time: September 29, 2023 at 12:00 p.m.

Webinar Link:

<https://ldoe.zoom.us/j/92700204655?>

Phone Number: 1-407-381-2552

Meeting ID: 927 0020 4655

Please contact tella.henderson@la.gov with any questions or for assistance.

Upcoming Events

Provider Update Webinar

CNLA's are encouraged to attend the monthly webinars for early childhood providers. These webinars will include important updates and reminders for all provider types.

Providers can access the next provider webinar using the information below:

Webinar Date/Time: Thursday, October 5, at 1 p.m.
Webinar Link: <https://ldoe.zoom.us/j/93597745872>
Phone Number: 1-312-626-6799
Meeting ID: 935 9774 5872

Upcoming Events

Winter Collaboratives

In October 2023, the LDOE will host three opportunities for CNLAs and CCR&Rs to collaborate and improve outcomes for children in 2023-2024.

Each agency should bring no more than four staff members. To determine attendees, please review the recommendations in the table below.

CNLA	CCR&R
<ul style="list-style-type: none">● Community Network Lead Agency Administrator● Education Manager● Specific grant or program manager (i.e. CCAP B-3 Seats)	<ul style="list-style-type: none">● Director● Master Coach(es) <p><i>*Please assign different staff to represent the CNLA and CCR&R if the entity represents both the CNLA and CCR&R</i></p>

Winter Collaboratives

Date and Time	Location	CCR&R Attendees
October 12 8:30 - 11:30 a.m.	Rapides	Children's Coalition, NSU, and VOA 567
October 18 8:30 - 11:30 a.m.	Baton Rouge (Claiborne Building)	Agenda, Jefferson, Lafayette-OTB5, Pointe Coupee, VOA 234, VOA 567
October 25 8:30 - 11:30 a.m.	St. Tammany	Agenda and VOA 234

Winter Collaborative

October 12 - Rapides Participants

CCR&R	Ready Start Network or Community Network Lead Agency
Children's Coalition	Caldwell, Catahoula, E. Carroll, Franklin, Lincoln, Madison, Morehouse, Ouachita, Richland, Tensas, Union, W. Carroll
NSU	Bienville, Bossier, Caddo, Catahoula, Claiborne, Concordia, DeSoto, Grant, Jackson, LaSalle, Natchitoches, Rapides, Red River, Sabine, Webster, Winn
VOA 567	Allen, Avoyelles, Beauregard, Cameron, Evangeline, Jefferson Davis, Vernon

Winter Collaborative

October 18 - Claiborne Participants

CCR&R	Ready Start Network or Community Network Lead Agency
Agenda	Assumption, Lafourche, Orleans, Terrebonne
Jefferson	Jefferson
Lafayette	Lafayette
Pointe Coupee	Pointe Coupee
VOA 234	Ascension, EBR, E. Feliciana, Iberville, WBR, W. Feliciana, Zachary, Central, Tangipahoa
VOA 567	Acadia, Calcasieu, Iberia, St. Landry, St. Martin, St. Mary, Vermilion

Winter Collaborative

October 25 - St. Tammany Participants

CCR&R	Ready Start Network or Community Network Lead Agency
Agenda	Plaquemines, St. Bernard, St. Charles, St. James, St. John, St. Tammany, Washington
VOA 234	Livingston, St. Helena

Events and Deadlines

September 29: New Director Monthly Webinar

September 30: Early Childhood Education Fund Application due to devon.camarota@la.gov for all Community Network Lead Agencies, even if not requesting funds.

October 1: Deadline to submit 2023-2024 Coordinated Observation Plans to the CNLA FTP folder

October 1: Deadline to schedule all Fall 2023 CLASS[®] Observations in the [EC Portal](#)

October 10: Deadline to submit CCAP B-3, LA 4, and NSECD Attendance for September 2023

October 12: Winter Collaboratives at Rapides

October 18: Winter Collaboratives at Baton Rouge

October 25: Winter Collaboratives at St Tammany

October 31: Deadline to submit October 1 Child Count via the [Child Count Portal](#).

October 31: Fall TS Gold[®] Checkpoint

