



Community Network Lead Agency Office Hours

Oct. 3, 2023

Agenda

- I. Early Childhood Reminders
- II. 2024-2025 Coordinated Enrollment Plan
- III. Guest Speaker: Taffy Morrison, Navigators for a Healthy Louisiana
- IV. Upcoming Events



Early Childhood Reminders

Early Childhood Reminders

Naming Shared Files Effectively

Any time a CNLA or CCR&R is sending a document to the Department, please include the parish name, the CNLA name, or the CCR&R name in the name of the file.

The LDOE receives documents from all parishes every time there is a submission of an application, template, etc. due. When the name of the parish/entity is not included in the file name, documents may be lost or not credited to the correct entity.

Naming convention best practice includes: **“Parish Name Title of File 202X-202Y”**

- GOOD: “Washington Parish ECE Fund Application 2024-2025”; “Acadia Parish Local Observation Protocol 2023-2024”
- BAD: “FINAL EBR Local Obs. Plan 23-24”

Early Childhood Reminders

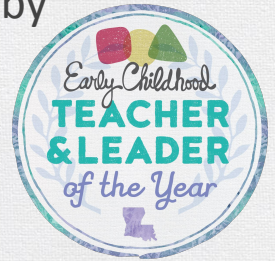
Teacher and Leader of the Year Applications

The LDOE thanks all stakeholders for supporting the excellent educators awards program by nominating candidates for their respective awards.

The LDOE recognizes the incredible impact of early childhood educators, and the Early Childhood Teacher and Leader of the Year Award is a key component of recognizing the incredible work of these professionals.

The applications will be sent to all nominated candidates, and available to any additional interested candidates on the [Louisiana Believes Awards](#) page by mid-October. Applications will be due Jan. 11, 2024.

Questions should be directed to earlychildhood@la.gov.



Early Childhood Reminders

September 30 Periodic Expense Reports

At the end of each quarter, recipients of allocations through eGMS are required to submit Periodic Expense Reports (PERs) to demonstrate their spending for that time.

- Periodic Expense Reports (PERs) for the first quarter of the 2023-2024 Fiscal Year opened on Sept. 30, 2023
- PERs should be submitted by Oct. 15, 2023
- PERs must include documentation to support the reimbursement(s) submitted during that quarter
- PERs are submitted for each funding source, and are required even if no reimbursements were submitted during that quarter

Please reach out to LDOE.GrantsHelpdesk@la.gov with questions.

Early Childhood Reminders

October 1 Child Count Data Collection

October Child Count data must be submitted via the [Child Count Portal](#) by Oct. 31, 2023 by 11:59 p.m.

CNLAs may submit data to the LDOE via the [Child Count Portal](#) once counts for all publicly-funded children served at each publicly-funded site as of October 1 are verified.

- CNLAs are encouraged to work directly with all providers to ensure child count data are captured accurately based on the child's age, funding source, demographic, and background information.
- For the 2023-2024 academic year, CNLAs will have the option to allow site leaders to enter site-level child count data into the [Child Count Portal](#).
- To assist in verifying student data, it is recommended sites maintain and/or provide a copy of on-site classroom generated rosters based on October 1 enrollment (captured on Oct. 2, 2023).

Contact Alicia Franklin at alicia.franklin@la.gov for additional support.

Early Childhood Reminders

October 1 Child Count Resources

October Child Count data must be submitted via the [Child Count Portal](#) by Oct. 31, 2023 at 11:59 p.m.

October Child Count resources

- [Child Count user guide for network-level users](#)
- [Child Count user guide for site-level users](#)
- [Overview of Early Childhood Funding Sources](#)
- [October Child Count template](#)

Contact Alicia Franklin at alicia.franklin@la.gov for additional support.

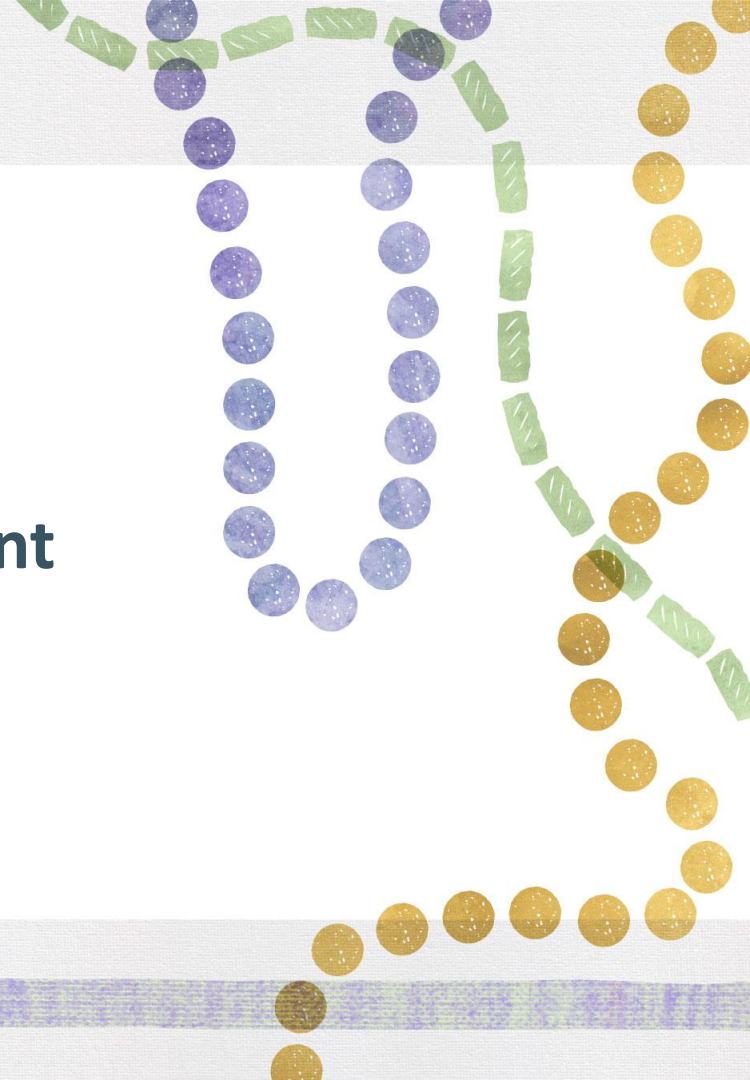
2022-2023 Performance Profiles

- Performance Profiles for the 2022-2023 academic year will be released in alignment with K-12 school performance scores
- The release is anticipated for November 2023
- Preliminary results from last year can be calculated using the [performance rating calculator](#) and the community network CLASS[®] calculator roster from the EC portal

Please contact robert.jones4@la.gov with any questions.



2024-2025 Coordinated Enrollment



2024-2025 Coordinated Enrollment

Coordinated Enrollment Plan Submission

October marks the start of the Coordinated Enrollment Plan planning and submission window.

Community Network Lead Agencies should begin the process of completing their Coordinated Enrollment Plan for the 2024-2025 academic year.

Networks should work with program partners (providers, community stakeholders, and families) to complete the Coordinated Enrollment Plan in full, so that the LDOE may understand and evaluate the effectiveness of child enrollment across Louisiana.

The 2024-2025 Coordinated Enrollment Plan Template will be emailed to all CNLAs by the EOD, Friday, October 6.

Please contact brandy.morin@la.gov for additional information or support completing your network's Coordinated Enrollment Plan.

2024-2025 Coordinated Enrollment Important Dates

Date	Events
October 6	The LDOE releases the Coordinated Enrollment Plan Template
October 17	The LDOE releases the Coordinated Enrollment Plan Jotform
October 18 - November 17	Collaborate with program partners to complete the Coordinated Enrollment Plan
November 18 - December 1	Finalize the Coordinated Enrollment Plan for submission in Jotform
December 4	The CNLA submits Coordinated Enrollment Plan via Jotform

Please contact brandy.morin@la.gov with any questions.



**Guest Speaker: Taffy Morrison, Navigators
for a Healthy Louisiana**



Navigators for a Healthy Louisiana

Navigators for a Healthy Louisiana is a free federally funded non-profit program supported by a grant from the U.S. Department of Health and Human Services Center for Medicare and Medicaid Services under the Affordable Care Act to assist Louisiana residents across the state in all parishes with access to low-cost or no cost health insurance options depending on their eligibility.

We provide:

- One-on-one assistance with applying, updating info and educating about health insurance options for Marketplace, Medicaid and LaCHIP
- How to utilize health coverage services & locate providers
- How to access preventable health services
- Onsite enrollment opportunities at centers
- Flexible meeting times-before, during or after hours (with director approval)



Who Can Be Provided Assistance?

Navigator assistance is available for educators and staff who:

- Do not currently have health insurance
- Are not offered health insurance coverage through their center or employer
- Can't afford their center's or employer's health insurance coverage
- Not offered insurance through their spouse's employer or can't afford it
- Are no longer covered under their parent's health insurance plan
- Have lost their Medicaid coverage or other health insurance coverage

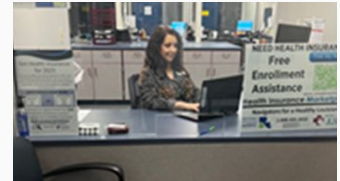
What Affordable Health Insurance Options Are Available for Educators and Staff?

✓ Marketplace Health Insurance Plans

Healthcare.gov - Affordable Care Act

- U.S citizen or persons legally in U.S.
- Not enrolled in Medicaid
- Not offered an affordable employer health insurance plan
- Not incarcerated

Health Insurance Marketplace



✓ Medicaid-Healthy Louisiana Plans

- Low-income parent of children under age 19
- Child under age 19
- Pregnant
- Louisiana citizen/resident aged 19 to 64 years old with a household income at or below 100% of the federal poverty level



Medicaid & Marketplace Health Insurance Plan Enrollment Periods

**Health Insurance
Marketplace**

When can I enroll in Medicaid & Marketplace health coverage?

- Medicaid and LaCHIP can be applied for any time of the year if eligible.
- **Special Enrollment Period (SEP)**
 - Life changes or events qualification*
 - Losing health coverage
 - No longer eligible for Medicaid
 - Moving
 - Getting married
 - Having a baby or adopting a child
 - Certain low-income level**
- **Marketplace Health Insurance Open Enrollment Period - November 1st - January 15th**

***Note:** Must apply within 60 days of change or event.

****Navigators can assist educators to see if qualify.**

Connecting with Navigators for a Healthy Louisiana

Schedule an educational presentation for center staff and educators by:

- Filling out the online form and checking you are a director or
- Contacting Taffy Morrison directly taffy.morrison@swlahec.com or 985-960-0098

Educators can directly be connected to a local parish Navigator for free one-on-one assistance with checking eligibility, applying for a Marketplace, Medicaid or LaCHIP Insurance Plan, or for updating existing accounts by choosing an option below. **Takes less than 2 minutes.**

- Scan the **QR code** located below & on all our material to fill out the online form
□ Name, Parish, Contact Number, Email Address, Center Name, Referral Source, Comments
- Go to www.GetCoveredLA.org and fill out the Early Childhood online form
- Call 1-800-435-2432



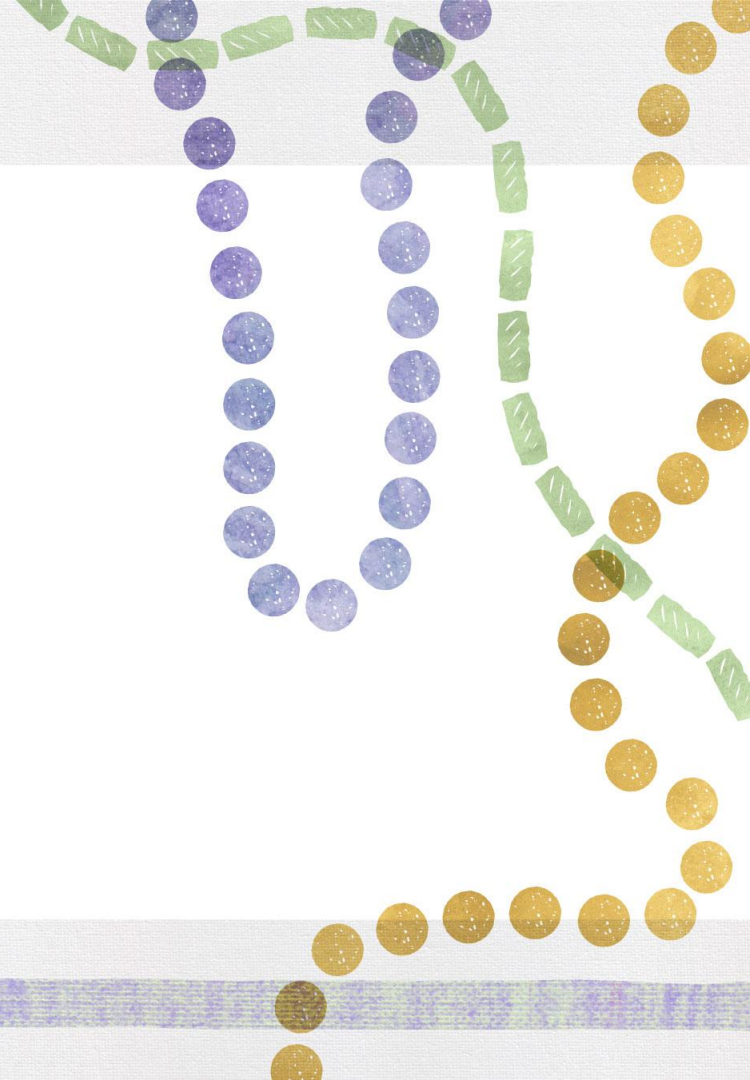
Navigators for a Healthy Louisiana

Contact Information

Taffy Morrison
LDOE Navigator Partnership Liaison
Navigators for a Healthy Louisiana
Statewide Community Outreach Manager
taffy.morrison@swlahec.com
(985) 960-0098



Upcoming Events



Upcoming Events

New Director Webinar

CNLAS are encouraged to share the monthly webinar for new directors that focuses on a topic related to early childhood quality while also helping to expand directors' network of peers.

The October New Director webinar topic is “Understanding the Child Care Criminal Background Check System”:

Webinar Date/Time:	October 27, 2023 at 12:00 p.m.
Webinar Link:	https://ldoe.zoom.us/
Phone Number:	1-407-381-2552
Meeting ID:	927 0020 4655

Please contact tella.henderson@la.gov with any questions or for assistance.

Upcoming Events

Provider Update Webinar

CNLAs are encouraged to attend the monthly webinars for early childhood providers. These webinars will include important updates and reminders for all provider types.

Providers can access the next provider webinar using the information below:

Webinar Date/Time:	Thursday, October 5, at 1 p.m.
Webinar Link:	https://ldoe.zoom.us/j/93597745872
Phone Number:	1-312-626-6799
Meeting ID:	935 9774 5872

Upcoming Events

Winter Collaboratives

In October 2023, the LDOE will host three opportunities for CNLAs and CCR&Rs to collaborate and improve outcomes for children in 2023-2024.

Each agency should bring no more than four staff members. To determine attendees, please review the recommendations in the table below.

CNLA	CCR&R
<ul style="list-style-type: none">● Community Network Lead Agency Administrator● Education Manager● Specific grant or program manager (i.e. CCAP B-3 Seats)	<ul style="list-style-type: none">● Director● Master Coach(es) <p><i>*Please assign different staff to represent the CNLA and CCR&R if the entity represents both the CNLA and CCR&R</i></p>

Winter Collaboratives

Date and Time	Location	Attendees
October 12 8:30 - 11:30 a.m.	Rapides - 619 Sixth St. Alexandria, LA 71306	CCR&R Attendees: Children's Coalition, NSU, and VOA 567
October 18 8:30 - 11:30 a.m.	Baton Rouge - 1201 N. Third St. Baton Rouge, LA 70806	Agenda, Jefferson, Lafayette-OTB5, Pointe Coupee, VOA 234, VOA 567
October 25 8:30 - 11:30 a.m.	St. Tammany - 23468 Sparrow Road Building D Mandeville, LA 70448	Agenda and VOA 234

Winter Collaborative

October 12 - Rapides Participants

CCR&R	Ready Start Network or Community Network Lead Agency
Children's Coalition	Caldwell, Catahoula, E. Carroll, Franklin, Lincoln, Madison, Morehouse, Ouachita, Richland, Tensas, Union, W. Carroll
NSU	Bienville, Bossier, Caddo, Catahoula, Claiborne, Concordia, DeSoto, Grant, Jackson, LaSalle, Natchitoches, Rapides, Red River, Sabine, Webster, Winn
VOA 567	Allen, Avoyelles, Beauregard, Cameron, Evangeline, Jefferson Davis, Vernon

Winter Collaborative

October 18 - Claiborne Participants

CCR&R	Ready Start Network or Community Network Lead Agency
Agenda	Assumption, Lafourche, Orleans, Terrebonne
Jefferson	Jefferson
Lafayette	Lafayette
Pointe Coupee	Pointe Coupee
VOA 234	Ascension, EBR, E. Feliciana, Iberville, WBR, W. Feliciana, Zachary, Central, Tangipahoa
VOA 567	Acadia, Calcasieu, Iberia, St. Landry, St. Martin, St. Mary, Vermilion

Winter Collaborative

October 25 - St. Tammany Participants

CCR&R	Ready Start Network or Community Network Lead Agency
Agenda	Plaquemines, St. Bernard, St. Charles, St. James, St. John, St. Tammany, Washington
VOA 234	Livingston, St. Helena

Events and Deadlines



October 10: Deadline to submit CCAP B-3, LA 4, and NSECD Attendance for September 2023

October 12: Winter Collaboratives at Rapides

October 18: Winter Collaboratives at Claiborne

October 25: Winter Collaboratives at St Tammany

October 27: [New Director Webinar](#)

October 31: Deadline to submit October 1 Child Count via the [Child Count Portal](#).

October 31: Fall TS Gold[®] Checkpoint