

LOUISIANA DEPARTMENT OF EDUCATION



Teaching and Learning Monthly Call

October 25, 2023

Agenda

- I. [Spotlight: Science HQIM in High School](#)
- II. [Academic Content](#)
- III. [Diverse Learners](#)
- IV. [Educator Development](#)
- V. [Certification](#)

Suggested participants for this call:

- Early Childhood Supervisors
- Chief Academic Officers/Curriculum Supervisors
- Literacy Coordinators
- Special Education Supervisors
- English Learner Supervisors
- Content and Mentor Leader Coordinators
- Talent Supervisors
- EdTech Directors and Coaches



Spotlight: Science HQIM in High School



High School Science Resources for Learning Recovery

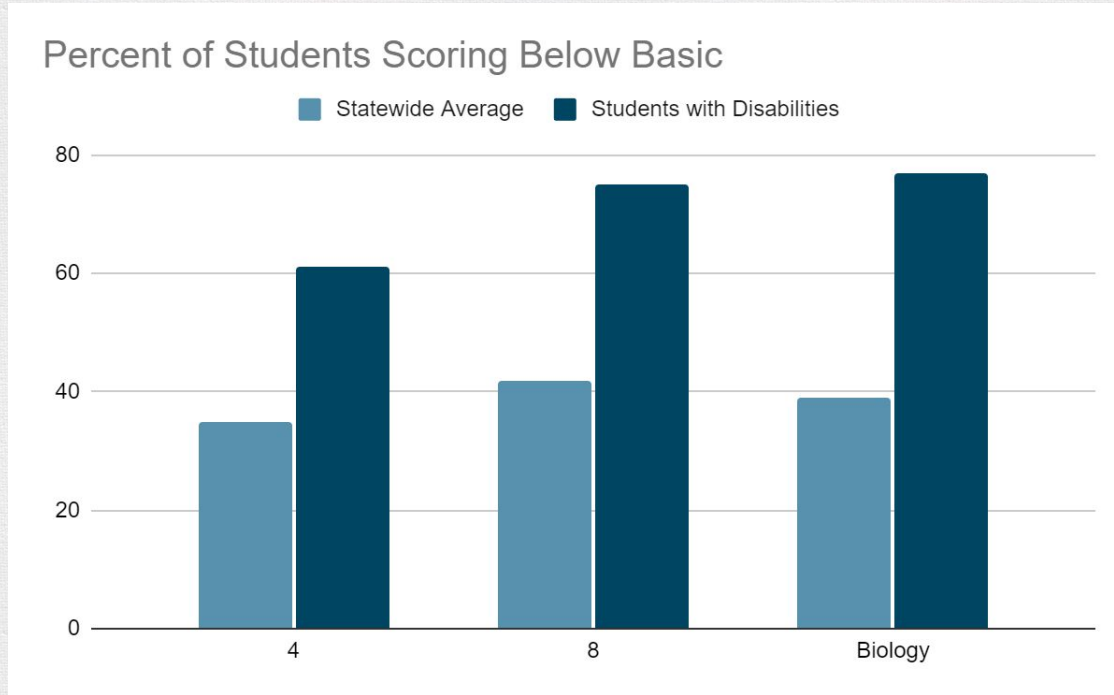


What? Teacher professional learning and student materials to support implementation of OpenSciEd high school units in Biology, Chemistry, and Physics.

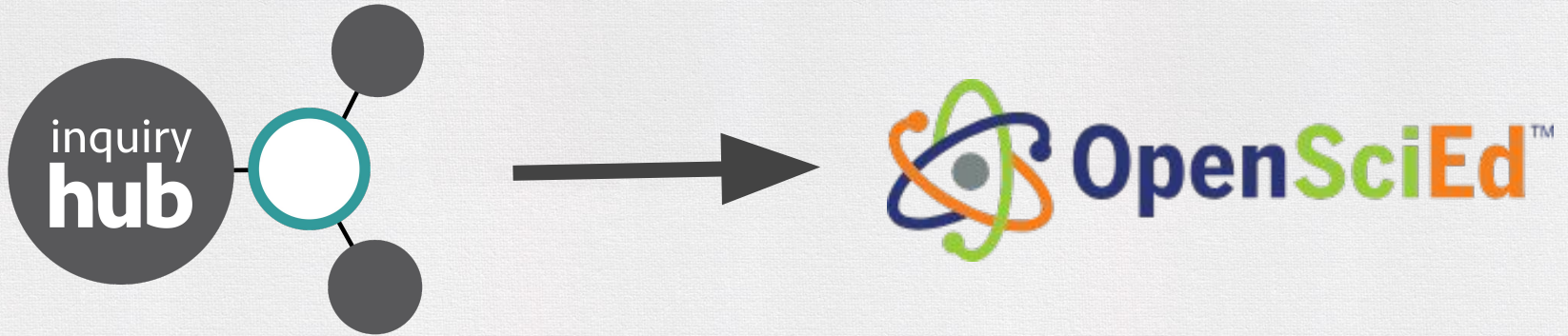
Why? To broaden student access to high-quality science instruction in these courses with the goal of addressing learning loss.

When? Professional learning in January with materials supplied in time for spring implementation.

Why the focus on high school?



Why the focus on high school?



Why OpenSciEd?

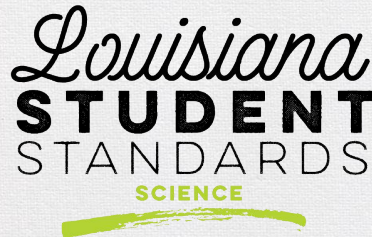
OpenSciEd is designed to address the key shifts in science instruction called for by the [Louisiana Student Standards for Science](#):

- Apply important **key ideas** in science that have **broad importance** through investigating and explaining to **scientific phenomena**.
- Integrate the **practices**, or behaviors, of scientists and engineers as they **investigate real-world phenomenon** and **design solutions to problems**.
- Make **connections across the domains of science** (life, physical, earth and space, environmental, and engineering, technology, and applications of science).

OpenSciEd In Louisiana

[OpenSciEd](#) is a **collaborative effort** to create and pilot robust, research-based, **open-source science instructional materials** designed for college and career-ready science standards.

Louisiana was one of ten partner states that were initially involved in this collaboration. Teachers and students in Louisiana, through involvement with the field test, supplied vital feedback for the revision of the middle school program that has recently received a Tier 1 review.



OpenSciEd for High School

Development of the high school materials began in 2021 and Louisiana teachers participated in the two year field test which concluded last spring.

University of Colorado at Boulder, the developers for another Louisiana pilot, inquiryHub Biology, led the development for the OpenSciEd materials.

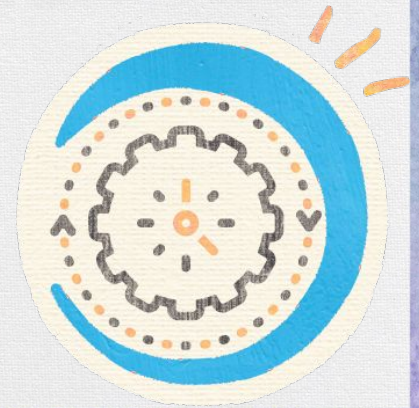
Guides for piloting all three course are currently available on the [K-12 Science Resources web page](#).



More About the Learning Recovery Resources

To ensure effective implementation, the following resources will be provided to all Biology, Chemistry, and Physics teachers in public Louisiana high schools:

- a regional, two-day introductory training in January 2024;
- kit materials for a publicly available unit; and
- digital licenses for publicly available units in each course.



Implementation Models

There will be guidance to support two different [implementation models](#):

- Model 1 for systems already participating in the OpenSciEd pilot.
- Model 2 for systems that are new to OpenSciEd.

Optional office hours are held virtually on the second Wednesday of each month in order to provide direct support to piloting systems.

Model 1 Example - Biology

inquiryHub Biology Unit 1 Bends 1 & 2	inquiryHub Biology Unit 2 Bends 1 & 2	OpenSciEd B.1 Ecosystem Interactions and Dynamics	inquiryHub Biology Unit 3 Bend 2: Trees
fall	fall/spring	spring	spring

Model 2 Example - Biology

OpenSciEd B.1	OpenSciEd B.2 <i>(field test version)</i> OR iHub Unit 3 Bend 1: Trees	OpenSciEd B.3 <i>(field test version)</i> OR iHub Unit 2 Bend 1: DMD	OpenSciEd B.4	OpenSciEd B.5
fall	fall	fall	spring	spring

High School Science Resources for Learning Recovery

The first step in accessing these resources is to [submit the information form](#) by **November 9**. The following information will be collected:

- high school science contact for your system;
- the number of teachers for Biology, Chemistry, and Physics;
- the number of students enrolled in each course; and
- the number of support personnel who will need access.

Please contact STEM@la.gov with questions.



Academic Content



Instructional Materials Review Updates

Recently Published Tier 1 Materials

The Department conducts ongoing reviews of curricular materials to support school systems in adopting curricula in all core subjects. Newly rated Tier 1 curricula are listed below. All reviewed curricula can be found on the [Tiered Reviews](#) web page.

Publisher	Title and Grade Levels	Core Subject	Tier
Kaplan Early Learning	Connect4Learning 2nd Edition, Pre-K, Ages 4-5	ECE	Tier 1
McGraw Hill LLC	StudySync, English II-IV	ELA	Tier 1
Great Minds PBC	Eureka Math Squared, Grades K-7	Math	Tier 1
Kendall Hunt Publishing	OpenSciEd, Grade 6	Science	Tier 1

State Reviews Reports: [Weekly Report](#) and [Comprehensive Tiered Report](#)

Act 517 Compliance Reviews Status Report

The Department is reviewing currently posted Tier 1 and 2 ELA curricula that includes foundational skills for [Act 517 \(2022\)](#) compliance. Upon completion, a cover page is added to the posted review noting the impact of the review for compliance.

The [Act 517 Compliance Reviews Status Report](#) lists the status of all Act 517 compliance reviews, including reviews that have been completed, titles that are under review or ready for review, and titles that have not been reviewed for Act 517 compliance.

Please contact louisianacurriculumreview@la.gov with questions.

On June 21, 2022, Louisiana lawmakers signed [Act 517](#) into law to ensure that all textbooks and instructional materials used to teach students to read are high-quality, fully aligned to state content standards, and based on literacy strategies that are scientifically researched with proven results in teaching phonological awareness, letter formation, phonics, decoding, fluency, vocabulary, and comprehension. As part of the Louisiana Department of Education's support for a seamless transition to textbooks and instructional materials that are based on scientifically-researched literacy strategies, the LDOE identified the criterion and indicators used to review instructional materials that were impacted as a result of this legislation.

The LDOE reached out to publishers with posted Tier 1 or Tier 2 state reviews that include foundational skills and requested access to their instructional materials to examine for the following changes in alignment resulting from [Act 517](#):

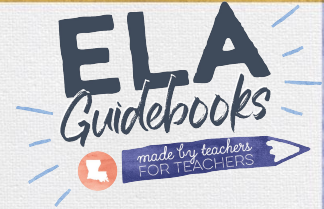
- Instructional materials and embedded assessments do not require or encourage the three-cueing system model of reading (students gaining meaning from print through Semantic, Syntactic, or Grapho-phonics cues) in reading instruction;
- Instructional materials and embedded assessments do not require or encourage visual memory as the primary basis for word recognition; and/or
- Instructional materials and embedded assessments do not require or encourage MSV (Meaning, Structure, and Visual) cues in reading instruction.

Completed Reviews						
Review Cycle	Content Area	Tier	Publisher	Title	Status	Impact
2017-2018	ELA	1	Amplify Education	Core Knowledge Lang. Arts (CKLA) 2nd Edition, Grades K-5	Published	Tier 1
2016-2017	ELA	1	Open Up Resources	EL Education, Grades K-5	Published	Tier 1
2021-2022	ELA	1	McGraw Hill LLC	Wonders, Grades 3-5	Published	Tier 1
2019-2020	ELA	1	Imagine Learning	EL Education, Grades K-5	Published	Tier 1
2018-2019	ELA	1	Open Up Resources	Bookworms Reading and Writing, Grade 2	Published	Tier 1
2019-2020	ELA INT	1	EPS Operations, LLC	S.P.I.R.E. ELA Intervention Grades 3-8	Published	Tier 1
2013-2014	ELA	1	Core Knowledge	Core Knowledge (CKLA) ELA Skills Strand, Grades K-2	Published	Tier 1
2019-2020	ELA	1	Pearson K12 / Savvas Learning	myView Literacy, Grades K-2	Published	Tier 3
2016-2017	ELA	2	Success for All Foundation	KinderCorner 2nd Edition Plus, Grade K	Published	Tier 3

Review Status Report - Currently Posted Tier 1 and 2 Materials						
Review Cycle	Content Area	Tier	Publisher	Title	Status	Impact
2019-2020	ELA	1	Pearson K12 / Savvas Learning	myView Literacy, Grades 3-5	Under Review	TBD
2020-2021	ELA	1	Houghton Mifflin Harcourt	Into Reading, Grades 3-5	Under Review	TBD
2020-2021	ELA INT	1	Lexia Learning Systems LLC	Lexia Core5 Reading, ELA Intervention Grades 3-8	Under Review	TBD
2020-2021	ELA INT	1	Center for the Collaborative Classroom	SIPPS (Systematic Instruction in Phonological Awareness, Phonics, and Sight Words) ELA Intervention Grades 3-8	Ready for Review	TBD
2019-2020	ELA INT	2	Imagine Learning	Imagine Language & Literacy, Grades 3-6	Ready for Review	TBD



ELA Guidebooks Updates and Resources



ELA Guidebooks 6-8 (2024) Overview Webinar: Updates, Writing progression, Structure, and Access

- **Webinar Date and Time:** November 6 at 3 p.m.
- **Webinar Link:**
<https://ldoe.zoom.us/j/93449668654?pwd=NXpmN1VHQTFFWlIQWFpvK2MrenZMZz09>
- **Webinar Phone number:** 346-248-7799
- **Meeting ID #:** 93449668654

ELA Guidebooks 6-8 (2024) Materials Review Interest Form

- For schools and systems interested in providing feedback on currently released units
- Submit [interest form](#) by **December 1**

Please contact elaguidebooks@la.gov with questions.



DO NOW

Bayou Bridges Updates and Resources

All Grade 4 [Bayou Bridges Units](#) are now available for download. Grade 5 Units 1-5 are available now with the final unit publishing on October 31. Grade 3 units will begin posting the first week of November.

Please see the [Bayou Bridges Detailed Release Schedule](#) for publishing dates for all other grade levels and units.

For additional information and support, please attend any of the upcoming [Office Hours](#).

Please contact classroomsupporttoolbox@la.gov with questions.





DO NOW

Louisiana Green Ribbon Schools

The LDOE is now accepting applications from schools, systems, and early learning centers to be considered as a 2023-2024 [Green Ribbon School](#). Interested applicants should demonstrate progress in

- reducing environmental impacts and costs;
- improving health and wellness; and
- providing effective environmental and sustainability education.

All [applications](#) should be submitted by 5 p.m. on **December 16**.

Please contact environmentaleducation@la.gov with questions.





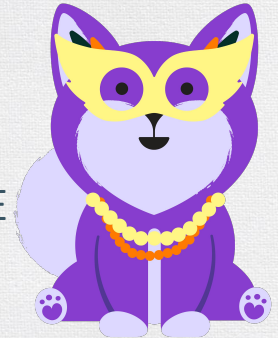
Kami for Louisiana

Every K-12 school system teacher and student will have access to the premium version of [Kami](#) for the 2024-2025 school year at zero cost.

kami

Teachers and teacher leaders can prepare for this initiative by

- Attend kick-off sessions at TLS 2024
- Create professional learning plan for your system
- Take advantage of open summer professional learning Attend LACUE to ask questions directly
- Look for more information in upcoming communications.



Please contact digitallearning@la.gov with questions.

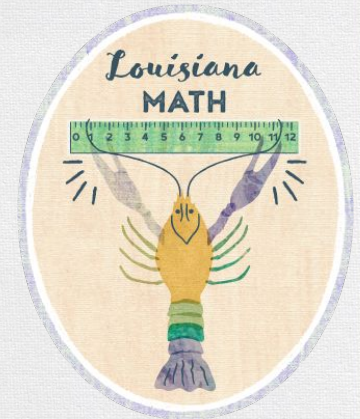


DO NOW

Math Professional Learning Opportunities

[Math Refresh professional learning](#) is available through in-person, virtual, and asynchronous sessions.

- [Math Refresh Regional Tour](#)
- [Zearn Leader Support](#)
- YouTube [Math Playlist](#)



Please contact STEM@la.gov with questions.

Academic Content Contacts

For questions about...	Contact...
ELA Guidebooks	elaguidebooks@la.gov
math, science, and STEM	STEM@la.gov
environmental education	environmentaleducation@la.gov
All other curriculum and instruction	classroomsupporttoolbox@la.gov
Textbooks and instructional materials review, tiered reviews, vendors, and PD vendor guide	louisianacurriculumreview@la.gov
Teacher Leader Advisors	classroomsupporttoolbox@la.gov
World language/immersion	language.acquisition@la.gov
Educational Technology/Digital Learning	digitallearning@la.gov



Diverse Learners Supports



High Cost Services

The 2023-2024 High Cost Services (HCS) Round 1 application is currently open. School systems seeking reimbursement for students with the most significant needs should complete the application by **November 6**.

For more information on HCS, please review the [State Plan](#) and [webinar](#) available in the [Special Education Reporting and Funding](#) library.

Please contact Ashley.Augustine@la.gov with questions.

Alternate Assessment Participation

Every Student Succeeds Act (ESSA) requires certain actions to be taken by any school system with more than 1.0 percent of students participating in the ELA, math, or science alternate assessment.

- Alternate assessment participation data for the spring 2022 administration are available in the data management FTP. Naming convention is LEA Code_LEA Name_1% CAP 2021-22 District and school roster.
- School systems should contact their FTP coordinator to retrieve their data.
- Any school system over 1.0 percent in any subject is required to complete and upload the Alternate Assessment Participation Justification (21-22 Results) form to the FTP by **November 1**.

Please contact specialeducation@la.gov with questions.

April Dunn Act Training

The Department will continue its series of virtual trainings on effective April Dunn Act implementation. [Trainings](#) on **Section Three** of the April Dunn Act Self-Assessment Guide will be held on the following dates:

- November 7 and November 9
- December 4 and December 6
- December 11 and December 13

All trainings will be held at 4:30 p.m.

Please contact Ashley.Augustine@la.gov with questions.

Dyslexia Practitioner Training Cohort

Through a partnership between the LDOE and the Dyslexia Resource Center a cohort of 25 educators will be selected to participate in a free dyslexia practitioner training program.

Program Requirements	
Education	bachelor's degree & valid LA teaching certification
Coursework	140 hours
Practicum/Internship	60 hours
Direct Observations	5 observed lessons
Training Period	minimum - 1 year maximum - 2 year

[Applications](#) are being accepted until **October 27**.

Please contact sueellen.bates@la.gov with questions.

AEM Center Professional Development

Louisiana's Accessible Educational Materials Center is offering multiple Lunch & Learn webinars in November and December. Educators should register.

- Reading and Writing for Students with Significant Disabilities - [Nov. 7 11:30](#)
- Braille Challenge - [Nov. 2 11:30](#)
- LEAP Connect: Let's Connect - [Nov. 3 3:30](#), [Dec. 5 3:30](#)
- Assistive Technology Overview - [Nov. 15 11:30](#)
- Change the HOW, Not the WHAT - [Dec. 19 11:30](#)

Please contact robin@ssdla-aem.org with questions.

Diverse Learner Contacts

For questions about...	Contact...
English Learners	
English Learner instructional support and content	diverselearnersupport@la.gov
English Learner compliance, federal funding, programming	melanie.mayeux@la.gov
Students with Disabilities	
Special education policy, data, reporting	specialeducation@la.gov
Special education instructional support and programming	diverselearnersupport@la.gov



Educator Development



Summit Extensions 2023-2024

Summit Extensions are fall and winter half-day professional learning experiences for key school system level leaders to focus on implementation of the Professional Learning Roadmap which underpins the state's Vision for Success.

Registration is open. Attendees at the Summit Extensions are the superintendent and the existing school system level instructional leadership team or senior cabinet members. The fall Summit Extensions will be held in three locations across the state.

- November 7: Baton Rouge - Sold Out
- November 8: Lake Charles
- November 9: Shreveport

If you have any questions, please email events@emergentmethod.com.

Professional Learning Partner Guide

The LDOE has released a single, comprehensive, digital [guide](#) of approved professional learning partners. Previously, the LDOE has produced over ten separate, static vendor guides for school systems to access as they choose the partners that best fit their needs. Based on feedback from partners and school systems, the dynamic [Professional Learning Partner Guide](#) (PLPG) is more accessible and user-friendly for school system leaders.

Please contact Em.Cooper@la.gov with questions.





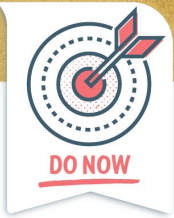
DO NOW

Geaux Teach Scholarship

The Geaux Teach Fund was established in the 2022 Regular Legislative Session with an allocation of \$5M for the purpose of awarding scholarships to students in teacher preparation programs. Students may receive up to \$5,000 annually to cover the cost of tuition fees, textbooks, and instructional materials required for enrollment. School systems are encouraged to share this information with future educators and educators enrolled in alternative certification programs.

Additional information about the Geaux Teach Program, including the [Geaux Teach Application](#) and answers to [Frequently Asked Questions](#), may be accessed on the [LOSFA website](#).

Please contact deborah.paul@la.gov with questions.

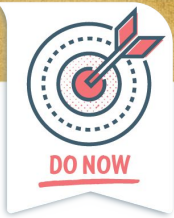


Mentor and Resident Funding Data

To ensure Mentor and resident funding is received, school systems must submit all required data in EdLink by **tomorrow (October 26)**. The data snapshot will be taken on **October 27**. As a reminder, all certificates required (practitioner license, resident license, Mentor credential or waiver) must have been issued by October 1 in order to be eligible for funding.

Please review the funding [webinar](#) for eligibility criteria.

Please contact believeandprepare@la.gov with questions.



Re-Release of Mentor and Principal Surveys

[2023 Believe and Prepare: Principal Survey](#)

This [survey](#) is to be completed by all principals that have had teachers complete Mentor or Content Leader training in the past six school years, have Mentors who served on their campus as a mentor to an undergraduate or post-baccalaureate resident last school year (2022-2023), or have Content Leaders who served in the role last school year (2022-2023).

[2023 Believe and Prepare: Mentor Survey](#)

This [survey](#) is to be completed by all Mentors who have completed training in the past six school years or served as a mentor to an undergraduate or post-baccalaureate resident last school year (2022-2023).

Please complete all surveys by **November 10**.

Please contact believeandprepare@la.gov with questions.



Pre-Educator Pathway Support Call

Offered quarterly, the Pre-Educator Pathway System Lead Professional Learning Community provides virtual opportunities for Pre-Educator Pathway/Grow Your Own System Leads to share best practices related to developing and expanding access to the Pre-Educator Pathway. All school systems are encouraged to attend regardless of current pathway status. The next call will be held on **November 16 at 10 a.m.**

- **Webinar Date and Time:** November 16 at 10 a.m.
- **Webinar Link:** <https://ldoe.zoom.us/j/3455048179>
- **Webinar Phone Number:** 1-346-248-7799, 3455048179#
- **Meeting ID:** 345 504 8179

Please contact believeandprepare@la.gov with questions.

2023 Mentor and Content Leader Training Provider Effectiveness Report

The 2023 Training Provider Effectiveness Report was received by BESE at the October board meeting. This report contains training and assessment data for Mentor and Content Leader training providers for participants that were enrolled in the assessment platform between **08/01/2020 - 7/31/2022**.

The final report is available in the [Mentor Teacher](#) and [Content Leader](#) libraries.

Please contact believeandprepare@la.gov with questions.



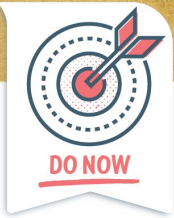
DO NOW

Pre-Educator Pathway Curriculum

The Department has 70 Educator's Rising curriculum licenses to provide at no cost to support the growth of the pre-educator program. If your system is interested in receiving a one-year license at no cost, please complete this [brief survey](#). Priority will be given to those schools/school systems using the curriculum to start a brand new program or expand the program to a new site.



Please contact believeandprepare@la.gov with questions.



New Teacher Survey

The Department is currently conducting a survey of new teachers to solicit input on their experiences and supports needed. The survey covers topics such as:

- Preparation experience
- Recruitment and retention
- Teacher well-being
- Support

Please ask all second-year teachers to complete this [survey](#) no later than **October 30**.

Please contact laurie.carlton@la.gov with questions.

New Teacher of the Year Application Process is Open

- All school systems are encouraged to select up to **three** overall *New Teacher of the Year* finalists, one per division (elementary, middle and high), to send to the state-process.
- School systems may use the state's [application](#)/materials or use their own process to identify local-level honorees.
- Any school system with no local-level process may select and send their candidates directly to the state process.
- The [NTOY timeline](#) provides important dates and deadlines related to this award process.

Contact laurie.carlton@la.gov with questions.

TOY/POY Application Process is Open

- All school systems are encouraged to select up to **three** overall Teacher/Principal finalists, one per division (elementary, middle and high), to send to the state-process.
- School systems may use the state's [applications/materials](#) or use their own process to identify local-level honorees.
- Any school system with no local-level process may select and send their candidates directly to the state process.
- The [TOY/POY timeline](#) provides important dates and deadlines related to this award process.

Contact excellenteducators@la.gov with questions.



Early Childhood Teacher and Leader of the Year Application Process

- All nominated candidates should submit an [application](#), and candidates that were not nominated may also submit an application.
- There are no limits to the number of applications submitted per Network/School System/Community.
- An eligible candidate is one who Directs or Teaches in a CCAP-certified Type III Center or Head Start, Early Head Start Center, or Family Child Care (FCC).
- Candidates may reach out to friends; family; and Community Network Lead Agencies, and Child Care Resource and Referral Agency staff for support in completing a high-quality application, and vice versa.
- Individual candidates are responsible for submitting their own application by or before the deadline of **January 11, 2024**.

Contact shallan.jones@la.gov with questions.

Informational and Help Desk Calls

Informational and Help Desk Calls

- [Teacher and Principal of the Year](#)
- [New Teacher of the Year](#)
- Early Childhood Teacher and Leader of the Year- TBD

Anyone wanting to stay abreast of Teacher/Principal, *New Teacher* and Early Childhood Teacher/Leader of the Year processes are invited to join these calls.

Please contact the following with questions.

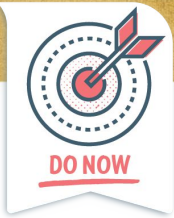
- Teacher/Principal of the Year: excellenteducators@la.gov
- *New Teacher* of the Year: laurie.carlton@la.gov
- Early Childhood Teacher/Leader of the Year: shallan.jones@la.gov

New Program Approvals

Congratulations to the programs that were approved for initial certification, mentor teacher, and content leader at the October BESE meeting.

- Initial Certification: A+PEL, Greaux Lafourche, iteach, LSU, McNeese, Teach Ascension, and Texas Woman's University
- Mentor Teacher: Terrebonne Parish
- Content Leader: Caddo Curriculum Specialists and Curriculum Associates

Please contact believeandprepare@la.gov with any questions.



Compass Information System Updates

The final date to enter or edit 2022-2023 evaluation data for teachers and other instructional personnel in the [Compass Information System \(CIS\)](#) is **October 27**.

The Compass Information System (CIS) will open for the 2023-2024 school year on November 3.

- [Update](#) rosters and [assign](#) evaluators.
- [Enter Student Learning Targets \(SLTs\)](#).
- [Enter](#) observation data.

Leader evaluations can be finalized following the release of School Performance Scores (SPS) later this fall.

Please contact compass@la.gov with questions.

Educator Evaluation Pilot

Following an RFP process, the Department has contracted with the National Institute for Excellence in Teaching (NIET) to assist with reimagining the Louisiana evaluation system based on research and best practice, along with developing resources to support professional learning. This transition to an improved system will span over the course of three years.

Evaluation components and process for all educators and school site leaders are currently being piloted in seventeen school systems across Louisiana.

Evaluation Pilot Components and Process: Teachers

The following components and processes are being piloted with educators:

- Louisiana Educator Rubric for observation
- Three formal observations
 - First observation within first 45 days of school
 - One announced, two unannounced
 - Multiple observers
- Professionalism Survey completed with each observation
- Self-assessment of each formal observation
- Follow-up coaching cycles based on refinement areas
- Student surveys to gather additional information

Evaluation Pilot Components and Process: Leaders

The following components and processes are being piloted with school site leaders:

- Louisiana Leader Rubric
- Beginning-of-Year (BOY) goal setting
- Two formal scored conferences
 - Middle-of-Year (MOY) formative and summative conference
 - End-of-Year (EOY) summative conference
- Self-assessment
- Teacher surveys

Timeline

2023-2024	Pilot of evaluation components and processes
Spring 2024	Adjustments to evaluation system based on pilot feedback
Summer 2024	Training for the Learning Year
2024-2025	Learning Year for all school systems
2025-2026	Full Implementation

2024-2025 Evaluation Learning Year

During the 2024-2025 school year, all school systems will participate in an Evaluation Learning Year, prior to the 2025-2026 full implementation.

- Training for system and school site leaders will take place this summer.
- Training dates will be released this December and registration will open in January.

Please email compass@la.gov with questions.



Certification



Reinstatement of Lifetime Certificates

Lifetime certificates **lapse for disuse** if the educator does not serve as a teacher for five consecutive years without being regularly employed for at least one semester, or 90 consecutive days, as a teacher.

Lapsed certificates may be **reinstated for a five-year** period at the request of an employing school system.

At least **three effective ratings during the five-year reactivation period** must be earned to reinstate **lifetime** validity.

Please contact certification@la.gov with questions.



Call Summary



Key Deadlines & Action Steps

October	<ul style="list-style-type: none">● October 26: Mentor and Resident Funding Data due● October 27: LATM/LSTA conference re-registration rate and mail-in payment postmark deadline● October 27: Last day to enter or edit 2022-2023 evaluation data in CIS● October 30: Deadline to complete new teacher survey● October 31: Early bird registration deadline for LACUE Annual Conference
November	<ul style="list-style-type: none">● November 1: Alternate Assessment Participation Justification (21-22 Results) form due● November 6: High Cost Services (HCS) Round 1 application due● November 9: Deadline to submit contact information to STEM@la.gov for high school science learning recovery materials● November 10: Deadline to complete Mentor and Principal surveys● November 15: Application for Louisiana State World Languages Immersion Site Certification Due
December	<ul style="list-style-type: none">● December 1: Deadline to submit interest form to participate in the materials review for ELA Guidebooks 6-8 (2024)● December 16: Deadline to submit application for Green Ribbon Schools nomination

Upcoming Webinars & Calls

Month	Date, Time, Title and Zoom Link
November	<ul style="list-style-type: none">● November 2, 11:30 a.m.: Braille Challenge● November 3, 3:30 p.m.: LEAP Connect: Let's Connect● November 6, 3:00 p.m.: ELA Guidebooks 6-8 (2024) Overview Webinar● November 7, 11:30 a.m.: Reading and Writing for Students with Significant Disabilities● November 13, 10:30 a.m.: Certification Monthly Call● November 15, 11:30 p.m.: Assistive Technology Overview● November 16, 10 a.m.: Pre Educator Support Call● November 16, 9 a.m. - 12 p.m.: Literacy Communities of Practice Webinar● November 27, 1 p.m. - 2 p.m.: Practicing Principal Webinar: Principal Strategies featuring POY Finalists
December	<ul style="list-style-type: none">● December 6, 1 p.m. - 2 p.m.: Teaching and Learning Monthly Call

Support & Resources

- [School System Support Calendar](#)
- [ELA Guidebooks 3-5 \(2022\) Pilot Feedback Report](#)
- [Google Sheets Updates to Save Time](#) includes information on three Sheets features, along with additional tutorials
- [IMR Weekly Report](#)
- [Comprehensive Tiered Report](#)
- [Archived Tiered State Reviews](#)
- [Archive Dates for Tier 1 & 2 Reviews](#)
- [Pre Educator Pathway Resource Library](#)
- [New Teacher Experience webpage](#)
- [Differentiated Compensation Guidance](#)
- [Staffing and Scheduling Guidance](#)
- [Student Learning Target \(SLT\) Guidance and Sample Templates](#)
- [EDLink 360 Support](#)



Reminders & Repeats





Reminders and Repeats: Academic Content



Computer Science Updates



In accordance with [Louisiana Act 541 \(2022\)](#), the Computer Science Education Advisory Commission (CSEAC) report provides recommendations for the development and implementation of a state action plan for the delivery of education in computer science in all public schools.

CSEAC completed its last meeting July 25, and their report will be shared with the [State Board of Elementary and Secondary Education](#) (BESE) on October 10-11. To learn more about the work of CSEAC, please visit the [Computer Science](#) web page.

Please contact STEM@la.gov with questions.

Computer Science Education Week

[CSEd Week](#) is coming December 4-8!

The Department is working on a list of activities that will be shared on the [STEM Initiative website](#) on November 6. Please contact STEM@la.gov with questions.

Day	Theme
Monday	Cybersecurity and Cybersafety
Tuesday	Computer Science career exploration
Wednesday	Computer Coding
Thursday	Responsible Social media awareness and usage
Friday	Applying Computer Science to your students' interests

Social Studies Curriculum Development

[Bayou Bridges Grades 4 and 5](#)

- All six units for grade 4 will be available for teachers and school systems by October 3
- All six units for grade 5 will be available for teachers and school systems by October 31

A detailed [Bayou Bridges Unit Release Schedule](#) is now available, providing school systems, school leaders, and teachers with precise release dates for each unit in grades K-8.

Please contact classroomsupporttoolbox@la.gov with questions.



Social Studies Curriculum Support



Bayou Bridges Implementation

Office Hours will be held throughout the fall for social studies teachers and school system leaders to

- ask questions and provide feedback about particular lessons or strategies;
- get help locating materials; and
- ask questions about timelines.

School system staff office hours are 11 a.m. - 12 p.m., and teacher office hours are 3:30 - 4 p.m.

Please contact classroomsupporttoolbox@la.gov with questions.

Social Studies Curriculum Development

[Bayou Bridges: A K-8 Louisiana Social Studies Curriculum](#) will contain

- unit plans and daily lessons,
- student and teacher-facing materials,
- engaging primary sources,
- formative and summative assessments, and
- 100% alignment to the 2022 K-8 Louisiana Student Standards for Social Studies as well as the criteria on the 2022-2023 IMR Rubric.



Please contact classroomsupporttoolbox@la.gov with questions.

New Social Studies Resources

The Department has released a new professional learning resource for social studies teachers and support staff. Teachers in grade 4 and grade 5 now have access to [asynchronous professional learning modules](#) that guide them through the key features of the [Bayou Bridges](#) curriculum, as well as a unit study tool to support initial curriculum implementation.



Please contact classroomsupporttoolbox@la.gov with questions.

Social Studies Curriculum Development

The Department is excited to announce that we have partnered with [Core Knowledge](#)[®] to create Bayou Bridges: A K-8 Louisiana Social Studies Curriculum.

- The first phase of development began in December 2022 and materials for grades 4-5 will be available by Spring 2023 for piloting in Fall 2023.
- The complete K-8 Louisiana Social Studies Curriculum will be available for implementation by June 30, 2024.
- More details about this partnership and future release dates will be announced via this call and future newsletter communications.

Please contact classroomsupporttoolbox@la.gov with questions.

FLAME

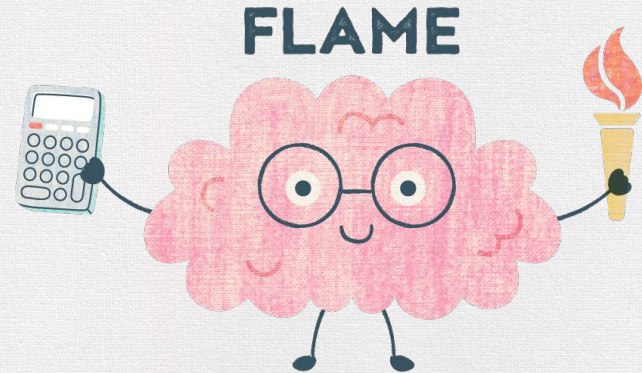
Foundational Lessons for Accelerating Math Education

Available now: [FLAME](#) resources complement high-quality instructional materials by building students' accuracy, efficiency, and flexibility with grade-appropriate fluency skills.

FLAME resources will provide

- activities designed to build grade-level foundations alongside high-quality resources;
- formative tools for teachers to understand students' learning; and
- unit reports for sharing with parents.

Please contact STEM@la.gov with questions.



FLAME Schedule

Release Schedule		
Unit 1	Unit 2	Unit 3
September 2023	November 2023	January 2024

Please contact STEM@la.gov with questions.

Math Refresh Regional Tour

The [Math Refresh Regional Tour](#) begins this fall. Attend the half-day sessions to learn more about

- Supporting Zearn Implementation;
- Leveraging Math Refresh Resources; and
- Foundational Lessons for Accelerating Math Education (FLAME) resources.

Save the date for your regional Math Refresh Sessions. [Registration](#) is now open.

- Calcasieu Parish, October 25
- Caddo Parish, November 14
- Jefferson Parish, November 15

Please contact STEM@la.gov with questions.



Cybersecurity Awareness and Digital Citizenship Resources

Cybersecurity Awareness Month and Digital Citizenship Week

The month of October is Cybersecurity Awareness Month and October 16-22 is Digital Citizenship Week. The Department is releasing a suite of resources to support teachers and students in this initiative. Resources are available on our [Digital Learning](#) web page.

- [Digital Citizenship Teacher Guide](#)
- [Digital Citizenship Student Guide \(Elementary\)](#)
- [Digital Citizenship Student Guide \(Secondary\)](#)
- [Digital Citizenship Parent Guide](#)
- [Cybersecurity for Students](#)

Please contact digitallearning@la.gov with questions.

LACUE Annual Conference Call for Proposals and Registration



The Louisiana Association of Computer Using Educators invites you to attend the LACUE 36th Annual Conference. The conference will be held November 28-30 at the Hyatt New Orleans.

[Registration](#) is now open. Early bird pricing ends on **October 31**.

Please contact digitallearning@la.gov with questions.

World Languages Immersion Site Certification

The LDOE is currently accepting applications for [Louisiana State World Languages Immersion Site Certification](#). All immersion schools, public, charter, or private, with at least three years of program evidence, are eligible to apply for State Certification. To apply to become a Louisiana State Certified World Language Immersion Site, schools must submit a complete [application](#) to the LDOE World Languages Team at language.acquisition@la.gov by **November 15**.

Please contact language.acquisition@la.gov with questions.

Principal Webinars for Math and Literacy

The Department is hosting a series of webinars for K-8 principals on key literacy and math initiatives. The 30 minute webinars are scheduled on January 10, February 5, and March 8.

- **Webinar Date and Time:** January 10 at 1 p.m.
- **Webinar Link:**
<https://ldoe.zoom.us/j/95898838520?pwd=dE1kVjJxRjFsc2ZDWDNEcVRZNDZvQT09>
- **Webinar Phone Number:** 312-626-6799
- **Meeting ID#:** 958 9883 8520

Recordings of the series will be posted on the Department's [YouTube](#) channel and decks saved on the [monthly calls web page](#).

Please contact STEM@la.gov or louisianaliteracy@la.gov with questions.



New High School Science Resources

The Department has published new resources to assist systems participating in the OpenSciEd High School pilot with planning.

- [Louisiana Guide to Piloting OpenSciEd Biology](#)
- [Louisiana Guide to Piloting OpenSciEd Chemistry](#)
- [Louisiana Guide to Piloting OpenSciEd Physics](#)

The guides will be updated on a rolling basis as new public units are released.

Please contact STEM@la.gov with questions.

Back to School LMS Resources

Microsoft Teams, Google Classroom, and Canvas are key educational technology tools with the primary purpose of supporting and enhancing the learning experience for our students. To support schools and teachers in utilizing best practices in their digital classrooms, the Department has released several new resources on guidance for LMS best practices. Resources include:

- [Back to School: Google Classroom](#)
- [Back to School: Canvas](#)
- [Back to School: Microsoft Teams](#)

Additional resources will be available on the [Digital Learning](#) web page.

Please contact digitallearning@la.gov with questions.



Reminders and Repeats: Diverse Learners Supports



Grades 3-5 Modified ELA Guidebook Units

[ELA Modified Guidebook Guide 3-5](#) addresses [Louisiana Connectors](#) for students with significant cognitive disabilities.

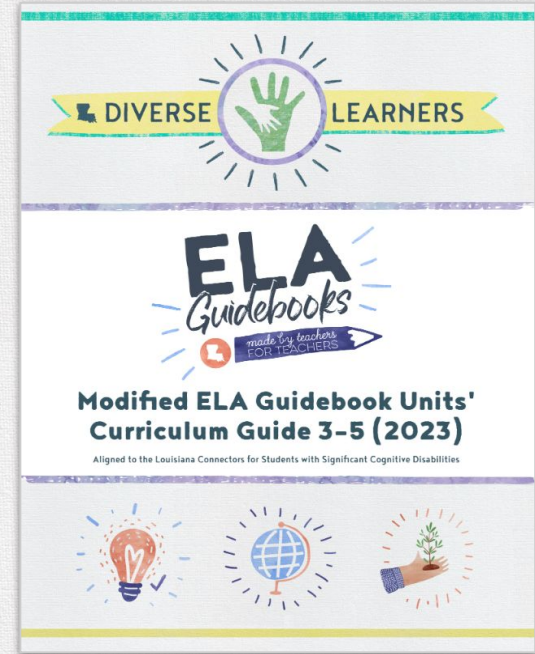
Guidebook text modifications include

- an overall summary of the text with shortened story length, enlarged font size, utilization of graphics, bolded vocabulary words in a different font color, and gray background color.

Student materials include

- a vocabulary chart, table identifying main characters, and materials to test the learner's knowledge.

Please contact diverselearnersupport@la.gov with questions.



Literacy Alternate Assessment Rubric

K-3 students who are determined eligible by the IEP team for alternate assessments using the [K-2 Alternate Assessment Participation Decision-Making Tool](#) or the 3-11 alternate assessment criteria may use the Literacy Alternate Assessment Rubric.

- [Kindergarten - Literacy Alternate Assessment](#)
- [1st - Literacy Alternate Assessment](#)
- [2nd - Literacy Alternate Assessment](#)
- [3rd - Literacy Alternate Assessment](#)
- [Reading Improvement Plan for Students with Significant Cognitive Disabilities](#)

Alternate assessments are reserved for the approximately 1% of students.

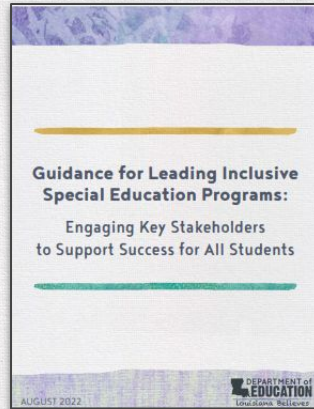
Please contact diverselearnersupport@la.gov with questions.



DO NOW

Local Special Education Advisory Councils (SEAC)

- Compilation of local Special Education Advisory Council [reports](#) is now posted.
- [Act 576](#) details the requirements for local SEACs
- 2023-2024 reports will be due in May 2024 and will detail Council activities throughout the year



Please contact specialeducation@la.gov with questions.



Strong Foundational Literacy Skills in Grades 4-8

- Educators, grades 4-8, can still register for LDOE's [free literacy pd modules](#) aligned to the science of reading.
- *Module 1: Understanding the Science of Reading*
- *Module 2: Exploring Phonics and Advanced Word Study*
- *Module 3: Creating Fluent Readers*
- *Module 4: Developing Vocabulary*
- *Module 5: Increasing Reading Comprehension*
- Modules will be available through January 2024.
- [Registration](#) is still open.

Please contact diverselearnersupport@la.gov with questions.





Reminders and Repeats: Literacy



Literacy Communities of Practice

This year's monthly Literacy Communities of Practice will provide Literacy Coaches and Literacy leaders with resources and strategies to support teachers with utilizing screener data and high-quality instructional materials through professional and collaborative learning structures.

- **Webinar Date and Time:** Every third Thursday of the month from 9 a.m. - 12 p.m.
- **Webinar Link:** <https://ldoe.zoom.us/j/7632097614>
- **Webinar Meeting ID#:** 763 209 7614

Literacy Screener Family Reporting

- Family reporting documents for grades K-3 are now available on the [Literacy Screener landing page](#).
- These reporting documents provide families with students' literacy screener results along with a description of what interventions/supports will be provided by the school and suggestions for activities that can be done at home.
- Pursuant to RS 17:24.10, these documents can serve as the required parental notification for both the screener results and the individual reading improvement plan.
- Information is also provided for families to enroll eligible students in the [Steve Carter Literacy Tutoring Program](#).



DO NOW

Calling All Literacy Tutors

The Steve Carter Literacy Tutoring program is looking for certified teachers who are interested in becoming a tutor. Interested teachers should complete the [Literacy Tutor Interest Form](#). Systems are encouraged to share this information with all K-5 teachers.

To learn more about the Steve Carter Literacy Tutoring program, please contact louisianaliteracy@la.gov.



Reminders and Repeats: Educator Development



Evaluation Updates

There are currently 17 Louisiana school systems participating in an evaluation pilot. These systems will use new tools and processes designed to provide support and feedback to educators to improve instruction and leadership. Feedback from the pilot will be used to inform adjustments prior to full implementation.

Timeline	
2023-2024	Pilot Year
2024-2025	Learning Year
2025-2026	Full Implementation

Please contact compass@la.gov with questions.

Evaluation Updates

Per Bulletin 130, all evaluators must renew certification annually. The [2023-2024 Rater Reliability Evaluator Training](#) and [companion](#) are available in the [Compass Library](#).

- The [2023-2024 Evaluation Guide for Teachers](#) is also available in the Compass Library.

Systems are encouraged to begin setting [Student Learning Targets \(SLTs\)](#) and conducting observations.

- [Resources](#) for setting SLTs are available in the Compass Library.
- Per Bulletin 130, evaluators and evaluatees must meet to discuss all SLTs.
- Per Bulletin 130, all educators will require two observations for the 2023-2024 school year.

Please contact compass@la.gov with questions.

Save the Date: Teacher Leader Summit 2024

The 12th annual [Teacher Leader Summit](#) will be held May 28-30, 2024 in New Orleans, LA at the Ernest N. Morial Convention Center. Registration and presenter application details will be released this fall.

Please contact events@emergentmethod.com with questions.

Summit Extensions 2023-2024

[Summit Extensions](#) are fall and winter half-day professional learning experiences for key school system level leaders to focus on implementation of the [Professional Learning Roadmap](#) which underpins the state's Vision for Success.

[Registration](#) is open. Attendees at the Summit Extension should be the superintendent and the existing school system level instructional leadership team or senior cabinet members. The fall Summit Extensions will be held in three locations across the state.

- November 7: Baton Rouge
- November 8: Lake Charles
- November 9: Shreveport

Please contact events@emergentmethod.com with questions.

The New Teacher Experience Professional Learning Modules

The Department, in partnership with A+PEL, has developed [Professional Learning Modules](#) on topics that are critical for new teacher success. These modules, which are designed to build learning throughout the year, include online asynchronous content followed by an in person learning lab where participants practice and apply these concepts.

This learning opportunity is provided at no cost to systems; however, any travel costs should be covered by the school system. [Registration](#) will close once full.

Please contact laurie.carlton@la.gov with questions.

The New Teacher Experience Affinity Groups

Affinity Groups provide support for beginning teachers across Louisiana through monthly virtual meetings. The goals of these groups include linking new teachers by a common purpose and creating a pathway for novice teachers to collaborate with other new teachers statewide.

There is no cost to join Affinity Groups, but seats are limited. [Registration](#) will be on a first come, first serve basis. Don't let your new teachers miss out on this great opportunity. Registration will close once full.

Please contact laurie.carlton@la.gov with questions.

Mentor and Resident Funding

In the 2023-2024 academic year, the data collection for Mentor compensation will take place using a similar process to what was used in 2022-2023. Those unable to join the Fall 2023 Mentor and Resident Funding call to review the funding eligibility and process should review the posted [PowerPoint deck](#).

The snapshot of Mentor and resident data will be taken on **October 27** in EdLink. As a reminder, all certificates required (Practitioner License, Resident license, Mentor credential or waiver) must be issued by October 1 in order to be eligible for funding.

Please contact believeandprepare@la.gov with questions.

Mentor Waiver

At the April BESE meeting, the Board approved a waiver for the Mentor policy for the 2023-2024 school year. Mentor teacher waivers will be granted on a case-by-case basis through the application process established by the LDOE and at no fee to the applicant, school system, or teacher preparation provider. The 2023-2024 Mentor Waiver [application](#) is currently open.

[Mentor Waiver Applications](#) should be created by the **system leader** responsible for resident placement and/or Mentor recruitment and support. The [Mentor Credential Waiver Application guide](#) provides step by step directions on the application process. Mentor waivers must be issued by October 1 for Mentors to be eligible for funding.

Please contact believeandprepare@la.gov with any questions.



The [Louisiana Pre-Educator Pathway](#) is a Grow Your Own initiative focused on high quality early career development for the next generation of Louisiana's educators. In the 2023-2024 school year, a series of supports will be offered to support Louisiana school systems in the development, implementation, and expansion of the Louisiana Pre-Educator Pathway.

- [Pre-Educator Pathway Resource Library](#)
- [System Lead Professional Learning Community](#)
- Grow Your Own Learning Visits

Details and reminders about all supports will be shared through the [Pre-Educator Pathway Contact List](#).

Please contact believeandprepare@la.gov with questions.

Associate Teacher Program

Under [ACT No. 99](#) of the 2023 Regular Legislative Session, the State of Louisiana now allows schools to hire candidates holding an associate's degree who are enrolled in a teacher education preparation program to serve as a teacher of record. **The authorization for the associate teacher to be a teacher of record is issued by the school system, not the LDOE.**

To be eligible for the Associate Teacher Program, the candidate must:

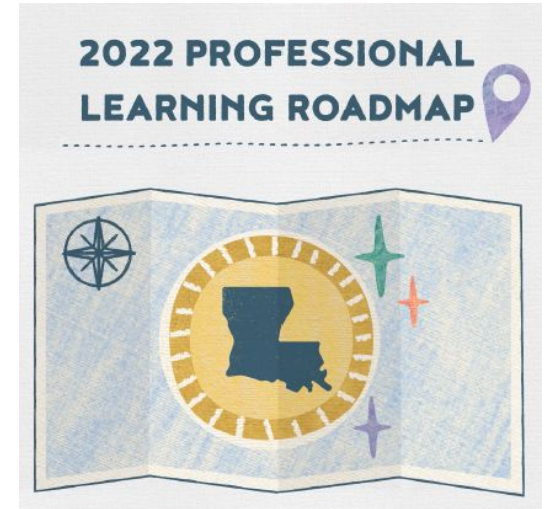
- Have an associate's degree from an accredited college or university.
- Be continuously enrolled in an undergraduate teacher education program at an accredited college or university for the purpose of obtaining a bachelor's degree.
- Be at least twenty-five years of age.

Please reach out to believeandprepare@la.gov with any questions.

Professional Learning Roadmap

A key component of overall school system strategic planning is the implementation of a comprehensive professional learning plan.

The [Professional Learning Roadmap](#) intends to guide and support school system and school leaders in their implementation of essential professional learning structures: school system instructional leadership team, school instructional leadership team, and teacher collaboration.



Mentor and Content Leader Training

As a reminder all CIR schools must have a trained Mentor, ELA content leader, and math content leader. School systems recently received notification regarding their Super App funding to support this work.

School systems should use the [Mentor and Content Leader Training Vendor Guide](#) to select an approved training program. The guide has been updated to include all newly approved programs.

Please contact believeandprepare@la.gov with questions.

Staffing and Scheduling

School systems may use the [Staffing and Scheduling Best Practices Guidance](#) to assist in making staffing and scheduling decisions aligned to the best practices below for the 2023-2024 school year.

- High-quality core instruction is the foundation.
- Effective literacy instruction is central to student success.
- Students with unfinished learning and diverse learners need extra instructional time.
- Both core instruction and acceleration must be provided by content strong staff.
- Meeting the various needs of students supports academic achievement.
- Access and opportunities should be at the forefront of all these strategies.

Please contact louisianaleaders@la.gov with questions.



Reminders and Repeats: Certification



Certification Evaluation Updates

During the 2023 Legislative Session, Act 63 provides for the crediting of evaluations in a variety of settings towards the maintenance of certification. Act 63 allows for the use of successful evaluations in the following settings:

- Out-of-State (OS)
- In-state nonpublic
- Contracted or third party educators
- Allows for 'mixing' of evaluation types

Updates regarding these changes are included in sections 103, 507, and 519 of the proposed revisions for Bulletin 746 being heard at August BESE.

Please contact certification@la.gov with questions.