

LOUISIANA DEPARTMENT OF EDUCATION



Teaching and Learning
Monthly Call
August 23, 2023

Agenda

- I. [Spotlight: Math Refresh](#)
- II. [Academic Content](#)
- III. [Diverse Learners](#)
- IV. [Literacy](#)
- V. [Educator Development](#)
- VI. [School Improvement](#)
- VII. [Certification](#)

Suggested participants for this call:

- Early Childhood Supervisors
- Chief Academic Officers/Curriculum Supervisors
- Literacy Coordinators
- Special Education Supervisors
- English Learner Supervisors
- Content and Mentor Leader Coordinators
- Talent Supervisors
- EdTech Directors and Coaches



Spotlight: Math Refresh

Louisiana's Math Refresh



high-quality,
grade-level core math
instruction



timely, proactive
interventions



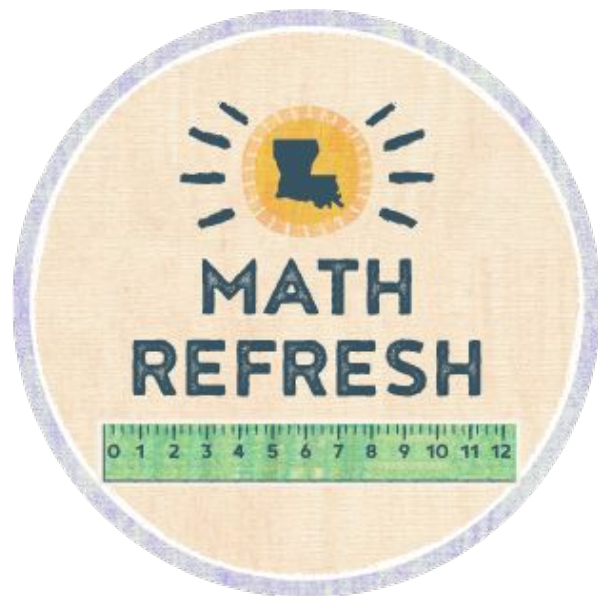
professional learning
and proactive planning



families,
caregivers, and
communities

The [Louisiana Math Comprehensive Plan](#) outlines all available resources and support aligned to the pillars.

Mission: All Louisiana students will have improved math outcomes when these four pillars of high-quality mathematics instruction designed for accelerating learning are effectively implemented at the school, system, and state levels.



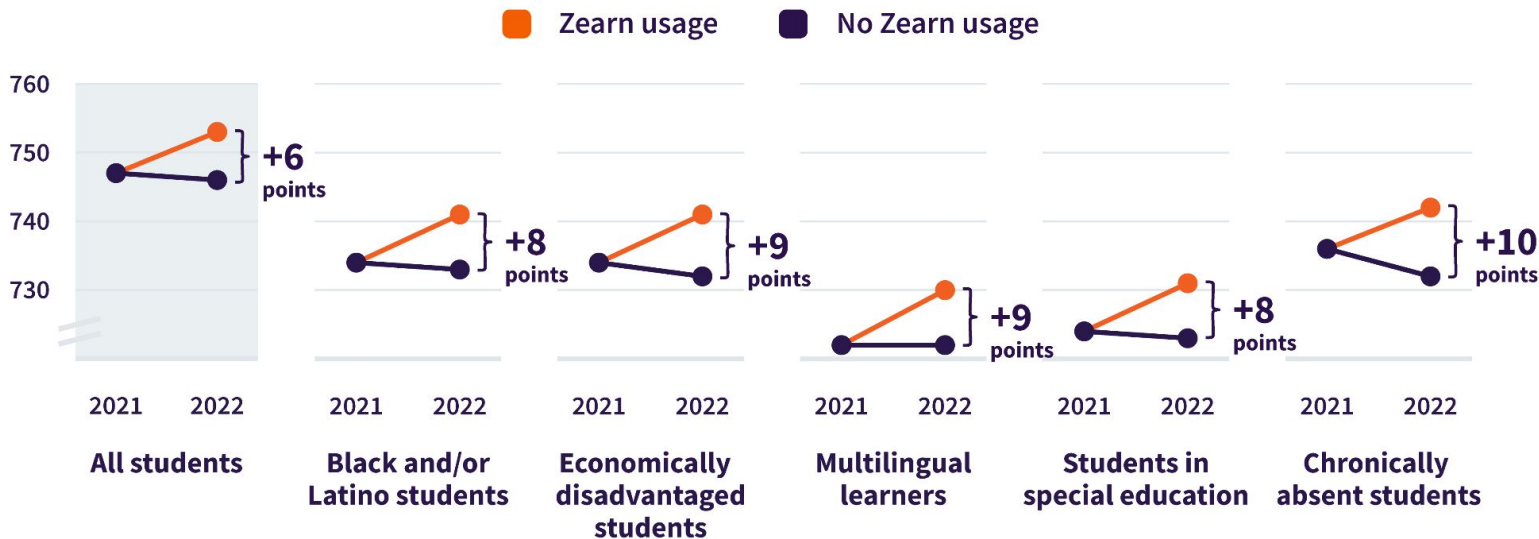
Zearn Impact Study

Key Findings

- ✓ **Elementary and middle school students who consistently used Zearn Math scored significantly higher on 2022 LEAP than matched peers who did not use Zearn Math.** This finding was consistent across Black and/or Latino students, economically disadvantaged students, multilingual learners, students in special education, and chronically absent students.
- ✓ **Impact was greatest for Louisiana students not yet meeting Mastery:** these students gained 1.5 to 2.0 years of math learning in one academic year when they consistently used Zearn Math.
- ✓ **70% of students at the lowest level of math achievement who consistently used Zearn Math improved their achievement level** on the 2022 LEAP, compared to just 45% of students at the same starting level who did not use Zearn.

Across student subgroups, Louisiana students who consistently used Zearn increased math scores more than matched peers who did not use Zearn

Impact of Zearn Math on 2022 LEAP Scale Scores by Student Subgroup

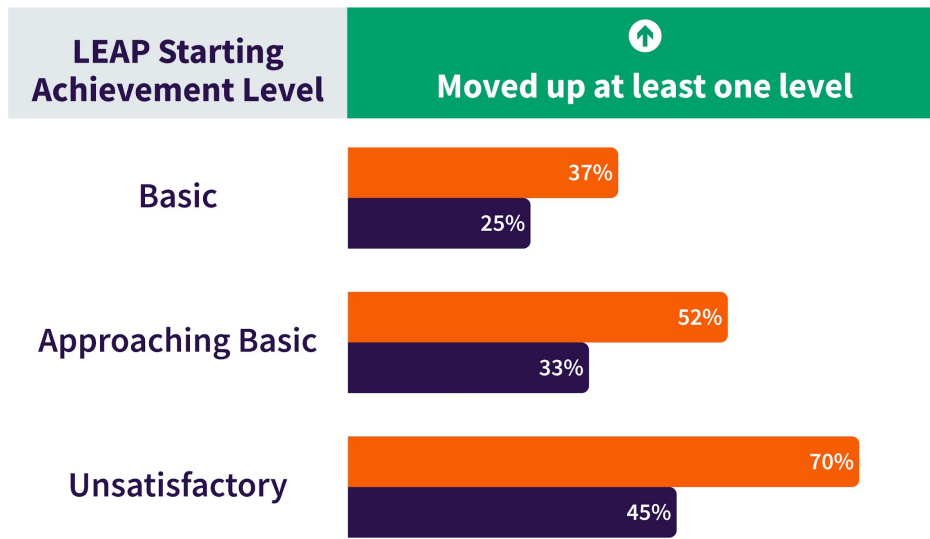


Baseline scores represent averages of Zearn users and non-users' 2021 LEAP scores in cases where starting scores were not identical.

70% of students at the lowest level of math achievement who consistently used Zearn Math improved their achievement level in 2022

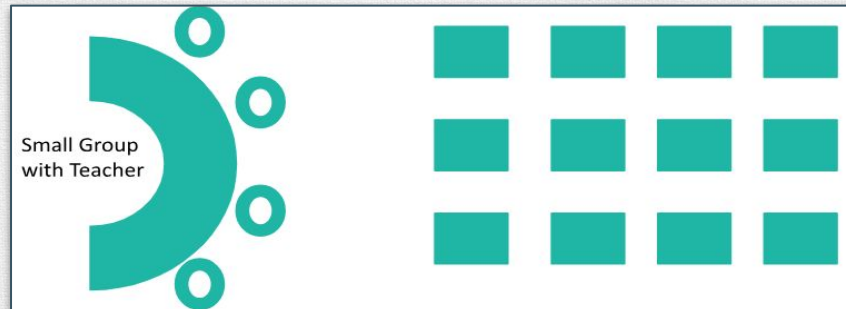
Student Mobility by Starting Achievement Level

■ Zearn usage ■ No Zearn usage



Key Factors for Successful Implementation

1. Proactive teacher planning for individualized student supports
2. Consistent student engagement in Zearn with responsive actions from the teacher
3. Tracking, goal setting, and rewards
4. Behavior management plan



Leader Support for Zearn Implementation

To support leaders with Zearn during the 2023-2024 school year, the Department has partnered with Zearn to provide monthly professional learning on topics to support Zearn implementation in middle school. The first webinar is scheduled for September 12 at 9 a.m.

- **Webinar Date and Time:** September 12 at 9 a.m.
- **Webinar Link:** <https://us02web.zoom.us/j/4842902246?from=addon>
- **Webinar Phone Number:** 646-558-8656
- **Meeting ID#:** 484 290 2246

For future dates and times, please reference the [Zearn Leader Support flyer](#). Complete the [Zearn Support Interest Form](#) for support implementing Zearn alongside your adopted curriculum.

Math Refresh Regional Tour

The [Math Refresh Regional Tour](#) begins with dates this fall. Attend the half-day sessions to learn more about

- Supporting Zearn Implementation;
- Leveraging Math Refresh Resources; and
- Foundational Lessons for Accelerating Math Education (FLAME) resources.

Save the date for your regional Math Refresh Sessions. [Registration](#) is now open.

- East Baton Rouge, October 24
- Calcasieu Parish, October 25
- Caddo Parish, November 14
- Jefferson Parish, November 15

Please contact STEM@la.gov with questions.



Academic Content



Instructional Materials Review Updates

Recently Published Tier 1 Materials

The Department conducts ongoing reviews of curricular materials to support school systems in adopting curricula in all core subjects. Newly rated Tier 1 curricula are listed below. All reviewed curricula can be found on the [Tiered Reviews](#) webpage.

Publisher	Title and Grade Levels	Core Subject	Tier
OER Project	OER Project World History - 1200	Social Studies	Tier 1
Activate Learning	Activate Learning OpenSciEd, Grades 6-7	Science	Tier 1

State Reviews Reports:

- [Weekly Report](#)
- [Comprehensive Tiered Report](#)

Instructional Materials Review Updates

Recently Published Tier 1 Materials

The Department conducts ongoing reviews of curricular materials to support school systems in adopting curricula in all core subjects. Newly rated Tier 1 curricula are listed below. All reviewed curricula can be found on the [Tiered Reviews](#) webpage.

Publisher	Title and Grade Levels	Core Subject	Tier
Zearn	Zearn Math, Grades 1-8	Math	Tier 1
Edmentum Inc.	Louisiana Algebra I	Math	Tier 1
McGraw Hill LLC	Reveal Math, Courses 1-3 Grades 6-8	Math	Tier 1
Scholastic Inc.	PreK On My Way, Ages 4-5	ECE	Tier 1

Act 517 Compliance Reviews Status Report

The Department is reviewing currently posted Tier 1 and 2 ELA curricula that include foundational skills for [Act 517](#) compliance. Upon completion of each review, a cover page is added to the posted review noting the impact of the review for compliance.

The [Act 517 Compliance Reviews Status Report](#) lists the status of all Act 517 compliance reviews.

Please contact louisianacurriculumreview@la.gov with questions.

On June 21, 2022, Louisiana lawmakers signed [Act 517](#) into law to ensure that all textbooks and instructional materials used to teach students to read are high-quality, fully aligned to state content standards, and based on literacy strategies that are scientifically researched with proven results in teaching phonological awareness, letter formation, phonics, decoding, fluency, vocabulary, and comprehension. As part of the Louisiana Department of Education's support for a seamless transition to textbooks and instructional materials that are based on scientifically-researched literacy strategies, the LDOE identified the criterion and indicators used to review instructional materials that were impacted as a result of this legislation.

The LDOE reached out to publishers with posted Tier 1 or Tier 2 state reviews that include foundational skills and requested access to their instructional materials to examine for the following changes in alignment resulting from [Act 517](#):

- Instructional materials and embedded assessments do not require or encourage the three-cueing system model of reading (students gaining meaning from print through Semantic, Syntactic, or Grapho-phonics cues) in reading instruction;
- Instructional materials and embedded assessments do not require or encourage visual memory as the primary basis for word recognition; and/or
- Instructional materials and embedded assessments do not require or encourage MSV (Meaning, Structure, and Visual) cues in reading instruction.

Act 517 Completed Compliance Reviews

Completed Reviews						
Review Cycle	Content Area	Tier	Publisher	Title	Status	Impact
2017-2018	ELA	1	Amplify Education	Core Knowledge Lang. Arts (CKLA) 2nd Edition, Grades K-5	Published	Tier 1
2016-2017	ELA	1	Open Up Resources	EL Education, Grades K-5	Published	Tier 1
2021-2022	ELA	1	McGraw Hill LLC	Wonders, Grades 3-5	Published	Tier 1
2019-2020	ELA	1	Imagine Learning	EL Education, Grades K-5	Published	Tier 1
2018-2019	ELA	1	Open Up Resources	Bookworms Reading and Writing, Grade 2	Published	Tier 1
2019-2020	ELA	1	Pearson K12 / Savvas Learning	myView Literacy, Grades K-2	Published	Tier 3
2016-2017	ELA	2	Success for All Foundation	KinderCorner 2nd Edition Plus, Grade K	Published	Tier 3

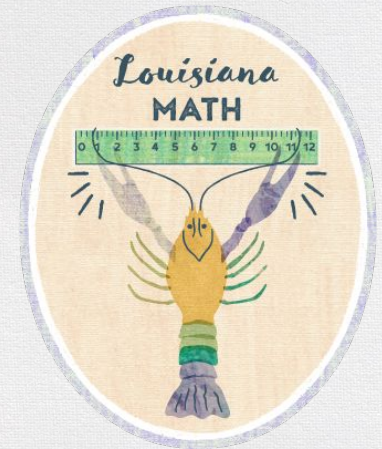
Review Status Report - Currently Posted Tier 1 and 2 Materials						
Review Cycle	Content Area	Tier	Publisher	Title	Status	Impact
2019-2020	ELA	1	Pearson K12 / Savvas Learning	myView Literacy, Grades 3-5	Under Review	TBD
2020-2021	ELA	1	Houghton Mifflin Harcourt	Into Reading, Grades 3-5	Under Review	TBD
2019-2020	ELA INT	1	School Specialty, EPS	S.P.I.R.E. ELA Intervention Grades 3-8	Under Review	TBD
2013-2014	ELA	1	Core Knowledge	Core Knowledge (CKLA) ELA Skills Strand, Grades K-2	Under Review	TBD
2013-2014	ELA	1	Core Knowledge	Core Knowledge (CKLA) ELA, Grade 3	Under Review	TBD
2020-2021	ELA INT	1	Center for the Collaborative Classroom	SIPPS (Systematic Instruction in Phonological Awareness, Phonics, and Sight Words) ELA Intervention Grades 3-8	Ready for Review	TBD
2020-2021	ELA INT	1	Lexia Learning Systems LLC	Lexia Core5 Reading, ELA Intervention Grades 3-8	Ready for Review	TBD
2019-2020	ELA INT	2	Imagine Learning	Imagine Language & Literacy, Grades 3-6	Ready for Review	TBD



New Math Refresh Resources

To support school systems, schools, and teachers in implementation of high-quality instructional materials, the LDOE has released several new resources on the [Math Refresh](#) page. Resources include the following:

- Available now
 - [Accelerating Learning in High School Math](#)
 - [Math Refresh Summer Webinar Series Recording and Slides](#)
 - [Family Math Engagement Library](#)
 - [Updated Louisiana Guides to Implementing adopted high-quality resources](#)
- Coming soon
 - New Foundational Lessons for Accelerating Math Education (FLAME) Resources



Please contact STEM@la.gov with questions.



Principal Webinars for Math and Literacy

The Department is hosting a series of webinars for K-8 principals on key literacy and math initiatives. The 30 minute webinars are scheduled on September 5, October 9, January 8, February 5, and March 8.

- **Webinar Date and Time:** September 5 at 1 p.m.
- **Webinar Link:**
<https://ldoe.zoom.us/j/95898838520?pwd=dE1kVjJxRjFsc2ZDWdNEcVRZNDZvQT09>
- **Webinar Phone Number:** 312-626-6799
- **Meeting ID#:** 958 9883 8520

Recordings of the series will be posted on the Department's [YouTube](#) channel and decks saved on the [monthly calls web page](#).

Please contact STEM@la.gov or louisianaliteracy@la.gov with questions.



DO NOW

New Social Studies Resources

The Department has released a new professional learning resource for social studies teachers and support staff. Teachers in grade 4 and grade 5 now have access to [asynchronous professional learning modules](#) that guide them through the key features of the [Bayou Bridges](#) curriculum, as well as a unit study tool to support initial curriculum implementation.



Please contact classroomsupporttoolbox@la.gov with questions.



DO NOW

Quality Science and Math (QSM) Grants

Louisiana public school teachers in pre-K-12 science, math, and STEM are eligible to apply for the [Quality Science and Math \(QSM\) grants](#).

The [application portal](#) is now open and will close on **September 10**. For additional details and [resources](#) to support grant writing, visit the [QSM website](#).

Please contact gsminfo@lsu.edu with questions.



 Believes



New High School Science Resources

The Department has published new resources to assist systems participating in the OpenSciEd High School pilot with planning.

- [Louisiana Guide to Piloting OpenSciEd Biology](#)
- [Louisiana Guide to Piloting OpenSciEd Chemistry](#)
- [Louisiana Guide to Piloting OpenSciEd Physics](#)

The guides will be updated on a rolling basis as new public units are released.

Please contact STEM@la.gov with questions.



DO NOW

LASTEM Annual Summit



[Registration](#) is now open for the [2023 LASTEM Summit](#) to be held at the Cajundome and Convention Center in Lafayette on October 17.

Please contact lastem@laregents.edu with questions.



DO NOW

Back to School LMS Resources

Microsoft Teams, Google Classroom, and Canvas are key educational technology tools with the primary purpose of supporting and enhancing the learning experience for our students. To support schools and teachers in utilizing best practices in their digital classrooms, the Department has released several new resources on guidance for LMS best practices. Resources include:

- [Back to School: Google Classroom](#)
- [Back to School: Canvas](#)
- [Back to School: Microsoft Teams](#)

Additional resources will be available on the [Digital Learning](#) web page.

Please contact digitallearning@la.gov with questions.



LACUE Annual Conference Call for Proposals



The 2023 LACUE Annual Conference will be held November 28-30 in New Orleans.

- The [call for proposals](#) is now open.
- Proposals to present must be submitted by **September 22**.
- Accepted proposals will be notified by October 13.

Please contact lacue@lacue.org with questions.

Academic Content Contacts

For questions about...	Contact...
ELA Guidebooks	elaguidebooks@la.gov
math, science, and STEM	STEM@la.gov
environmental education	environmentaleducation@la.gov
All other curriculum and instruction	classroomsupporttoolbox@la.gov
Textbooks and instructional materials review, tiered reviews, vendors, and PD vendor guide	louisianacurriculumreview@la.gov
Teacher Leader Advisors	classroomsupporttoolbox@la.gov
World language/immersion	language.acquisition@la.gov
Educational Technology/Digital Learning	digitallearning@la.gov



Diverse Learners Supports

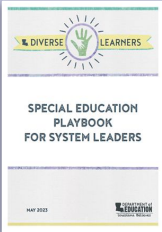




Special Education Playbook for System Leaders

TEACHER LEADER SUMMIT

Official
Launch



FALL 2023

- Release guidance on IEP compliance & funding
- Host a regional tour

SPRING 2024

- Provide ongoing assistance & PD
- Office hours
- Communities of practice

SCHOOL YEAR 24-25

- Pilot support to targeted cohort



Regional Tour

Superintendents, chief academic officers, and special education directors, principals and lead teachers are invited to [register](#) before **September 18**.

Regional Tour Locations	Dates
Rapides: 502 Beauregard St., Alexandria	September 25
Ouachita: 765 Slack Street, West Monroe	September 26
St. Tammany: 2544 Sergeant Alfred St., Slidell	September 27
Lafayette: 2122 N. Parkerson, Crowley	September 28
E. Baton Rouge: 1201 N. 3rd, Baton Rouge	October 3

Please contact diverselearnersupport@la.gov with questions.

SPED Fellow Cohort 4/Aspiring Cohort 2

Fellows	District
Monique Moore	Ascension
Melissa Martarona	Beauregard
Dr. Laquina Dove-Cummings	Caddo
Roderick Meaux	
Adrienne Williams	East Baton Rouge
Jessica White	
Emily Davis	Jefferson
Mary Costello	
Justin Barron	Lincoln
Crystal Brandon	Morehouse

Congratulations to Cohort 4 SPED Fellows



Fellows	District
Faith Moses	Orleans
Dr. Mary Cole-Bush	
Brandon Wilks	Plaquemines
Molly Brunkow	
Alison Gros	St. Bernard
Joseph Cipollone	
Mendy Van Hoven	St. Charles
Senecca Boudreaux	St. James
Venus Simms	St. John the Baptist
Sherelle Guidry	
Alexis Rack	St. Mary
Amanda "Jill" Hunter	Webster

Aspiring Special Education Leaders Academy [application](#) is open through **September 15**.

Please contact diverselearnersupport@la.gov with questions.



Fall Special Education Leader Collaborative Save-the-Date

Who: Special Education Directors

What: Join the Diverse Learners team for a day of special education updates, professional development, and collaboration.

When: October 17, 9:30 a.m. - 3 p.m.

Where: TENTATIVELY - Claiborne Building



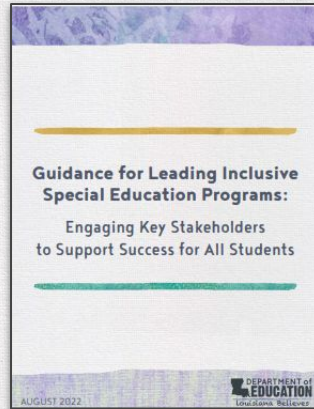
Please contact diverselearnersupport@la.gov with questions.



DO NOW

Local Special Education Advisory Councils (SEAC)

- Compilation of local Special Education Advisory Council [reports](#) is now posted.
- [Act 576](#) details the requirements for local SEACs
- 2023-2024 reports will be due in May 2024 and will detail Council activities throughout the year



Please contact specialeducation@la.gov with questions.



eSER Recent Updates

New Reports:

- Re-Eval Management Roster-Children Turning 9 Report
- Re-Eval Management Roster Summary-Children Turning 9 Report
- Re-Evaluation Management Roster Report
- Re-Evaluation Management Roster Summary Report

K-3 Literacy Screener accommodations are now available.

Refer to [eSER resources](#)

Please contact systemsupport@la.gov with questions.

Reports Actively being worked on:

- LAA1
- Personnel Table
- Evaluation Results Report - Alternate Assessment
- Gifted Talented Summary (Count Report)
- Gifted Talented Referrals Listing
- Gifted/Talented Summary by LEA, Ethnicity and Gender
- Gifted/Talented Listing by LEA, Ethnicity and Gender

Diverse Learner Contacts

For questions about...	Contact...
English Learners	
English Learner instructional support and content	tia.lebrun2@la.gov
English Learner compliance, federal funding, programming	melanie.mayeux@la.gov
Students with Disabilities	
Special education policy, data, reporting	specialeducation@la.gov
Special education instructional support and programming	diverselearnersupport@la.gov

Literacy



Literacy Communities of Practice

This year's monthly Literacy Communities of Practice will provide Literacy Coaches and Literacy leaders with resources and strategies to support teachers with utilizing screener data and high-quality instructional materials through professional and collaborative learning structures.

- **Webinar Date and Time:** Every third Thursday of the month from 9 a.m. - 12 p.m.
- **Webinar Link:** <https://ldoe.zoom.us/j/7632097614>
- **Webinar Meeting ID#:** 763 209 7614



DO NOW

K-3 School Literacy Plans

- Pursuant to R.S. 17:24.9, beginning June 1 and triennially thereafter, each K-3 school shall use data from the literacy assessment in order to develop a school foundational literacy plan for students in kindergarten through third grade.
- Literacy plans shall be posted to the school's website and submitted to the Department.
- The school literacy plan submissions were due to the department on **June 30**, using the designated [jotform](#).

Please contact louisianaliteracy@la.gov with any questions.



Literacy Screener Family Reporting

- Family reporting documents for grades K-3 are now available on the [Literacy Screener landing page](#).
- These reporting documents provide families with students' literacy screener results along with a description of what interventions/supports will be provided by the school and suggestions for activities that can be done at home.
- Pursuant to RS 17:24.10, these documents can serve as the required parental notification for both the screener results and the individual reading improvement plan.
- Information is also provided for families to enroll eligible students in the [Steve Carter Literacy Tutoring Program](#).



DO NOW

Calling All Literacy Tutors

The Steve Carter Literacy Tutoring program is looking for certified teachers who are interested in becoming a tutor. Interested teachers should complete the [Literacy Tutor Interest Form](#). Systems are encouraged to share this information with all K-5 teachers.

To learn more about the Steve Carter Literacy Tutoring program, please contact louisianaliteracy@la.gov.



Educator Development



Save the Date: Teacher Leader Summit 2024

The 12th annual [Teacher Leader Summit](#) will be held May 28-30, 2024 in New Orleans, LA at the Ernest N. Morial Convention Center. Registration and presenter application details will be released this fall.

If you have any questions, please email events@emergentmethod.com.

Summit Extensions 2023-2024

[Summit Extensions](#) are fall and winter half-day professional learning experiences for key school system level leaders to focus on implementation of the [Professional Learning Roadmap](#) which underpins the state's Vision for Success.

[Registration](#) is open. Attendees at the Summit Extension should be the superintendent and the existing school system level instructional leadership team or senior cabinet members. The fall Summit Extensions will be held in three locations across the state.

- November 7: Baton Rouge
- November 8: Lake Charles
- November 9: Shreveport

If you have any questions, please email events@emergentmethod.com.

Compass Information System (CIS) Updates

The deadline to [enter](#) 2022-2023 teacher, counselor, and librarian evaluation data into the [Compass Information System \(CIS\)](#) will follow VAM release in October.

- All non-VAM evaluations can be finalized now.
- VAM teacher evaluations must be finalized following VAM release.

The deadline to [enter](#) 2022-2023 leader evaluations will follow the release of School Performance Scores (SPS) in late fall.

The Compass Information System (CIS) will open for the 2023-2024 school year following VAM release this fall.

Please contact compass@la.gov with questions.

Evaluation Updates

Per Bulletin 130, all evaluators must renew certification annually. The [2023-2024 Rater Reliability Evaluator Training](#) and [companion](#) are available in the [Compass Library](#).

- The [2023-2024 Evaluation Guide for Teachers](#) is also available in the Compass Library.

Systems are encouraged to begin setting [Student Learning Targets \(SLTs\)](#) and conducting observations.

- [Resources](#) for setting SLTs are available in the Compass Library.
- Per Bulletin 130, evaluators and evaluatees must meet to discuss all SLTs.
- Per Bulletin 130, all educators will require two observations for the 2023-2024 school year.

Please contact compass@la.gov with questions.



DO NOW

LEAN Practices for School and System Leaders

The Department, in partnership with A3 Solutions, is developing a cohort for school systems to internally review and streamline teacher work processes to enhance focus on student-centered outcomes through the use of LEAN Practices.

- School Systems will review their own work streams through multi-leveled lenses.
- After completion of the cohort, school systems will be provided resources to further their work.
- More information can be found on the [LEAN Practices Overview Document](#).
- School systems who would like to participate in this **no cost** opportunity should complete the [Interest Form](#) by **September 18**.

Please contact louisianaleaders@la.gov with questions or for more information.



Practicing Principal Webinar: Math Initiatives

The LDOE hosts a monthly webinar series for current school leaders and principal supervisors on best practices in school leadership aligned to the state's priorities. The webinar in August will focus on math initiatives and be led by the Department's Math Division.

Webinar Date and Time: August 28, 1 p.m.

Webinar Link: <https://ldoe.zoom.us/j/97054177103>

Webinar Phone Number: 346-248-7799

Meeting ID#: 970 5417 7103

Please contact louisianaleaders@la.gov with questions.

The New Teacher Experience

The New Teacher Experience is a comprehensive induction program that offers multiple services designed to increase teacher effectiveness, enhance skills, and reduce attrition among beginning teachers. The New Teacher Experience provides both direct supports to teachers and system supports to improve student achievement by improving beginning teacher effectiveness and teacher retention.





The New Teacher Experience Professional Learning Modules

The Department, in partnership with A+PEL, has developed [Professional Learning Modules](#) on topics that are critical for new teacher success. These modules, which are designed to build learning throughout the year, include online asynchronous content followed by an in person learning lab where participants practice and apply these concepts.

This learning opportunity is provided at no cost to systems; however, any travel costs should be covered by the school system. [Registration](#) will close once full.

Please contact laurie.carlton@la.gov with questions.

The New Teacher Experience Affinity Groups

Affinity Groups provide support for beginning teachers across Louisiana through monthly virtual meetings. The goals of these groups include linking new teachers by a common purpose and creating a pathway for novice teachers to collaborate with other new teachers statewide.

There is no cost to join Affinity Groups, but seats are limited. [Registration](#) will be on a first come, first serve basis. Don't let your new teachers miss out on this great opportunity. Registration will close once full.

Please contact laurie.carlton@la.gov with questions.

2024 *New* Teacher of the Year



Phoenix Morel Leblanc

Livingston Parish
Albany Middle School



DO NOW

TOY, NTOY, POY Nominations Portal

The Department recognizes great teachers and school leaders are critical to student success. Annually, the Department honors some of the state's most successful educators through the Louisiana Teacher and Principal of the Year programs, as well as the New Teacher of the Year program. Part of the selection process for naming the district and state-level winners includes recommendations from teachers, principals, district employees, parents, colleagues, and community members. To assist with the process, a nominations portal was created.

The [nominations portal](#) is open now and will close on September 22. Multiple nominations are accepted, as well as self-nominations. Upon portal close, the nomination information will be shared with school systems for their consideration.

For questions regarding Teacher/Principal of the Year contact excellenteducators@la.gov.
For New Teacher of the Year contact Laurie.Carlton@la.gov.





Mentor and Resident Funding

In the 2023-2024 academic year, the data collection for Mentor compensation will take place using a similar process to what was used in 2022-2023. Those unable to join the Fall 2023 Mentor and Resident Funding call to review the funding eligibility and process should review the posted [PowerPoint deck](#).

School systems must submit all required data no later than **October 20** in EdLink. All certificates required (Practitioner License, Resident license, Mentor credential or waiver) must be issued by **October 1** in order to be eligible for funding.

Please contact believeandprepare@la.gov with any questions.



Mentor Waiver

At the April BESE meeting, the Board approved a waiver for the Mentor policy for the 2023-2024 school year. Mentor teacher waivers will be granted on a case-by-case basis through the application process established by the LDOE and at no fee to the applicant, school system, or teacher preparation provider. The 2023-2024 Mentor Waiver [application](#) is currently open.

[Mentor Waiver Applications](#) should be created by the **system leader** responsible for resident placement and/or Mentor recruitment and support. The [Mentor Credential Waiver Application guide](#) provides step by step directions on the application process. Mentor waivers must be issued by **October 1** for Mentors to be eligible for funding.

Please contact believeandprepare@la.gov with any questions.



The [Louisiana Pre-Educator Pathway](#) is a Grow Your Own initiative focused on high quality early career development for the next generation of Louisiana's educators. In the 2023-2024 school year, a series of supports will be offered to support Louisiana school systems in the development, implementation, and expansion of the Louisiana Pre-Educator Pathway.

- [Pre-Educator Pathway Resource Library](#)
- [System Lead Professional Learning Community](#)
- Grow Your Own Learning Visits

Details and reminders about all supports will be shared through the [Pre-Educator Pathway Contact List](#).

Please contact believeandprepare@la.gov with questions.



BESE Tuition Program for Teachers: Applications for Spring and Summer 2024

The BESE Tuition Program for Teachers provides tuition funding for certified and currently employed Louisiana classroom teachers of state-approved public or nonpublic schools. Selected classroom teachers are eligible to enroll in courses at regionally accredited colleges or universities in Louisiana.

Online applications for coursework funding for the spring and summer 2024 semester:

- Application opens **September 4**
- Application closes **October 10**

The application and program details can be found on the [Continuing Education Opportunities for Educators](#) page. For questions about the BESE Tuition Program for Teachers, visit the [Frequently Asked Questions](#) page or contact believeandprepare@la.gov.



DO NOW

Teacher Exit Survey

The Teacher Exit Survey data collection period is now open. Data should be submitted through teachlouisiana.net for the 2022-2023 school year. [Instructions](#) on how to complete this process can be found on teachlouisiana.net.

Data should be submitted by **September 15**.

Please contact donna.baudoin@la.gov with questions.

Associate Teacher Program

Under [ACT No. 99](#) of the 2023 Regular Legislative Session, the State of Louisiana now allows schools to hire candidates holding an associate's degree who are enrolled in a teacher education preparation program to serve as a teacher of record. **The authorization for the associate teacher to be a teacher of record is issued by the LEA, not the LDOE.**

To be eligible for the Associate Teacher Program, the candidate must:

- Have an associate's degree from an accredited college or university.
- Be continuously enrolled in an undergraduate teacher education program at an accredited college or university for the purpose of obtaining a bachelor's degree.
- Be at least twenty-five years of age.

Please reach out to believeandprepare@la.gov with any questions.



School Improvement





IN THE FUTURE

School Support Institutes Session #1

Dates	Cohort Locations
September 11	<i>Monroe Cohort:</i> University of Louisiana Monroe, Bayou Pointe, 1 Warhawk Way, Monroe, LA
September 12	<i>Shreveport Cohort:</i> Shreveport Convention Center, 400 Caddo Street, Shreveport, LA
September 13	<i>Lafayette Cohort:</i> University of Louisiana at Lafayette, Student Union Building , 620 McKinley Street, Lafayette, LA
September 14	<i>Baton Rouge Cohort:</i> <ul style="list-style-type: none">● Observation and Feedback Pathway (all parishes except East Baton Rouge), ILT, TC & Literacy Pathways: The Cook Hotel and Conference Center at LSU, 3848 W. Lakeshore Dr, Baton Rouge, LA● Observation & Feedback Pathway (East Baton Rouge only) and Pedagogy of Potential Pathway: LSU Student Union, 310 LSU Student Union, Baton Rouge, LA

Please see the [SSI logistics page](#) for detailed venue, parking and pre-work information.



IN THE FUTURE

School Improvement Best Practices Trainings

Foundational training in ILT and Teacher Collaboration will be delivered by NIET during the Fall of 2023.

- ILT & Teacher Collaboration Level 1 & 2 trainings are offered both virtually and on-site at regional locations from August through October.
- Level 1 & 2 trainings are appropriate for leaders who have not completed this foundational training, including new school leaders, ILT members, and teacher leaders who facilitate Teacher Collaboration sessions.
- These trainings are available at no cost to both labeled and non-labeled schools.

Please visit the [NIET Best Practices Training](#) site for session schedules and to register.

Please contact schoolimprovementdivision@la.gov with questions.



Certification



Certification Evaluation Updates

During the 2023 Legislative Session, Act 63 provides for the crediting of evaluations in a variety of settings towards the maintenance of certification. Act 63 allows for the use of successful evaluations in the following settings:

- Out-of-State (OS)
- In-state nonpublic
- Contracted or third party educators
- Allows for 'mixing' of evaluation types

Updates regarding these changes are included in sections 103, 507, and 519 of the proposed revisions for Bulletin 746 being heard at August BESE.

Please contact certification@la.gov with questions.



Call Summary



Key Deadlines & Action Steps

August	<ul style="list-style-type: none">● August: Register now for the Math Refresh Regional Tour● August: Registration is now open for the 2023 LASTEM Summit● August: Register now for for the Regional Tour: Special Education Playbook for System Leaders● August: Register now for the LATM and LSTA joint conference● August: Registration for the New Teacher Experience will close once full● August 28: Proposal submission deadline for interested LATM/LSTA conference presenters
September	<ul style="list-style-type: none">● September 1: Recommended deadline for applying for mentor waiver or credential● September 10: Quality Science and Math (QSM) Grants application portal closes● September 11-14: School Support Institutes Session #1● September 15: Teacher Exit Survey data due in Teach Louisiana portal● September 15: Aspiring Special Education Leaders Academy application due● September 18: LEAN Practices Interest Form due● September 22: TOY, NTOY, and POY nomination portal closes● September 22: Call for Proposals to present at the LACUE Annual Conference due● September 29: Early bird registration for the LATM/LSTA conference closes
October	<ul style="list-style-type: none">● October 1: All Mentor and resident licenses must be issued to qualify for funding● October 10: BESE Tuition Program for Teachers application closes● October 17: Special Education Leader Collaborative● October 20: Mentor and resident data is due in Edlink for 2023-2024 funding● October 27: LATM/LSTA conference re-registration rate and mail-in payment postmark deadline

Upcoming Webinars & Calls

Month	Date, Time, Title and Zoom Link
August	<ul style="list-style-type: none"> ● August 22, 10 a.m. - 11 a.m.: Mentor and Resident Funding call ● August 28, 1 p.m. - 2 p.m.: Practicing Principal Webinar: Math Initiatives
September	<ul style="list-style-type: none"> ● September 5, 1 p.m.: Monthly Principal Webinars: Math and Literacy ● September 12, 9 a.m.: Leader Support for Zearn Implementation Webinar ● September 21, 9 a.m. - 12 p.m.: Literacy Communities of Practice Webinar ● September 25, 1 p.m - 2 p.m.: Practicing Principal Webinar: Social Studies Updates
October	<ul style="list-style-type: none"> ● October 9, 1 p.m.: Monthly Principal Webinars: Math and Literacy ● October 19, 9 a.m. - 12 p.m.: Literacy Communities of Practice Webinar ● October 23, 1 p.m. - 2 p.m.: Practicing Principal Webinar: Accountability Updates
November	<ul style="list-style-type: none"> ● November 16, 9 a.m. - 12 p.m.: Literacy Communities of Practice Webinar ● November 27, 1 p.m. - 2 p.m.: Practicing Principal Webinar: Principal Strategies featuring POY Finalists

Support & Resources

- [School System Support Calendar](#)
- [ELA Guidebooks 3-5 \(2022\) Pilot Feedback Report](#)
- [Google Sheets Updates to Save Time](#) includes information on three Sheets features, along with additional tutorials
- [IMR Weekly Report](#)
- [Comprehensive Tiered Report](#)
- [Archived Tiered State Reviews](#)
- [Archive Dates for Tier 1 & 2 Reviews](#)
- [Pre Educator Pathway Resource Library](#)
- [New Teacher Experience webpage](#)
- [Differentiated Compensation Guidance](#)
- [Staffing and Scheduling Guidance](#)
- [Student Learning Target \(SLT\) Guidance and Sample Templates](#)
- [EDLink 360 Support](#)



Reminders & Repeats





Reminders and Repeats: Academic Content





New Development from inquiryHub

inquiryHub Biology is working on a new version of the units in [OpenSciEd High School!](#)

Original unit materials will continue to be freely available through [University of Colorado Boulder](#). New unit development will be published on the [OpenSciEd website](#).

For more information on the new development, contact STEM@la.gov.



DO NOW

New Math Refresh Resources

New resources have been posted to the [Math Refresh Library](#).

- [Accelerating Learning in High School Math](#) points high school teachers to resources available to support addressing unfinished learning with high school students in tutoring or classroom instruction.
- The [Eureka Math Transition FAQ document](#) includes answers to frequently asked questions from teachers and leaders in response to the recently announced archiving of the original Eureka Math (copyright 2013) program's Tier 1 status.

Please contact STEM@la.gov with questions.



New Family Math Engagement Library

As part of the [Louisiana Math Refresh](#), resources are now available in the [Family Math Engagement Library](#).

Grab and go resources are available to support families and caregivers as they support students' math learning.

Please contact STEM@la.gov with questions.





Social Studies Curriculum Development

[Bayou Bridges: A K-8 Louisiana Social Studies Curriculum](#) will contain

- unit plans and daily lessons,
- student and teacher-facing materials,
- engaging primary sources,
- formative and summative assessments, and
- 100% alignment to the 2022 K-8 Louisiana Student Standards for Social Studies as well as the criteria on the 2022-2023 IMR Rubric.



Please contact classroomsupporttoolbox@la.gov with questions.



IN THE FUTURE

Social Studies Curriculum Development

The Department is excited to announce that we have partnered with [Core Knowledge](#)[®] to create Bayou Bridges: A K-8 Louisiana Social Studies Curriculum.

- The first phase of development began in December 2022 and materials for grades 4-5 will be available by Spring 2023 for piloting in Fall 2023.
- The complete K-8 Louisiana Social Studies Curriculum will be available for implementation by June 30, 2024.
- More details about this partnership and future release dates will be announced via this call and future newsletter communications.

Please contact classroomsupporttoolbox@la.gov with questions.



DO NOW

K-2 ELA/Literacy Instructional Materials

The LDOE is continuing to examine instructional materials for changes in alignment resulting from [Act 517](#). As materials are being re-reviewed for compliance with [Act 517](#), systems should do the following:

- Review the [Act 517 Guidance](#) and assist their teachers and leaders in adhering to the policy.
- Engage in a local review process of their curriculum materials to ensure that they are utilizing materials that comply with [Act 517](#).
- Select new instructional materials and professional learning during the current Super App cycle for implementation during the 2023-2024 school year.

Please contact elaguidebooks@la.gov with questions.



Reminders and Repeats: Diverse Learners Supports





Strong Foundational Literacy Skills in Grades 4-8

- Educators, grades 4-8, can still register for LDOE's [free literacy pd modules](#) aligned to the science of reading.
- *Module 1: Understanding the Science of Reading*
- *Module 2: Exploring Phonics and Advanced Word Study*
- *Module 3: Creating Fluent Readers*
- *Module 4: Developing Vocabulary*
- *Module 5: Increasing Reading Comprehension*
- Modules will be available through January 2024.
- [Registration](#) is still open.

Please contact diverselearnersupport@la.gov with questions.





IN THE FUTURE

IDEA ARP Funding Expiring September 30

- School systems should ensure they are drawing down their IDEA ARP funds included in the Achieve! application in eGMS.
- The deadline to spend IDEA ARP funds is **September 30**.



Reminders and Repeats: Literacy





K-3 School Literacy Plans

- [School literacy plans](#) must be posted to school websites by **June 1**.
- Bulletin 741 (outlined in [17:24:10](#)) Each school shall use data from the literacy screener in order to develop and submit to LDE the school foundational literacy plan for students. Each plan shall include
 - the amount of time to be devoted daily to foundational literacy skills and a description of how the instructional time will be utilized;
 - a list of ELA textbooks and instructional materials adopted by the school;
 - a description of the interventions and supports available to students identified as having literacy skills below grade level; and
 - description of the professional development in foundational literacy skills instruction provided to K-3 teachers.

Foundational Skills Lessons for Grades 3-5

The third units of Foundational Instruction for Reading Excellence (FIRE) lessons for grades 3-5 have been posted in the [Literacy Library](#). FIRE is an instructional resource designed to support teachers in providing students advanced reading foundational skills in grades 3-5. Each unit consists of 40 quick lessons and brief student activities focused on either spelling, grammar, or morphology - skills that are essential for proficient reading and writing. Lessons can be taught concurrently with any other ELA knowledge-building curriculum as part of whole-group core instruction.

[Grade 3 Unit 3 - Teacher's Guide](#)

[Grade 3 Unit 3 - Student Activity Book](#)

[Grade 4 Unit 3 - Teacher's Guide](#)

[Grade 4 Unit 3 - Student Activity Book](#)

[Grade 5 Unit 3 - Teacher's Guide](#)

[Grade 5 Unit 3 - Student Activity Book](#)

Foundational Skills and Content Literacy Support for Grades 3-12

- Live webinars providing foundational skills instructional support and content literacy support for 3-12 grade teachers are underway and past sessions are available in the [Literacy Library](#).
 - [Schedule of Sessions](#)
 - Sessions on foundational skills support in grades 3-12 explore how to determine a starting point using data, conducting fluency and skills probes, and how to provide instructional support to struggling readers based on individual needs.
 - Content literacy support sessions guide teachers through the use of resources to support comprehension across all content areas.



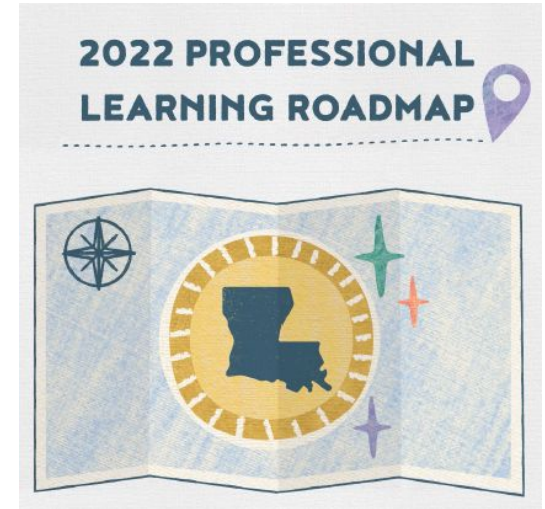
Reminders and Repeats: Educator Development



Professional Learning Roadmap

A key component of overall school system strategic planning is the implementation of a comprehensive professional learning plan.

The [Professional Learning Roadmap](#) intends to guide and support school system and school leaders in their implementation of essential professional learning structures: school system instructional leadership team, school instructional leadership team, and teacher collaboration.



Mentor and Content Leader Training

As a reminder all CIR schools must have a trained Mentor, ELA content leader, and math content leader. School systems recently received notification regarding their Super App funding to support this work.

School systems should use the [Mentor and Content Leader Training Vendor Guide](#) to select an approved training program. The guide has been updated to include all newly approved programs.

Please contact believeandpepare@la.gov with questions.

Staffing and Scheduling

School systems may use the [Staffing and Scheduling Best Practices Guidance](#) to assist in making staffing and scheduling decisions aligned to the best practices below for the 2023-2024 school year.

- High-quality core instruction is the foundation.
- Effective literacy instruction is central to student success.
- Students with unfinished learning and diverse learners need extra instructional time.
- Both core instruction and acceleration must be provided by content strong staff.
- Meeting the various needs of students supports academic achievement.
- Access and opportunities should be at the forefront of all these strategies.

Please contact louisianaleaders@la.gov with questions.