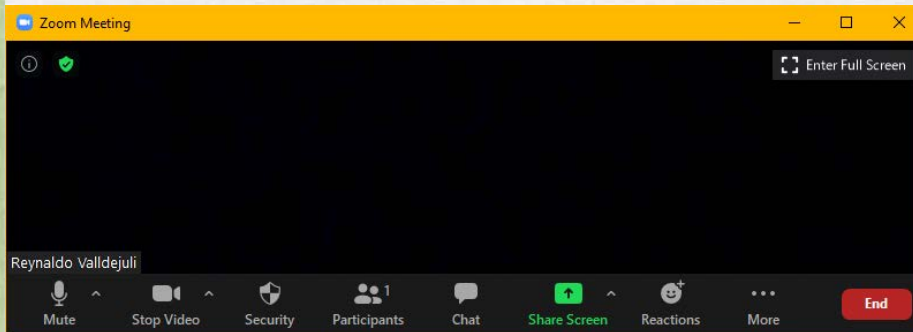


# Zoom Meeting Preparation

- Please make sure your phone or computer is muted to minimize background noise.
  - To do this, hover over the bottom left-hand side of your screen and click “Mute.”
- Please make sure you have turned off your camera to save bandwidth and prevent any connectivity issues.
  - To do this, hover over the bottom left-hand side of your screen and click “Stop Video.”
- Please submit questions during the presentation in the “Chat” function located on the bottom of your screen.



If you require an interpreter or have other accessibility needs for future LDOE meetings, please contact [LDOEcommunications@la.gov](mailto:LDOEcommunications@la.gov).

LOUISIANA DEPARTMENT OF EDUCATION



---

**Nutrition Support Monthly  
Call  
February, 2023**

---

# Agenda

- What's New in Memos and Resources
- Important Due Dates
- Verification
- 2022 NSLP Equipment Grant
- Summer Pandemic Electronic Benefits Transfer (P-EBT)
- Supply Chain Assistance
- School Year 2022-2023 Flexibilities
- Transitional Standards on Milk, Whole Grains and Sodium Final Rule
- Medicaid Demonstration Project
- Training Updates
- Summer 2023 Updates



# Outstanding School Support Employees Award

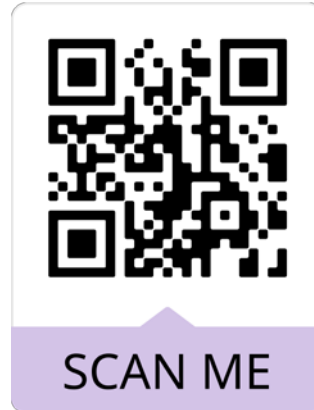
## DEADLINE – FEBRUARY 14, 2023

THE LDOE IS SEEKING NOMINATIONS FOR THE

**2023 OUTSTANDING SCHOOL  
SUPPORT EMPLOYEES AWARD**

Nominees may include teacher aides, paraprofessionals,  
school bus drivers, food service workers, clerical,  
custodial, or maintenance personnel, etc.

**NOMINATE AN OUTSTANDING SCHOOL  
SUPPORT STAFF MEMBER NOW!**



# What's New in Memos and Resources?



-  SFS-23-034 DEADLINE January 31st FY 2022 NSLP Equipment Assistance Grants for SFAs.pdf
-  SFS-23-035 Annual Adjustments to Reimbursement Rates for SFSP 2023.pdf
-  SFS-23-036 REMINDER- Verification Summary Form Due January 10th.pdf
-  SFS-23-037 December 2022 SNAP and TANF loaded to eScholar DirectMatch.pdf
-  SFS-23-038 Outstanding School Support Employees Awards.pdf
-  SFS-23-039 December 2022 Medicaid Free and Reduced Lunch files loaded to eScholar DirectMatch.pdf
-  SFS-23-040 February Trainings.pdf
-  SFS-23-041 2023 Summer Food Service Programs Survey Due February 3rd.pdf
-  SFS-23-042 Now Available- A Review of the Professional Standards Training Tracker Tool Recording.pdf
-  SFS-23-043 Determining Eligibility for Severe Need Reimbursement for SBP and the Two Cent Diff. for NSLP in SY 23-24.pdf
-  SFS-23-044 Louisiana Team Nutrition Culinary Trainings Registration is Open.pdf
-  SFS-23-045 New and Updated! Discover MyPlate Nutrition Education for Kindergarten.pdf
-  SFS-23-046 USDA and Southern University Community Listening Session on Health & Nutrition.pdf
-  SFS-23-046 Virtual Discussion on Healthy School Meals with USDA Secretary Vilsack on Feb. 3rd.pdf

## **SFS-23-034: 2022 NSLP Equipment Assistance Grants for SFAs** **Application Period Closed January 31, 2023**

- A total of **\$1,383,009** has been awarded by FNS to Louisiana for administration and distribution to eligible SFAs through competitive award as part of the 2022 NSLP Equipment Grants for SFAs
- Initial funding was through the Consolidated Appropriations Act, 2022
- Additional funding was later awarded to Louisiana through the American Rescue Plan Act
- **Open Application Period Closed: January 31, 2023**
- SFAs were eligible to apply for up to \$24,000 per piece of equipment and per eligible site
- Awards will be emailed to SFAs by a target date of February 24, 2023

# SFS-23-035 Annual Adjustments to Reimbursement Rates

- The annual adjustments to the reimbursement rates for meals served in the Summer Food Service Program for Children for calendar year 2023 have been released.
- The new rates reflect an increase in the SFSP reimbursement according to changes in the Consumer Price Index, as required under the Richard B. Russell National School Lunch Act.
- The notice is published in the Federal Register at: [Click here for Federal Register: Summer Food Service Program 2023 Reimbursement Rates](#) or access the [pdf at 2023-00002.pdf \(govinfo.gov\)](#)
- The USDA FNS public website also provides these links at USDA.gov under [Summer Food Service Program - 2023 Reimbursement Rates | Food and Nutrition Service](#)

# Verification Summary Form

- The Verification Summary Form was due on January 10, 2023
- If you have been contacted by State agency staff to make corrections, please submit those corrections as soon as feasible.
- Please refer to memo SFS-23-033 Verification Resource for guidance on how to complete the form based on your school district designation and CEP participation.
- As reminded, this year, all school types are required to report the number of free and reduced price Medicaid Direct Certification results as of October 31st.
- For RCCI without day students, zero (0) is reported in both areas.



## SFS-23-039 December 2022 SNAP / TANF Loaded to eScholar DirectMatch

- Please be aware that the December SNAP and TANF data have been loaded to eScholar DirectMatch.
- The LDOE ran the statewide SNAP and TANF matches for all school districts (public and non-public).
- Districts should resolve any near matches in the batches below:
  - SNAP batch # 4152
  - TANF batch # 4149
- For assistance, please email [Jayanthi.Sothirajah@la.gov](mailto:Jayanthi.Sothirajah@la.gov)

# SFS-23-039 December 2022 Medicaid Free and Reduced Lunch files loaded to eScholar DirectMatch

- The December Medicaid Free Lunch and Medicaid Reduced Lunch data has been loaded to eScholar DirectMatch.
- The LDOE ran the statewide Medicaid Free Lunch and Medicaid Reduced Lunch matches for all school districts (public and non-public).
- Districts should resolve any near matches in the batches below:

Medicaid Free Lunch batch # 4212 •

Medicaid Reduced Lunch batch # 4211

For assistance, please email  
[Jayanthi.Sothirajah@la.gov](mailto:Jayanthi.Sothirajah@la.gov)

# Streamlining Program Requirements and Improving Integrity in the SFSP: Webinar Recording

- The recording of the September 21, 2022, Streamlining Program Requirements and Improving Integrity in the Summer Food Service Program (SFSP) Final Rule webinar is now available for all Child Nutrition Program operators.
- The PowerPoint slide deck from the webinar is also available. Both links can be found on the FNS website at: <https://www.fns.usda.gov/sfsp/streamlining-summer>.

# SFS-23-041 Summer Food Service Program 2023 Survey

Many children rely on school meals, so they do not go hungry.

**Nutrition Support wants to hear about your plans to keep kids fed over the summer months, when school is out!**

- Please use the QR code on this slide to complete the Summer 2023 Survey with using a smart phone now!
- The State agency has received great response so far, so please join our efforts to keep kids fed, healthy and happy over the summer months! Input from you makes a big difference in the Summer Programs!



## SFS-23-042 Become a Professional Standards Tracking Tool Pro!

- The “Become a Professional Standards Tracking Tool Pro” Webinar Recording is Now Available!
- This informational webinar reviews basic features, including how to manage employee profiles, log trainings, and print certificates.
- Highlights include some of the latest updates to the tool, such as deactivating and reactivating employee profiles, bulk upload of trainings and employee profiles, and the new job title categories.
- This tool is a free and is a voluntary online tool developed by USDA to assist school nutrition professionals in keeping track of their annual required training hours.
- The recording is available with either English or Spanish captions on Team Nutrition’s website.

English captions: <https://www.fns.usda.gov/tn/review-professional-standards-training-tracker-tool>

Spanish captions: <https://www.fns.usda.gov/es/tn/review-professional-standards-training-trackertool>

## **SP 02-2023 Determining Eligibility for Severe Need Reimbursement for the School Breakfast Program (SBP) and the Two Cent Differential Reimbursement for the National School Lunch Program (NSLP) in School Year (SY) 2023-2024**

- This guidance applies to State agencies and school food authorities administering the National School Lunch Program and the School Breakfast Program in SY 2023-2024; and
- Provides clarification on how to determine eligibility for the severe need reimbursement rates for the School Breakfast Program and the two cent differential reimbursement in the National School Lunch Program in SY 2023-2024.
- Schools are eligible for the severe need breakfast reimbursement rates if 40 percent or more of NSLP lunches served to students at school during the second preceding school year were at the free or reduced price rate (42 U.S.C. 1773(d) and 7 CFR 220.9(d)). School food authorities (SFAs) are eligible for the two cent differential reimbursement for lunches if 60 percent or more of the NSLP lunches served in the second preceding school year were at the free or reduced price rate (42 U.S.C. 1753(b)(2)).

# Moving Forward: Guidance for SY 2023-2024

- If a school claimed meals under NSLP for each month from October 2021 through April 2022, the State agency will determine that the school operated the NSLP for all of the 2021-2022 School Year.
- Otherwise, the State agency must use the guidance in upcoming slides for schools that operated SSO in place of NSLP under the Nationwide Waiver, during the 2021-2022 School Year.

## Severe Need Breakfast Reimbursement

- State agencies must use data from at least three claims in SY 2022-2023 to establish eligibility for severe need reimbursement in SY 2023-2024.
- As a reminder, even if a school is participating in the CEP as part of a group, the school's eligibility for severe need breakfast reimbursement must be based on school's individual ISP.
- Applying this guidance to SY 2023-2024:
  - If a CEP school operated NSLP in SY 2021-2022, State agencies must use the school's individual ISP from SY 2021-2022 for the severe need determination in SY 2023-2024. o
  - If a CEP school operated SSO through the Nationwide Waiver during SY 2021-2022, State agencies must use the school's individual ISP from SY 2022-2023 for the severe need determination in SY 2023-2024.
  - For schools that are new in SY 2023-2024 or which do not have at least three months of claims from SY 2022-2023, State agencies may follow [Eligibility for Severe Need Rates for the School Breakfast Program | Food and Nutrition Service \(usda.gov\)](#).



# Two Cent Differential Reimbursement for Lunch

- SFAs that operated the NSLP in all of their schools during SY 2021-2022 have second prior year data available to determine eligibility for the two cent differential reimbursement for SY 2023-2024.
- Therefore, for these SFAs, State agencies must use the percentage of lunches served free or at the reduced price during SY 2021-2022 to determine eligibility for the two cent differential reimbursement for SY 2023-2024.
- For SFAs with one or more sites that operated SSO under the Nationwide Waiver during SY 2021- 2022, State agencies must use data from at least three claims in SY 2022-2023 to establish eligibility for the two cent differential in SY 2023-2024.
- For SFAs that are new to the NSLP in SY 2023-2024 or which do not have at least three months of claims from SY 2022-2023, State agencies may follow [Determining Eligibility for Two Cent Differential Reimbursement in New Schools | Food and Nutrition Service \(usda.gov\)](#).

## SFS-23-044 Louisiana Team Nutrition Culinary Training Registration is Open

- The Louisiana Team Nutrition Festival of Flavors Project, is hosting four Culinary Trainings.
- The trainings will be held in: Lake Charles, Baton Rouge, Monroe and Alexandria in February and March.
- Visit the calendar on the <https://www.louisianafitkids.com> to register
- Contact Cathy Carmichael at [catherine.carmichael@pbrc.edu](mailto:catherine.carmichael@pbrc.edu) or 225-763-2799 with questions.
  - [February 7th Lake Charles](#)
  - [March 14th Monroe](#)
  - [March 16th Alexandria](#)

## SFS 23-045 Discover MyPlate: Nutrition Education for Kindergarten

- Team Nutrition has expanded the set to include additional foods, Spanish-language components, and new materials showing where food comes from.
- Kindergarten teachers and health and nutrition educators can use the standards-based lessons to help kids learn about nutrition while also reinforcing Math, Science, English, and Health Education content.
- School Nutrition Professionals can reinforce key Discover MyPlate messages at school meals.
- Parents/caregivers can use the fun readers, activity sheets, and more to help their child learn about food while practicing reading and math skills.
- Discover MyPlate can serve as a tool for local educational agencies to meet nutrition education goals described in their Local School Wellness Policy. All materials are free and available online at: [fns.usda.gov/tn/discover-myplate-nutrition-educationkindergarten](https://fns.usda.gov/tn/discover-myplate-nutrition-educationkindergarten)

# SFS-23-046 Ascend for Better Health Listening Session



**ASCEND**  
**FOR BETTER HEALTH**

LISTENING SESSION

**BUILDING A HEALTHY  
COMMUNITY TOGETHER!**

Maurice A. Edmond Arena Multi-Purpose Building  
14600 Scenic Hwy, Baton Rouge, LA

**TUES, JAN 31, 2023**  
**9 a.m. - 2 p.m.**

Let's discuss diet-related health disparities  
in our community and ways to combat  
these issues together.

**REGISTER NOW!**

# SFS-23-046 Driving Improvements in Child Health Through School Meals

- You're invited to watch a livestreamed virtual panel discussion with USDA Secretary Thomas Vilsack on driving improvements in child health through school meals.
- This event is open to the press and will be livestreamed on [usda.gov/live](https://usda.gov/live).
- Date: Friday, February 3, 2023
- Time: 12:00 PM EST Location: Online at [usda.gov/live](https://usda.gov/live)

# February 2023 Trainings

**Wednesday, February 8, 2023:** Nutrition Support Office Hours at 1:00pm

**Thursday, February 9, 2023:** Supply Chain Assistance Funds

**Tuesday, February 14, 2023:** Writing Bid Specifications for Food at 1:00 pm

**Thursday, February 16, 2023:** Community Eligibility Provision at 1:00 pm

**Thursday, February 23, 2023:** Meal Denials & Health Inspections at 1:00 pm



## **Important Due Dates for February 2023**

# Important Due Dates: February 2023

FEBRUARY 2023		Escholar Direct Match data available-For further information contact your SIS coordinator
	1	SFA On-Site Monitoring to be complete
	10	<b>January Claim for Reimbursement Due</b> (submitted online - CNP Website - <a href="http://cnp.doe.louisiana.gov">http://cnp.doe.louisiana.gov</a> )
		<p>Reminder: Report <b>Site Health Inspections</b> conducted in January in CNP Website</p> <p>To access the Site Health Inspection link:</p> <ol style="list-style-type: none"> <li>1. Click the green School Food Service tab in the upper right hand corner</li> <li>2. Click the Site Health Inspection link located in the green area on the left side of the screen</li> </ol> <p>Additional instructions can be found on the CNP Website under SFS Resources --&gt; Louisiana's Child Nutrition Program (CNP) Website --&gt; School Food Service Online Forms and Claim for Reimbursement Manual</p>
		<p>Reminder: Report January <b>Meal Denials</b> in CNP website (if applicable)</p> <p>To access the Meal Denial link:</p> <ol style="list-style-type: none"> <li>1. Click the green School Food Service tab in the upper right hand corner</li> <li>2. Click the Meal Denial link located in the green area on the left side of the screen</li> </ol> <p>Additional instructions can be found on the CNP Website under SFS Resources --&gt; Louisiana's Child Nutrition Program (CNP) Website --&gt; School Food Service Online Forms and Claim for Reimbursement Manual</p>



## Monitoring: SBP, NSLP, ASP, FSMC

- ✓ SBP and NSLP Monitoring: Due Prior to February 1<sup>st</sup>
  - ❖ [School Food Authority On-Site Review Checklist](#)
  
- ✓ After-School Snack Program Monitoring: Due in the 1<sup>st</sup> Four Weeks of the Program:
  - ❖ [After-School Snack Program Monitoring Form](#)
  
- ✓ FSMC Monitoring Form for SFAs: Twice per Year:
  - ❖ [After-School Snack Program Monitoring Form](#)

[cnp.doe.Louisiana.gov/DNAMemos/Forms.asp](http://cnp.doe.Louisiana.gov/DNAMemos/Forms.asp)

# Comments on SFS Online Application Revisions

- Sponsor Revision Comments are Now Required for the Schedule A and Other Areas of the SFS Online Application
- Intent: Provide the State Agency with an Overview of Changes and a Justification for the Revisions Submitted
- Advantages:
  - Speeds the State Agency Review and Process for Approving Online Application Revisions
  - Allows the State Agency to Target Areas for Review and Questions to Ensure the Accuracy of Revisions
  - Also Ensures that Changes are Reflective of the Intention of the CNP Supervisor that Made the Revision(s)

# What Will the Revision Comment Section Look Like?

<b>Issues</b>
<ul style="list-style-type: none"><li>Please enter comments justifying the need for a new revision and describing the intended changes. [#11900]</li></ul>
<b>Revision Justification - Justify the need for a new revision by describing the intended changes.</b>
<div style="border: 1px solid black; height: 100px;"></div>
Enter comments here.

SFS Forms Available for Submission for Program Year 2023	
Note: Please <a href="#">click here</a> to print this page for future reference.	
Select	Form Name [Revision Number]
<input type="checkbox"/>	<b>Schedule A [Revision 1] [Status: Unsubmitted]</b>  Schedule A - Revision 1 Please enter comments justifying the need for a new revision and describing the intended changes.



## **Online Applications and Claim Submission for SY 2022-2023**

# 60 Calendar Day Deadline for Claim Submission and Keeping CNP Online Application Data Up to Date

- The 60 calendar day deadline for submitting claims still applies.
- A one time exception is allowed only once every 36 months (3 years)
- Update and make corrections to the CNP Online Application whenever changes occur / as needed

A watercolor illustration of a tree on the left side of the page. The tree has a thick, light green trunk and several branches with dark green, textured leaves. At the base of the tree, there are some purple and green foliage. The background is a light, textured greyish-white. The bottom of the page features a dark green, textured ground line.

# **Summer and Pandemic EBT Provisions in the Consolidated Appropriations Act, 2023**

# Summer and Pandemic EBT Provisions in the Consolidated Appropriations Act, 2023

- [FRAC Summer and Pandemic EBT Provisions in the Consolidated Appropriations Act, 2023](#)
- All states and territories, as well as Indian Tribal organizations that participate in WIC can participate beginning in summer 2024.
- Families will receive at least \$40 a month per eligible child, totaling \$120 per child summer benefit, in 2024.
- Children attending year-round schools are eligible for benefits and the Secretary of Agriculture will establish those guidelines.

# Summer and Pandemic EBT Provisions in the Consolidated Appropriations Act, 2023

- Summer EBT benefits can be used by families to purchase food from retailers approved for participation in the SNAP.
- Benefits will be automatically issued to eligible children who were certified for free or reduced-price meals in the school year **immediately preceding the summer** and must make an application available for children who were not certified for free or reduced-price school meals.
- Additionally, there must be a way for eligible households to opt out of the program.
- The benefits should be used by families during the **summer months**. States are required to remove (expunge) benefits from the EBT card after four months. The Secretary of Agriculture will determine the exact rules on expungement timelines.



# Pandemic EBT

- Pandemic EBT will remain available for both school-age and young children during the summer of 2023.
- Eligible children will receive a \$40 per month benefit.
- Children who are homeschooled or attend school virtually during the 2022–2023 school year due to concerns about the pandemic remain eligible for Pandemic EBT benefits during the school year but are no longer eligible for benefits during the summer of 2023.
- The requirement that states have a school-year plan for children in child care or school age children in order to issue Pandemic EBT benefits for the summer of 2023 was eliminated.
- If the Public Health Emergency Declaration for COVID-19 is extended into the 2023– 2024 school year, then states are eligible to run the Pandemic EBT Program during the time the Public Health Emergency is in place during instructional months.



# Support

## Support Toolboxes

- [Data Manager Toolbox](#)

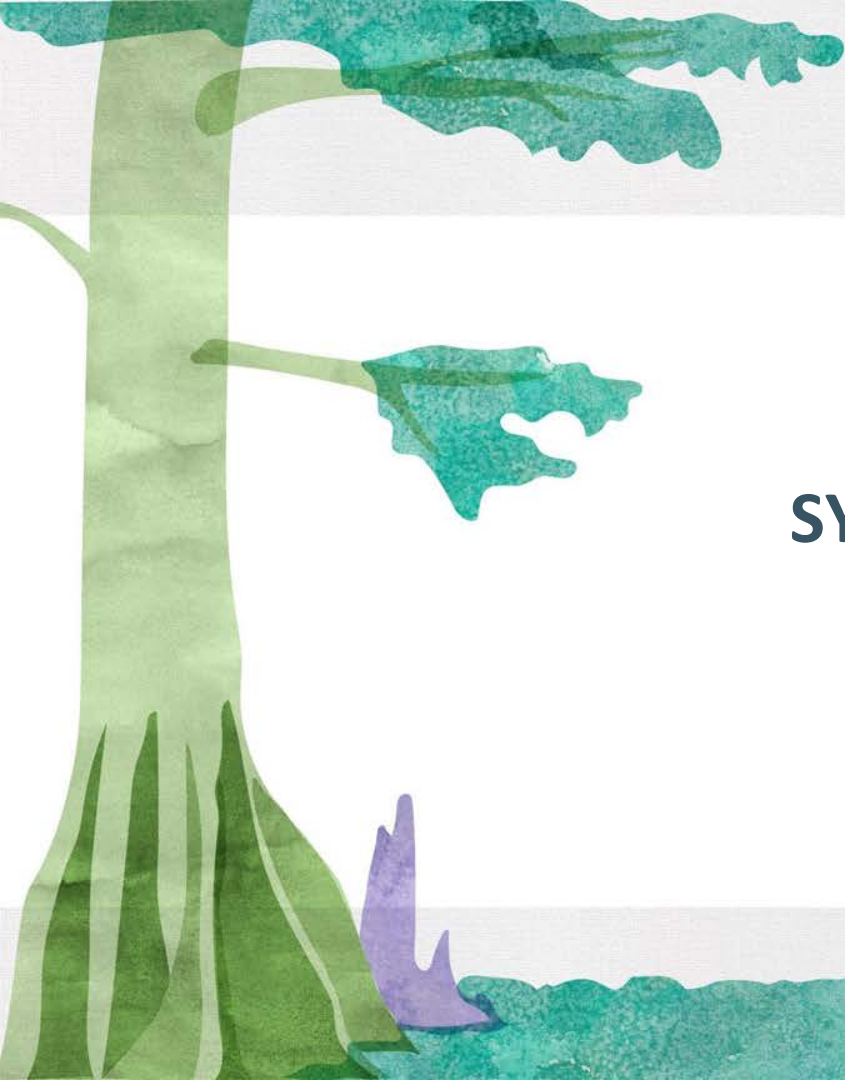
## Helpful Links

- [PEBT website](#)
- [Parent Portal / LA CAFÉ login](#)

## Contacts

- Support Response: [DCFS.PEBTSupport@la.gov](mailto:DCFS.PEBTSupport@la.gov)
- DCFS Helpdesk for Parents: 1-888-524-3578 or 1-888-LAHELPU
- EBT Card Center Helpdesk: 1-888-997-1117





# **SY 2022-2023 Paid Lunch Equity Flexibility**

# PLE Flexibility for SY 2022-2023

## Paid Lunch Equity

- Waives the Paid Lunch Equity requirements for SY 2022-2023
- Pertains to the school lunch prices for SY 2022-2023

A watercolor illustration of a tree on the left side of the page. The tree has a thick, light green trunk and several branches with green leaves. The ground is depicted with a textured green wash, and there are some purple and blue shapes near the base of the tree. The background is a light, textured grey.

# **Transitional Standards on Milk, Whole Grains and Sodium Final Rule**

# Transitional Meal Pattern Standards

## SUMMARY OF CHANGES



### MILK

Schools and child care providers may offer flavored, low-fat milk (1%) in addition to unflavored, low-fat milk and flavored or unflavored nonfat milk<sup>1</sup>.



### SODIUM

The weekly sodium limit for school lunch and breakfast will remain at the current level, known as Target 1, for school year 2022-2023. For school lunch only, the limit will decrease marginally (10%) in school year 2023-2024 to put schools on an achievable path toward long-term sodium reduction, which will be addressed in future rulemaking.



### WHOLE GRAINS

At least 80% of the grains served in school lunch and breakfast per week must be whole grain-rich (containing at least 50% whole grains).

# References on Transitional Meal Pattern Standards

- See [Memo SFS-22-90](#) and [Memo SFS-22-91](#) for more information on the Transitional Rule.
- The [slides](#) and [video](#) from the Transitional Standard Training are posted on [LA Fit Kids](#)

# USDA Milk Tip Sheet for CNP Operators

- USDA's Milk Tip Sheet is designed for program operators as a handy and easy-to-use reference on how to credit milk into the meal pattern requirements.

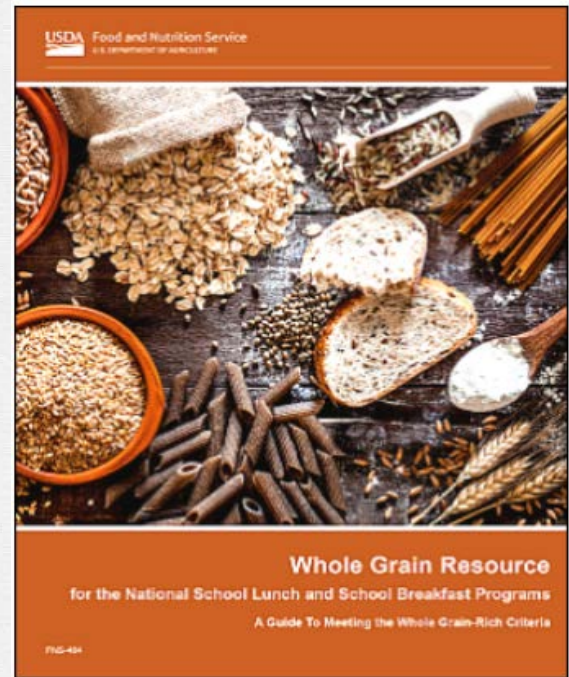
## Availability

- All are welcome to download these materials and make copies. To download the file, please right-click on the link and “**save link as**”.
- [https://fns-prod.azureedge.us/sites/default/files/resource-files/Milk\\_TipSheet.pdf](https://fns-prod.azureedge.us/sites/default/files/resource-files/Milk_TipSheet.pdf)



# Whole Grains

- The [Whole Grain Resource for the National School Lunch and School](#) has been revised with the 2022 final rule for Child Nutrition Programs for Transitional Meal Standards
- Provides examples of various grain products often served in schools and walks the user through the process of determining whether products are whole grain-rich, creditable as enriched, or not creditable





# Medicaid Demonstration Project 2022-2023

# Direct Certification with Medicaid

Louisiana is one of eight states selected to participate in a demonstration project to evaluate the impact of using Medicaid eligibility data to directly certify students for free and reduced-price school meals, that began this school year and continues throughout School Year 2022-2023.

State agencies match school enrollment data with Medicaid eligibility data to identify children who receive Medicaid, or live with a child who receives Medicaid, and whose family income, before expenses and deductions, does not exceed:

- 130 percent of the Federal Poverty Level for free school meal eligibility; or
- 185 percent of the Federal Poverty Level for reduced price meal eligibility

**Please note: not all children receiving Medicaid will receive free or reduced meals.**

# Reduced Priced Children Determined Through Medicaid

Due to differences in household definition and income assessments between programs, some children directly certified for reduced-price meals through Medicaid may have been eligible for free meals if the household applied.

The USDA requires that these households receive notice of the income level used and be offered the opportunity to apply if their income, based on National School Lunch Program (NSLP) eligibility policies, is within the limit for free meals (using the NSLP's current income eligibility guidelines).

# No Medicaid Direct Certification using Handwritten Case Numbers

- Under the Medicaid demonstration, children are not considered to be categorically eligible and may be directly certified only via an automated data matching process with the Medicaid eligibility records.
- Therefore, households are not allowed to handwrite their Medicaid case number on the application or provide “proof” of Medicaid in order for their child to be eligible for free or reduced-price meals.

# Reduced Medicaid Determination: Negative Impact and Extending to Household Siblings

- Students May Not Be Negatively Impacted / Receive Lower Level Benefits Based on Medicaid Match
- If a Student is Matched as Reduced through the Medicaid Determination and they Match as Free through Another Means, the Free Status Remains. For example:
  - Directly Certified Students through SNAP/TANF/FDPIR Remain Free
  - Students Qualifying through a List for Homeless/Migrant/Runaway Status Remain Free
  - Students Qualifying through Foster Care Remain Free
  - Students Qualifying as Free through an Income Application Remain Free
- Medicaid Free and Medicaid Reduced: Extend Benefits to Siblings in the Same Household Whenever it Improves Individual Student Benefits



# Supply Chain Assistance Funds: Third Allocation

# SFS-23-022 News from USDA FNS PartnerWeb: Supply Chain Assistance Webinar Recording

- The recording of the September 26 Program Monitoring and Operational Support Division webinar: Supply Chain Assistance (SCA) Best Practices for State Agencies and School Food Authorities is available for all School Food Authorities and State agency staff.
- The webinar recording is available: [CLICK HERE FOR Supply Chain Assistance \(SCA\) Best Practices for State Agencies and School Food Authorities - YouTube](#)



# Third Allocation of Supply Chain Assistance Funds

Because the underlying conditions fueling supply chain disruptions and other economic uncertainty remain significant in many parts of the country, FNS provided an additional \$471.5 million in SCA funds

State agencies will distribute this third round of SCA funding to eligible School Food Authorities (SFAs) via the same formula used to distribute the first and second rounds of funds.

Much like the Second Allocation of SCA funds, these funds remain limited to the purchase of unprocessed or minimally processed domestic food products.

# Supply Chain Assistance Resources

- Please refer to the following resources for more information:
  1. USDA Memo SP 15-02 [Second Allocation of Supply Chain Assistance Funds](#)
  2. [USDA Questions and Answers regarding Supply Chain Assistance Funds](#)
  3. The [slides](#) and [recording](#) from the March 10th SCA training posted on the [Louisianafitkids.com](#) website
  4. Register for the February 9<sup>th</sup> training on Supply Chain Assistance Funds at <https://www.louisianafitkids.com/Meetings/Home/MeetingRegistration>



## Procurement and FSMC Allowable Costs

# Procurement Updates and Reminders

## Procurement Regulations and SFA Procurement Plan for SY 2022-2023

- Please ensure that all state procurement laws and regulations are followed

## Small Purchase and Micro-purchase Thresholds

- On May 31, 2022, Governor John Bel Edwards signed House Bill 221 (Act 204) into law.
  - Increases the micro-purchase threshold from **\$10,000 to \$30,000**
  - Increases the small purchase threshold from **\$30,000 to \$60,000**
- Normal purchasing guidelines regarding quotes with small purchases still apply
- Effective date: August 1, 2022

# Memo SFS-23-008 Charter Schools Using FSMCs

- Food Service Management Companies: Charges Outside of Allowable Expenses
- CNP Food Service Management Company Contracts are Limited to a Meal Times Rate Contract
- Refer to Section 1 – Scope and Purpose of the Prototype FSMC, Item FF
  - “The charge to the SFA/Sponsor for FSMC’s fee is to be clearly identified in the proposal. Fees imposed by a FSMC outside of this contract may not be paid for with Child Nutrition Funds”.
- Refer to the Proposal Summary and Agreement signed by the FSMC that states:
  - “...The offeror also understands that the FSMC cannot charge any fees other than the meal cost as indicated above for the number of meals served. The FSMC will not charge late fees, charge for meals delivered, etc.”



# CACFP and SFSP Area Eligibility Data

# CACFP and SFSP Area Eligibility Data



- USDA and FNS Released CACFP and SFSP Area Eligibility Data: Effective October 1, 2022
- FNS Mapping Tools Have Been Updated with New Data, Accessible Using Google Chrome or Mozilla Firefox
  - [Area Eligibility Map](#)
  - [Open Data Site](#)
- To learn more about using census data for establishing area eligibility in CACFP and SFSP, See [Memo SP 08-2017, Area Eligibility in Child Nutrition Programs](#)

# Questions

Contact the  
LDOE Division of Nutrition Support at  
[childnutritionprograms@la.gov](mailto:childnutritionprograms@la.gov) or  
225-342-9661

