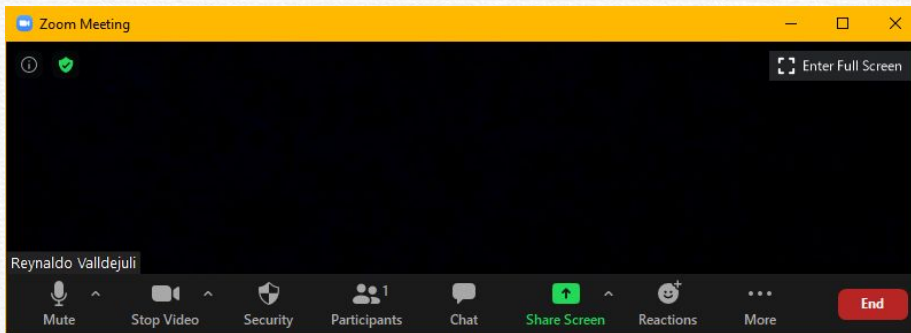


Zoom Meeting Preparation

- Please make sure your phone or computer is muted to minimize background noise.
 - To do this, hover over the bottom left-hand side of your screen and click “Mute.”
- Please make sure you have turned off your camera to save bandwidth and prevent any connectivity issues.
 - To do this, hover over the bottom left-hand side of your screen and click “Stop Video.”
- Please submit questions during the presentation in the “Chat” function located on the bottom of your screen.



NOTICE: In accordance with the Americans with Disabilities Act, if you need special assistance at this meeting please contact Idoecommunications@la.gov.

VISION for **SUCCESS**

Healthy Schools Community of Practice
Monthly Call

September 28, 2023

2 p.m.



Agenda

Topic	Presenter
Welcome/check in	Mike Comeaux
Team Updates	HC Team
Focus Spotlight: Creating School Health Advisory Teams	Stephen Guccione
Announcements	HC Team





School Health Service Provider of the Year Award

Who has positively impacted a student's health?

- [Nominate](#) an outstanding school nurse, behavioral health provider, speech therapist, OT or PT for the 2023-2024 School Health Service Provider Award.
- Nominations will be accepted through October 12.
- More information about the award may be found in the [award overview](#).

Please contact elizabeth.duncan@la.gov with questions.



Medicaid Provider Enrollment

- Federal regulations require states to screen and enroll all Medicaid providers that order, prescribe, or refer beneficiaries.
- Individual provider who orders, refers and/or prescribes Medicaid services, must be documented on claims.
- Expect claim denials on interim bills submitted for reimbursement if OPR provider enrollment requirements are not complete by **December 30**.
- LEAs must input the ordering providers name, their Type 1 (individual) NPI and DK (provider modifier) qualifier on all claims.

For questions about this process please contact andrea.perry@la.gov or call 225-219-7827.



Medicaid Provider Enrollment

The following providers are required to download and submit the [Ordering, Prescribing, Referring Enrollment Packet](#) to enroll

- Physician/Physician Assistants APRN - Clinical Nurse Specialist APRN - Nurse Practitioner
- Physical Therapist
- Speech Language Pathologist
- Audiologist; Optometrist
- Licensed Psychologist (not required for school psychologist)
- Licensed Clinical Social Workers
- Licensed Professional Counselors
- Licensed Marriage and Family Therapist
- Licensed Addiction Counselors

For questions about this process please contact andrea.perry@la.gov or call 225-219-7827.



2022 Medicaid Cost Reports - Due November 30,2023

- **BOTH** an electronic version **AND** a hard copy must be submitted
- Electronic submissions (Excel and PDF versions) should be emailed to: MAC.User@LA.GOV
- Notarized hard copy submission should be mailed to:

Attn: Angelle Johnson
EAG Gulf Coast, LLC
c/o Medicaid Administrative Claiming
8550 United Plaza Blvd Suite 1001
Baton Rouge, LA 70809

Questions regarding the cost reporting process should be directed to Afolasade.Shobamowo@la.gov or Anissa.Young-Ned@la.gov



Updating School District Contacts with LDH

Please contact anissa.young-ned@la.gov with any changes

LEA	Name of Contact	Email Address	Phone #
SBMP Coordinator			
Business Manager			
Time Study Contact			



Medicaid - School Based Service Learning Collaborative

A series of 5 webinars to review foundational requirements of Medicaid funding for school health service providers. Each session is small group discussion reviewing current program services, documentation requirements, reimbursement, transportation and audit processes.

[Register](#) for an upcoming back to school session.

Please contact elizabeth.duncan@la.gov with questions.



Health and Physical Education Updates

2023 LAHPERD Convention

- **Date:** November 1-3
- **Location:** Crowne Plaza Hotel and Convention Center
10 at College Drive (Constitution Avenue)
Baton Rouge, LA
- [Registration](#) is currently open.

Contact healthyschools@la.gov for more information.



Healthy Schools Mini Grant Opportunity

Apply for the Healthy Schools Mini-Grant

K-12 schools can apply for up to \$3,000 to increase physical activity for students. 10 schools will be awarded. Funds may support projects such as playground enhancement, implementing active classrooms, and more. Awarded schools will receive technical assistance to complete grant requirements. The deadline to apply is October 16, 2023. Find more information and submit an application on the [Healthy Schools Mini-Grant website](#)

Contact healthyschool@la.gov for more information



Health and Physical Education Updates

- Free Professional Development
 - Topics Include
 - Physical Activity
 - Nutrition
 - School Wellness

Click the link [Healthy Schools Training Krewe - Well-Ahead Louisiana](#) or contact healthyschools@la.gov for more information.

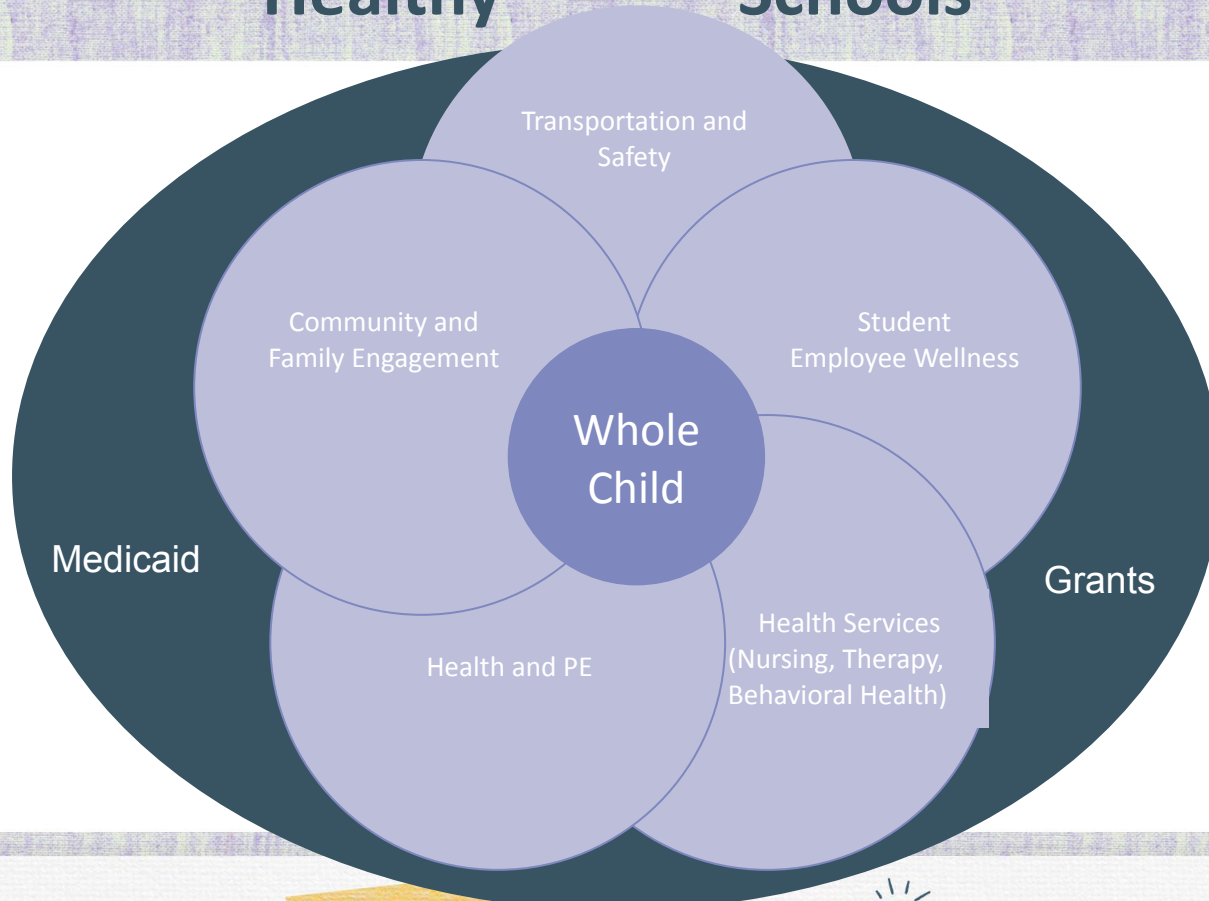




Creating School Health Advisory Teams



Healthy Schools



Alignment with Education Policy

Louisiana Revised Statute 17:17:1

*“Each city, parish, and other local public school board shall establish a **school health advisory council** to advise the board on **physical activity for students, physical and health education, nutrition, and overall student health**. The council may advise the board on issues relative to compliance with school vending machine restrictions, use of physical fitness assessment results, and school recess policies. The council members shall be appointed by the school board and shall include parents of students and individuals representing the community”*



Local Wellness Policy

- A written document that guides a school district's efforts to create healthy and supportive environments that promote student wellness. Applies to each school under its jurisdiction.
- Required for any school district participating in federal Child Nutrition Programs, including NSLP or SBP (Healthy, Hunger-Free Kids Act of 2010).
- Coordinated school health can be integrated into the local school wellness policy and can help put into action several provisions of the Every Student Success Act (ESSA).



Question

Does your District have School Health Advisory Council that advises your local school board on physical activity for students, physical and health education, nutrition, and overall student health?



LDOE Health and Physical Education Survey

- Sixty-eight percent (68%) of schools reported that they have a School Health Advisory Council (SHAC) that advises the local school board on physical activity for students, physical and health education, nutrition, and overall student health



Six Steps to Impactful change



School Health Advisory Council

- Acts collectively to lead, coordinate, and implement school health policies and programs in alignment with the WSCC model.
- Uses the district's Local School Wellness Policy and School Health Index as their roadmaps for ensuring the unique health priorities and needs of their district and school communities are addressed.



Roles and Responsibilities

- Ensure district's local school wellness policy is updated to meet current guidelines, and stays up-to-date on any changes made by the federal and state governments
- Ensure schools, parents and the community are aware of district-level health policies, specifically the district's local school wellness policy
- Ensure schools are meeting the district's wellness policy and make this information available to the public
- Identify gaps in the district's health policies, programs and processes and locate resources to address gaps
- Assist schools with challenges and resources to creating a culture of school health, and helping them celebrate the successes they achieve
- Communicate with the school board on the progress of district and school health improvements



3 Steps to Build a School Health Advisory Council

- Step 1- Build a team
- Step 2- Start Recruiting
- Step 3-Plan a Meeting



Poll Question

Coordinated School Health Components

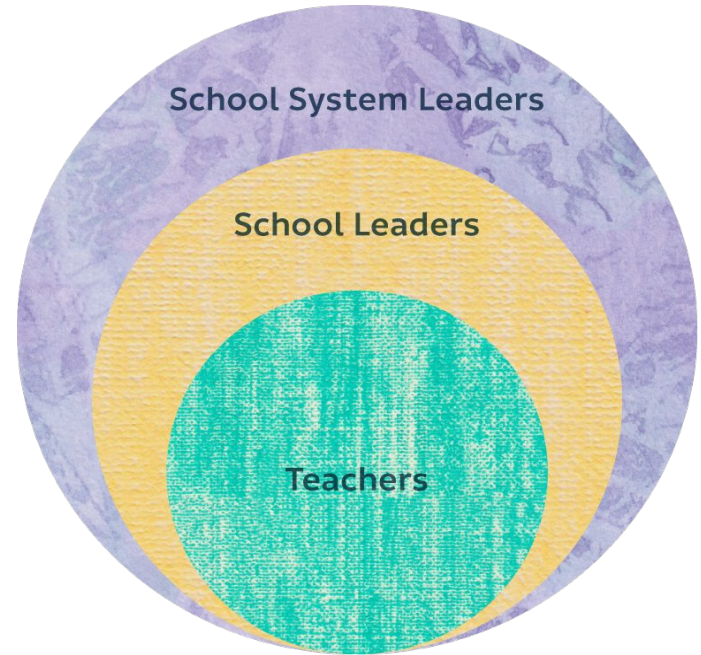
Which coordinated school health component do you represent?

- Health Education
- Physical Education
- Health Services
- Nutrition Services
- Behavioral Health services
- Healthy and Safe school environment
- Health Promotion
- Family and community involvement



Possible Team Members

- Administrators
- School Nutrition
- School Nurse
- PE Teacher
- Parents
- Students
- Community Members
- School Resource Officer
- Metal Health Professionals



Recruitment and Engagement Strategies

- Identify and connect with existing councils, committee, and/or teams
- Be clear about roles & expectations
- Promote the meeting dates & times in advance
- Use various forms of communication to engage (*email, web post, hard copy and electronic letters & flyers*)
- Share your vision
- Reinforce support received (i.e. district, administrators)
- Reinforce the importance of this work for all



Effective Meeting Strategies

- Hold regular quarterly meetings with an agenda
- Define a vision & mission
- Consistent decision making
- Create an action plan to stay focused
- Celebrate Successes
- Give all chance to be heard and participate
- Match partners' participation to Team's goals
- Plan for sustainability
- Share successes, challenges and lessons learned
- Remember, the focus is on our children





Setting Team Action Steps



Sources of Data

- Policy
- Assessment
- Observations and lessons learned



How Do We Determine Needs?

Available Tools

Wellness Policy

Grant Requirements

CDC - School Health Index

AHG Healthy Schools Assessments

Observations/Feedback



Action Planning

- Ideas
- Planning
- Take Action



Action Plan

- Blue-print or To Do list to keep track of work.
- Adheres to district priorities and team goals and can be updated at anytime.

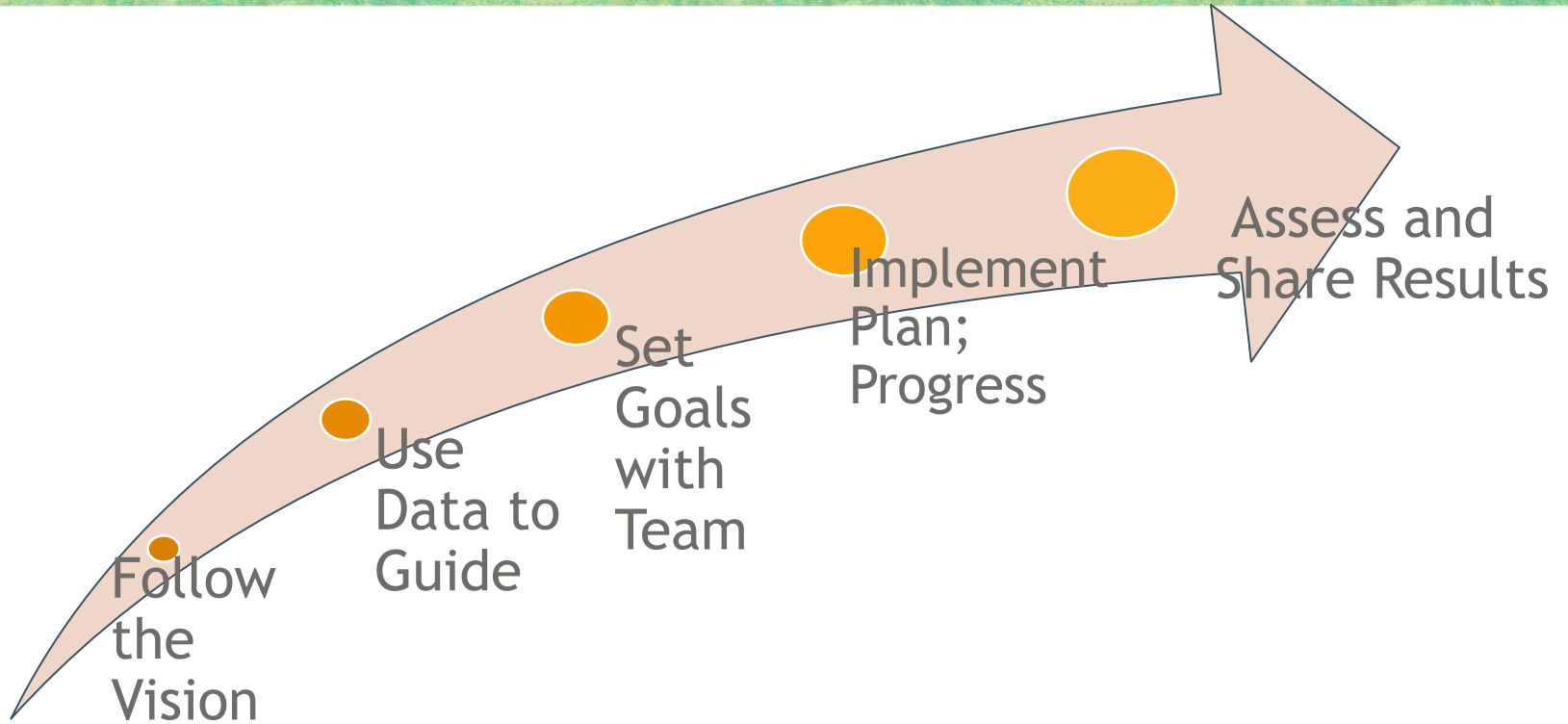


Action Steps and District Policy - They do Intersect

- Student Wellness
- Nutrition
- Fundraising, Celebrations
- Health Education
- Physical Activity
- Physical Education
- Before and After School
- Other Activities that Promote Student's Health
- Employee Wellness
- Family and Community Engagement



Choosing Action Plan Goals



Resources

[SHI | School Health Index | Healthy Schools | CDC](#)

[WellSAT 3.0](#)

[Wellness Policy in Action Tool | Healthy Schools | CDC](#)



Resources

Policy & Environment

School policies determine school environments. Effective wellness policies that support collaboration, implementation and evaluation lay the foundation for healthy school environments.



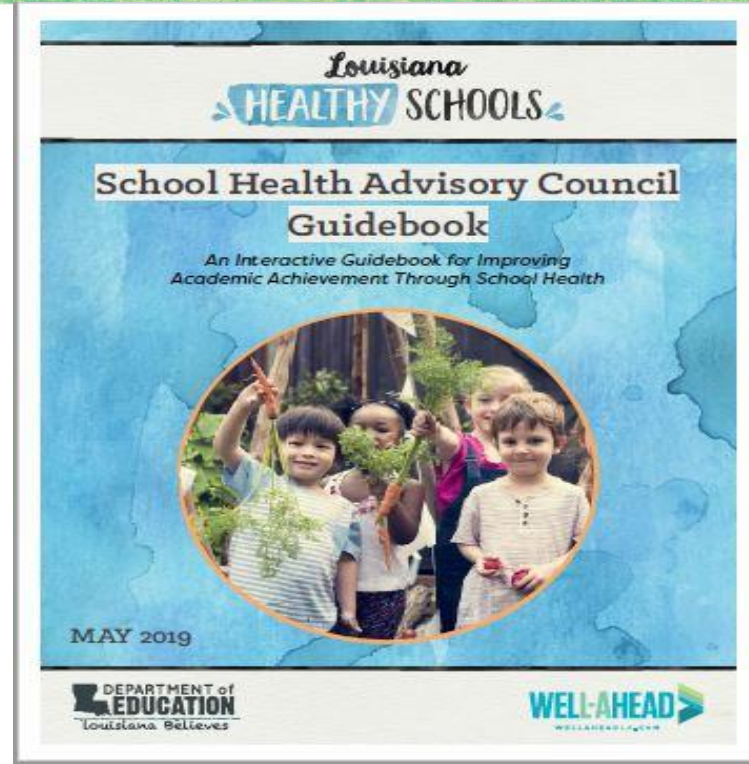
School Wellness Committees

Learn how to build support for healthy policies and practices by forming a school wellness committee



Local School Wellness Policy

Learn how to create or revise a local school wellness policy to support healthy practices in your school or district



Resources and Reminders

- Red Ribbon Week Oct. 23-31
- National Bullying Prevention Week Oct. 16-20
- [2023 Annual Conference on Advancing School Mental Health](#), December 5-7



National School Bus Safety Week

National School Bus Safety Week is October 16-20, 2023

The [National Association for Pupil Transportation](#) offers school bus safety tips all year round.

Contact healthyschools@la.gov for more information.



Safe Schools Week

Safe Schools Week is **October 15-21, 2023**

The [National School Safety Center](#) offers a list of ideas and activities that may be used during this week.

Contact healthyschools@la.gov for more information.



October is National PT Month

- Physical activity is vital for every child's health and quality of life
- Physical therapists help children of all abilities participate and reach their unique potential.



Contact [APTA National Physical Therapy Month](#) for more information



Healthy Communities Team

michael.comeaux@la.gov	Healthy Communities: School Safety, School Health, Transportation, Nursing, Suicide Prevention
stephen.guccione@la.gov	Health/Physical Education, Coordinated School Health Program, Professional Development and Technical Assistance Support
levillia.moore@la.gov	AWARE 2 and Louisiana School Social Work Expansion Grant
elizabeth.duncan@la.gov	School-based Medicaid
erica.gilliam@la.gov	School Health Advisory Councils



Helpful Information (Cont.)

Schedules, access links and information for the Department's webinars can be found in the [LDOE Weekly Newsletter](#) and [School System Support Calendar](#).

For more information, contact healthyschools@la.gov.



Questions?



VISION for **SUCCESS**

**Safe & Healthy Schools Community of Practice
October 26**



**Focus Presentation:
School Safety Site Assessments**