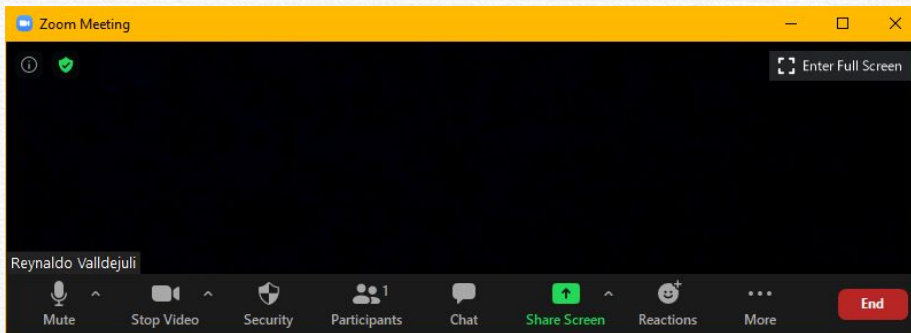


# Zoom Meeting Preparation

- Please make sure your phone or computer is muted to minimize background noise.
  - To do this, hover over the bottom left-hand side of your screen and click “Mute.”
- Please make sure you have turned off your camera to save bandwidth and prevent any connectivity issues.
  - To do this, hover over the bottom left-hand side of your screen and click “Stop Video.”
- Please submit questions during the presentation in the “Chat” function located on the bottom of your screen.



**NOTICE: In accordance with the Americans with Disabilities Act, if you need special assistance at this meeting please contact [Idoecommunications@la.gov](mailto:Idoecommunications@la.gov).**

# **VISION** for **SUCCESS**

Healthy Schools Community of Practice  
Monthly Call

October 26, 2023  
2 p.m.



# Agenda

Topic	Presenter
Welcome/check in	Michael Comeaux
Team Updates	Team
Focus Spotlight: <b>How to Harden and Secure Your Schools</b>	Paul Toups - Louisiana State Police
Announcements	Team



# EPA Clean School Bus

The EPA has announced the [2023 Clean School Bus \(CSB\) Rebate Program](#) and anticipates awarding at least **\$500 million** in rebate funding.

Eligible applicants can apply to receive funding for the purchase of up to 25 zero-emission (ZE) and/or clean school buses, along with ZE charging infrastructure and eligible workforce development costs.

EPA is prioritizing applications that will replace buses serving high-need local education agencies, rural areas, Tribal school districts funded by the Bureau of Indian Affairs and public school districts receiving basic support payments for students living on Tribal land.

Contact [healthyschools@la.gov](mailto:healthyschools@la.gov) for more information.



# Medicaid Provider Enrollment

- Federal regulations require states to screen and enroll all Medicaid providers that order, prescribe, or refer beneficiaries.
- Individual provider who orders, refers and/or prescribes Medicaid services, must be documented on claims.
- Expect claim denials on interim bills submitted for reimbursement if OPR provider enrollment requirements are not complete by **December 30**.
- LEAs must input the ordering providers name, their Type 1 (individual) NPI and DK (provider modifier) qualifier on all claims.

For questions about this process please contact [andrea.perry@la.gov](mailto:andrea.perry@la.gov) or call 225-219-7827.



# Medicaid Provider Enrollment

The following providers are required to download and submit the [Ordering, Prescribing, Referring Enrollment Packet](#) to enroll:

- Physician/Physician Assistants APRN - Clinical Nurse Specialist APRN - Nurse Practitioner
- Physical Therapist
- Speech Language Pathologist
- Audiologist; Optometrist
- Licensed Psychologist (not required for school psychologist)
- Licensed Clinical Social Workers
- Licensed Professional Counselors
- Licensed Marriage and Family Therapist
- Licensed Addiction Counselors

For questions about this process please contact [andrea.perry@la.gov](mailto:andrea.perry@la.gov) or call 225-219-7827.



# 2022 Medicaid Cost Reports - Due November 30,2023

- **BOTH** an electronic version **AND** a hard copy must be submitted/
- Electronic submissions (Excel and PDF versions) should be emailed to: MAC.User@LA.GOV
- Notarized hard copy submission should be mailed to:

**Attn: Angelle Johnson**  
**EAG Gulf Coast, LLC**  
**c/o Medicaid Administrative Claiming**  
**8550 United Plaza Blvd Suite 1001**  
**Baton Rouge, LA 70809**

Questions regarding the cost reporting process should be directed to [Afolasade.Shobamowo@la.gov](mailto:Afolasade.Shobamowo@la.gov) or [Anissa.Young-Ned@la.gov](mailto:Anissa.Young-Ned@la.gov)



# Medicaid - School Based Service Learning Collaborative

A series of 5 webinars to review foundational requirements of Medicaid funding for school health service providers. Each session is small group discussion reviewing current program services, documentation requirements, reimbursement, transportation and audit processes.

[Register](#) for an upcoming back to school session.

Please contact [elizabeth.duncan@la.gov](mailto:elizabeth.duncan@la.gov) with questions.





# VISION for SUCCESS



## How to Harden and Secure Your Schools

Paul Toups, LSP - LA-SAFE  
School Safety Training Coordinator



# Physical Security Protection Strategy

## Perimeter Security:

- Fencing
- Barriers
- Lighting
- Signage
- Security Forces


## Middle Security:


- Access Control
- Intrusion Detection Systems
- Camera Systems
- Key Accountability
- Protective Seal Accountability
- Physical Security Deterrence Measures



## Internal Security:

- Risk Management Procedures
- Threat Monitoring Procedures
- Quarterly Security Meetings
- Security Awareness Training
- Bomb Threat Procedures
- Employee Background Checks
- Contractor Background Checks
- Sensitive Item Inventories
- Annual Security Exercises
- Annual Physical Security Inspection

Perimeter Security: 

Middle Security: 

Internal Security: 



# Perimeter Security

- Fencing
- Barrier
- Lighting
- Signing
- Security Forces



# Fencing

School grounds are properly fenced (approximately 6-8 ft.) to prevent unauthorized entry.





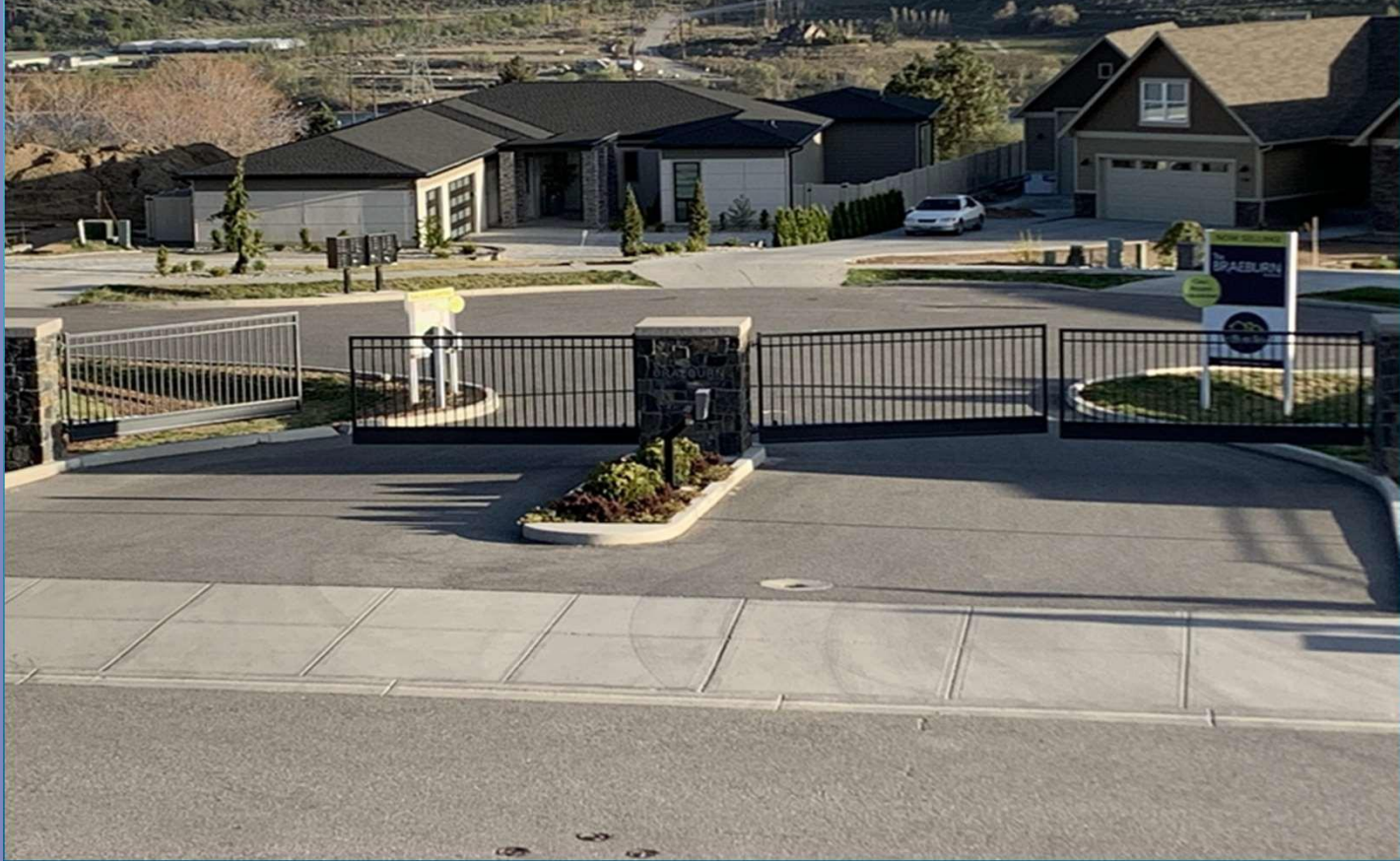
**VISION** for **SUCCESS**



**VISION** for **SUCCESS**



**VISION** for **SUCCESS**



**VISION** for **SUCCESS**





**VISION** for **SUCCESS**



**VISION** for **SUCCESS**



**VISION** for **SUCCESS**



**VISION** for **SUCCESS**



**VISION** for **SUCCESS**



**VISION** for **SUCCESS**



**VISION** for **SUCCESS**



**VISION** for **SUCCESS**





**VISION** for **SUCCESS**



**VISION** for **SUCCESS**



**VISION** for **SUCCESS**



**VISION** for **SUCCESS**



**VISION** for **SUCCESS**

# Lighting

- There is adequate lighting around exterior of building.
- Lighting is provided at entrances and exits.
- Parking lot is lighted properly and all lights are functioning.





EXTERIOR BUILDING AND PATHWAY LIGHTING





**VISION** for **SUCCESS**





**VISION** for **SUCCESS**



**VISION** for **SUCCESS**



**VISION** for **SUCCESS**

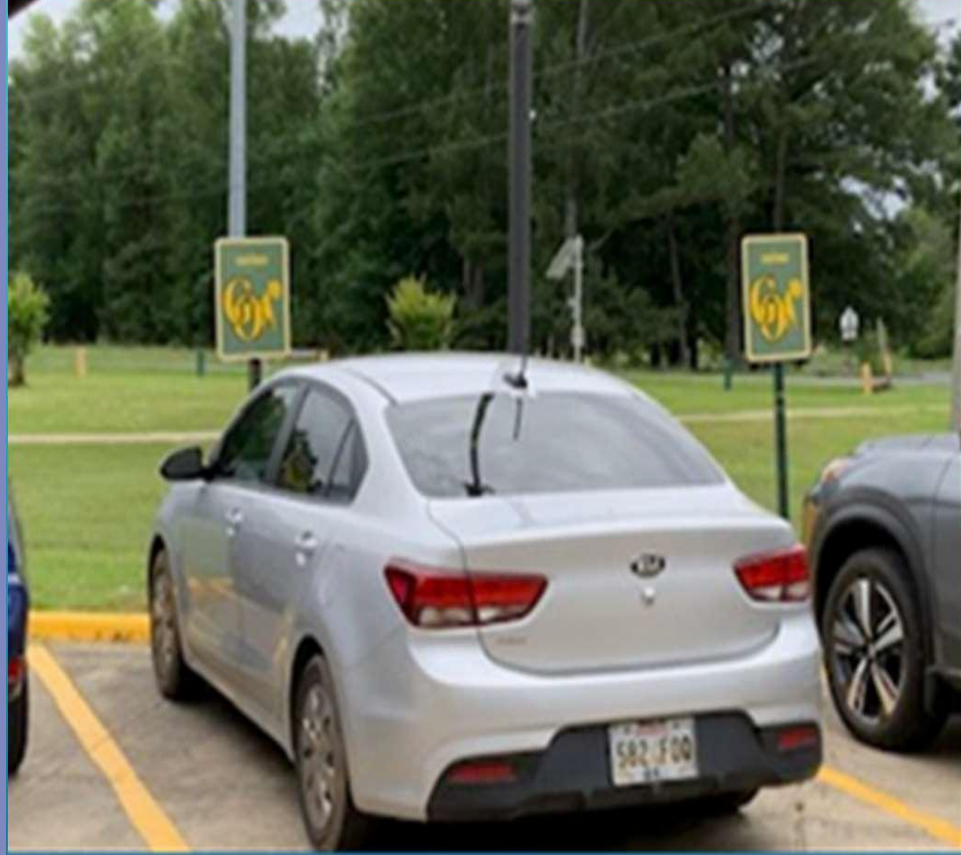
# Single Point of Entry

- There is one clearly marked and designated entrance for visitors.
- Signs are posted for visitors to report to main office through a designated entrance.
- Do all exterior doors have signs requiring visitors to report to the main office to sign in and obtain an I.D. ?





**VISION** for **SUCCESS**



**VISION** for **SUCCESS**

# **ALL VISITORS**

---

**MUST REGISTER AT THE  
MAIN OFFICE PER  
SCHOOL DISTRICT POLICY.**

---

**VIOLATORS OF THIS POLICY  
ARE SUBJECT TO ARREST**









alamy

Image ID: JCWDER  
www.alamy.com



**VISION** for **SUCCESS**

# Student Drop Off and Pick Up is Clearly Defined



# Signage Indicating Surveillance Cameras are Present and Recording



# Middle Security

Access Control

Intrusion Detection Systems

Camera Systems

Key Accountability

Physical Security Deterrence Measures





You will be asked the purpose of your visit for the safety and security of our students and staff.  
Thank you for your cooperation

WELCOME!  
PLEASE PRESS BUTTON  
ON DOOR FOR ADMITTANCE  
DURING SCHOOL HOURS.  
THANK YOU.

**TO ENTER  
THIS BUILDING**

- 1) **PUSH** and release intercom button
- 2) **WAIT** for a response
- 3) **TELL** us how we can help you

**PARKWAY**  
TECHNOLOGY



**VISION** for **SUCCESS**





**VISION** for **SUCCESS**



**VISION** for **SUCCESS**



# Corridors or Open Breezeways at the School

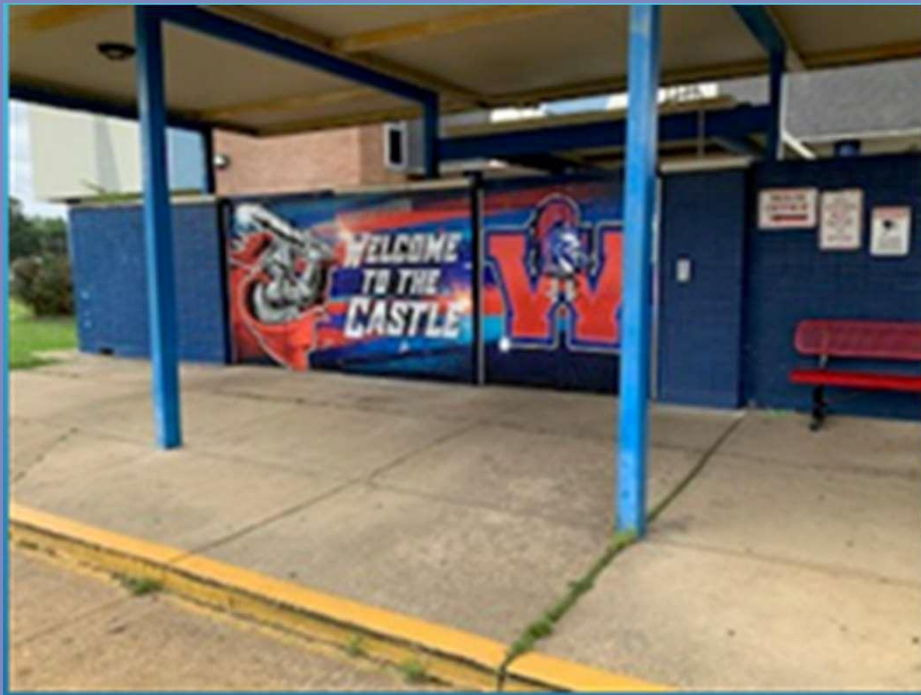




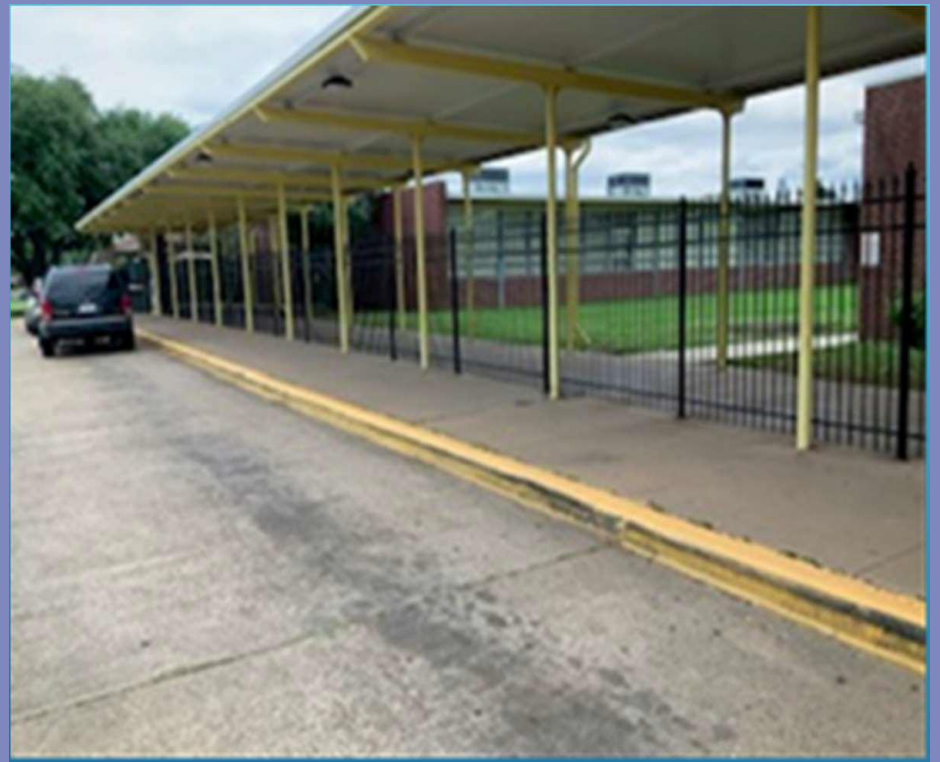
**VISION** for **SUCCESS**



**VISION** for **SUCCESS**



**VISION** for **SUCCESS**



**VISION** for **SUCCESS**

**Tie in Multiple Building, Fencing,  
Security Screening with Doors or Gates**





**VISION** for **SUCCESS**



**VISION** for **SUCCESS**





**VISION** for **SUCCESS**

# Parking

Student/staff are assigned parking stickers/hangtags for assigned parking areas.  
Student access to parking area is restricted arrival/dismissal times.  
Staff and visitor parking has been designated.





# Ground Floor Windows

- No broken cracked panes
- Locking hardware in working order
- Windows are fully functional
- Windows have other security features
  - Wire mesh
  - Security screens
  - Security laminate





**VISION** for **SUCCESS**



**VISION** for **SUCCESS**



**VISION** for **SUCCESS**



**VISION** for **SUCCESS**





**VISION** for **SUCCESS**



**VISION** for **SUCCESS**



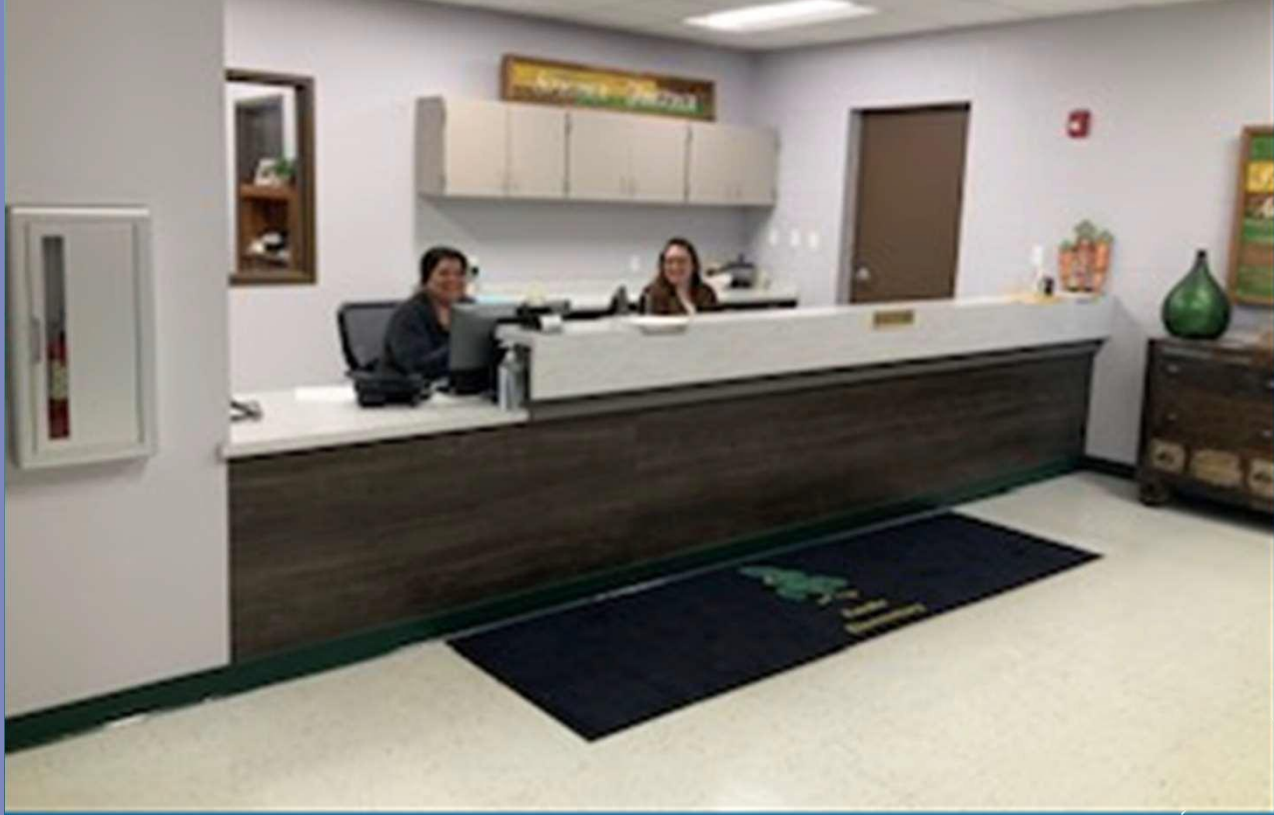
**VISION** for **SUCCESS**



**VISION** for **SUCCESS**



**VISION** for **SUCCESS**



**VISION** for **SUCCESS**



**VISION** for **SUCCESS**



**VISION** for **SUCCESS**



# Internal Security

- Risk Management Procedures
- Threat Monitoring Procedures
- Quarterly Security Meetings
- Security Awareness Training
- Bomb Threat Procedures
- Employee/Contractor Background Checks
- Sensitive Item Inventories
- Annual Security Exercises
- Annual Physical Security Inspections



# Resources

[School Violence Prevention Program](#)

[Cops.usdoj.gov/svpp](https://cops.usdoj.gov/svpp)



# For More Information



**Paul Toups**

**LSP – LA-SAFE – School**

**Safety Training**

**Coordinator**

**Office – (225) 932-5074**

**Cell – (225) 229-8845**

**[Paul.toups@la.gov](mailto:Paul.toups@la.gov)**



# Healthy Schools Resources and Reminders

[2023 Annual Conference on Advancing School Mental Health](#), December 5-7

National School Psychologists week is November 6-10, 2023.

The [National Organization of School Psychologists](#) has developed resources to honor and recognize school psychologists.



# Healthy Communities Team

<a href="mailto:michael.comeaux@la.gov">michael.comeaux@la.gov</a>	Safe and Healthy Schools: School Safety, School Health, Transportation, Nursing, Suicide Prevention
<a href="mailto:stephen.guccione@la.gov">stephen.guccione@la.gov</a>	Health/Physical Education, Coordinated School Health Program, Professional Development and Technical Assistance Support
<a href="mailto:levillia.moore@la.gov">levillia.moore@la.gov</a>	AWARE 2 and Louisiana School Social Work Expansion Grant
<a href="mailto:elizabeth.duncan@la.gov">elizabeth.duncan@la.gov</a>	School-based Medicaid
<a href="mailto:erica.gilliam@la.gov">erica.gilliam@la.gov</a>	School Health Advisory Councils



# Monthly Calls Slides

- Monthly call presentations are available in the [School System Planning Library](#).
  - Office of Career and College Readiness
    - Healthy Communities
      - Healthy Schools Community of Practice



# Helpful Information (Cont.)

Schedules, access links and information for the Department's webinars can be found in the [LDOE Weekly Newsletter](#) and [School System Support Calendar](#).

For more information, contact [healthyschools@la.gov](mailto:healthyschools@la.gov).



# Questions?





# **VISION** for **SUCCESS**

**Safe & Healthy Schools Community of Practice**

**January 25, 2024**

**Focus Presentation:**

**Mobile Crisis Response Teams**

