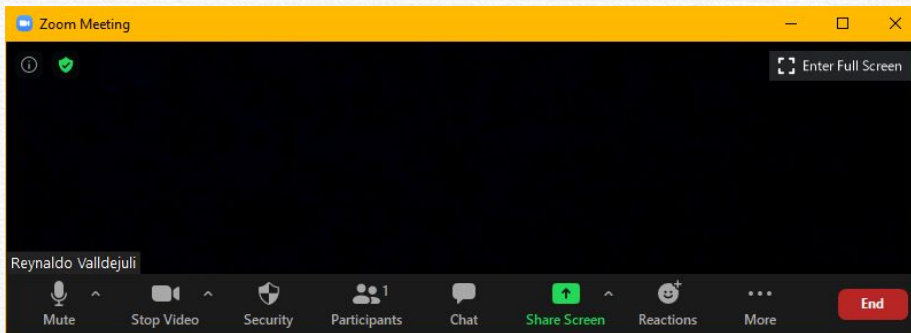


Zoom Meeting Preparation

- Please make sure your phone or computer is muted to minimize background noise.
 - To do this, hover over the bottom left-hand side of your screen and click “Mute.”
- Please make sure you have turned off your camera to save bandwidth and prevent any connectivity issues.
 - To do this, hover over the bottom left-hand side of your screen and click “Stop Video.”
- Please submit questions during the presentation in the “Chat” function located on the bottom of your screen.



NOTICE: In accordance with the Americans with Disabilities Act, if you need special assistance at this meeting please contact Idoecommunications@la.gov.

VISION for **SUCCESS**

Healthy Schools Community of Practice
Monthly Call

August 24, 2023
2 p.m.



Healthy Communities Team

michael.comeaux@la.gov	Healthy Communities: School Safety, School Health, Transportation, Nursing, Suicide Prevention
stephen.guccione@la.gov	Health/Physical Education, Whole School, Whole Community, Whole Child (WSCC) initiative, Professional Development and Technical Assistance Support
levillia.moore@la.gov	AWARE 2 and Louisiana School Social Work Expansion Grant
elizabeth.duncan@la.gov	School-based Medicaid
erica.gilliam@la.gov	School Health Advisory Councils



Agenda

Topic	Presenter
Welcome/check in	Mike Comeaux
Team Updates	HC Team
Focus Spotlight: Whole Child Model and 6 Step Process	Stephen Guccione
Exit Ticket	HC Team
Announcements	HC Team



2023 Legislative Updates

- [HB 169](#) Elementary school carpool policies and procedures.
- [SB 207](#) School Safety Act
- [HB 348](#) Reporting and investigating threats of violence
- [SB 12](#) Automated External Defibrillators
- [HB 121](#) Recess in grades K-5th grade

Please contact healthyschools@la.gov for more information.



Safety

Code Ana has developed the [Med-E Ready](#) Program to assist schools with establishing medical emergency protocols.

The Louisiana Emergency Response Network ([LERN](#)) is also able to assist with emergency response and [Stop the Bleed](#) training.

Please contact healthyschools@la.gov for more information.



Healthy and PE Updates

2023 LAHPERD Convention

- **Date:** November 1-3
- **Location:** Crowne Plaza Hotel and Convention Center
10 at College Drive (Constitution Avenue)
Baton Rouge, LA
- [Registration](#) is currently open



Health and PE Updates

RS 17:3921.3 - [Digital Devices Guidelines](#)

Please contact healthyschools@la.gov for more information.



Medical Simulation Training Education Webinar

The Simulation Medical Training and Education Council of Louisiana is hosting a “Lunch and Learn” webinar on **Wednesday, September 27 at 12 noon**. Please forward this information to all your Louisiana simulation educators. The topic is Selecting and Developing Simulation Scenarios and Cases. Melissa Madden, PhD, MSN, RN from Louisiana Tech University will be the speaker.

- Webinar Date and Time: Wednesday, September 27, 12 p.m.
- Webinar Link: <https://lsuhsc.zoom.us/j/96151311125>

Please contact dlofas@lsuhsc.edu for more information.





2022-23 School Health Service Provider of the Year Honoree

Sylvia Guidry-Brown is the Supervisor of Nurses for Health Services with the St. Landry Parish School Board





School Health Service Provider Award Finalists



Krissy Guedry, LPC
Behavioral Health



Ereeni Roulakis, CCC/SLP
Speech Therapy



Ashley Vaccarella, DPT
Physical Therapy



Renee Lashley, OTR/L
Occupational Therapy



School Health Service Provider of the Year Award

Who has positively impacted a student's health? [Nominate](#) an outstanding school nurse, behavioral health provider, speech therapist, OT or PT for the 2023-2024 School Health Service Provider Award. Nominations are accepted through **October 12**. More information about the award may be found in the [award overview](#).

Please contact elizabeth.duncan@la.gov with questions.



Verifying Medicaid Eligibility

School systems will receive a match on all students that have a SSN entered in the Escholar system. The Medicaid eligibility match report can be found in ESer under

- Reports
- Reports Request
- Medicaid eligibility

Written parental consent is required prior to checking any student eligibility through LDH website.

Contact elizabeth.duncan@la.gov for questions regarding the process.



Fee Schedule - Behavioral Health Modifiers

Code	Description	Psychologist	LCSW	LPC	LMFT
	Modifier *>	AH	AJ	HO Masters degree level	HO Masters degree level
90785	INTERACTIVE COMPLEXITY, ADD ON	\$2.75	\$2.41	\$2.41	\$2.41
90791	PSYCHIATRIC DIAGNOSTIC EVALUATION	\$65.03	\$56.90	\$56.90	\$56.90
90832	PSYCHOTHERAPY, 30 MINUTES WITH PATIENT PRESENT	\$28.59	\$25.02	\$25.02	\$25.02
90834	PSYCHOTHERAPY, 45 MINUTES WITH PATIENT PRESENT	\$40.25	\$35.22	\$35.22	\$35.22
90837	PSYCHOTHERAPY, 60 MINUTES WITH PATIENT PRESENT	\$59.27	\$51.86	\$51.86	\$51.86
90839	PSYCHOTHERAPY FOR CRISIS; FIRST 60 MINUTES	\$74.16	\$64.89	\$64.89	\$64.89
90840	PSYCHOTHERAPY FOR CRISIS; EACH ADDITIONAL 30 MINUTE ADD ON	\$36.90	\$32.29	\$32.29	\$32.29
90846	FAMILY PSYCHOTHERAPY WITHOUT PATIENT PRESENT	\$37.57	\$32.87	\$32.88	\$32.88
90847	FAMILY PSYCHOTHERAPY WITH PATIENT PRESENT	\$46.60	\$40.78	\$40.78	\$40.78
90853	GROUP PSYCHOTHERAPY	\$13.23	\$11.58	\$11.58	\$11.58

For specific questions, please contact anissa.young-ned@la.gov.

Medicaid - School Based Service Learning Collaborative

A series of 5 webinars to review foundational requirements of Medicaid funding for school health service providers. Each session is small group discussion reviewing current program services, documentation requirements, reimbursement, transportation and audit processes.

[Register](#) for an upcoming back to school session.

Please contact elizabeth.duncan@la.gov with questions.





Implementing a Whole Child Approach to Education

Supporting Academic Achievement Through School Health



Objectives

- Define the WSCC model,
- Describe the link between learning and health,
- Recognize the value of using the WSCC model to impact student achievement, and
- Describe a step-by-step process for implementation of the model





The Whole School, Whole Community, Whole Child Model

A Coordinated Approach to Learning and Health

The Whole School, Whole Community, Whole Child (WSCC) Model

WSCC Model

- Places the child at the center
- Takes a comprehensive approach to supporting learning and health
- Calls for greater alignment across sectors



Learning and Health



Improved Academic
Achievement



Better Health

*References on the link between learning and health are available [here](#).
To learn more about the connection between health and academic achievement, [click here](#)*



History



Late 1980's

CDC introduces the
Coordinated School
Health model

2007

ASCD introduces
the Whole Child
Initiative

2014

CDC and ASCD
collaborate to
develop WSCC



The Five Whole Child Tenets



Healthy

- Students enter school healthy
- Learn about and practice healthy lifestyles
- Emotionally healthy
- Physically healthy



Safe

- Physically safe
- Emotionally safe
- Secure
- Student centered and valued



Engaged

- Experiential Learning
- Access to areas of Interest
- Student Responsibility
- Active Learner



Supported

- Student Progress
- Multi-Tiered Systems of Support
- Family Support
- Differentiated Instruction



Challenged

- Real-world Experience
- Challenging Learning Experience
- Technology
- Use of Data



The Ten WSCC Components



Coordinating Policy, Process, and Practice

- Coordinate and collaborate among component areas
- Facilitate awareness of issues
- Leverage resources
- Reduce program duplication and fill gaps



The Community

Schools are part of community and support from the community is essential.

School-community collaborations can be built with:

- Local health departments
- Universities
- Non-profit organizations
- Businesses
- Social service agencies
- Parks & recreation
- Youth enrichment programs
- Faith-based organizations

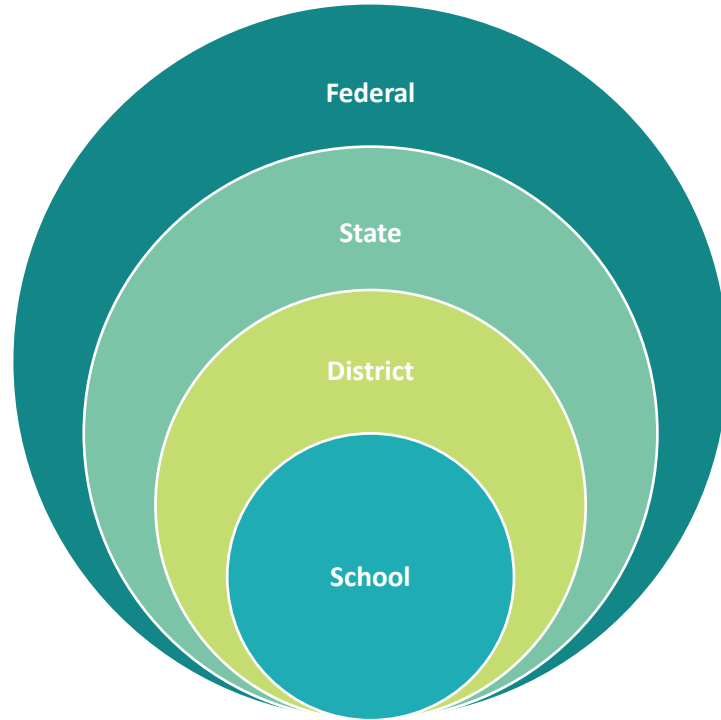


The WSCC Model in Action

A framework that can be modified and adapted to meet the unique needs of districts, schools, and communities.



Alignment with Education Policy



Alignment with Education Policy

Louisiana Revised Statute 17:17:1

*“Each city, parish, and other local public school board shall establish a **school health advisory council** to advise the board on **physical activity for students, physical and health education, nutrition, and overall student health**. The council may advise the board on issues relative to compliance with school vending machine restrictions, use of physical fitness assessment results, and school recess policies. The council members shall be appointed by the school board and shall include parents of students and individuals representing the community”*



Local Wellness Policy

- A written document that guides a school district's efforts to create healthy and supportive environments that promote student wellness. Applies to each school under its jurisdiction.
- Required for any school district participating in federal Child Nutrition Programs, including NSLP or SBP (Healthy, Hunger-Free Kids Act of 2010).
- WSCC model for school health can be integrated into the local school wellness policy and can help put into action several provisions of the Every Student Success Act (ESSA).



Alignment With Education Policy



Local School Wellness Policy

- Established at the district level.
- Implemented at the school level.
- Tool for preventing and reducing childhood obesity.
- Includes specific goals for nutrition promotion and education, physical activity, and other school-based activities that promote student wellness.



Six Steps to Impactful change



Step 1: Build Support



Step 4: Take Action



Step 2: Assess Your School



Step 5: Explore Resources



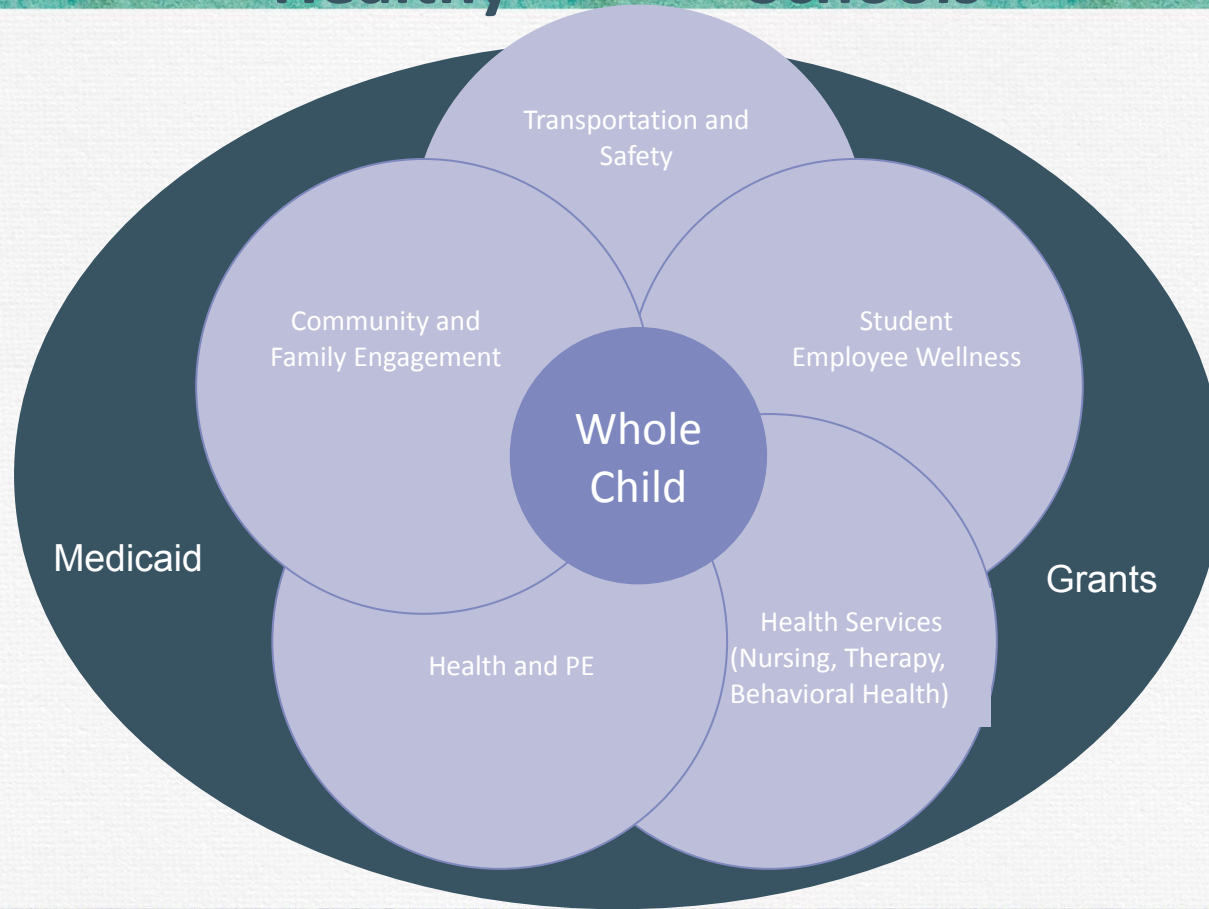
Step 3: Develop an Action Plan



Step 6: Reflect and Celebrate



Healthy Schools



Resources and Reminders

- [MHTTC](#) Mental Health Technology Transfer Network
- [SAMHSA](#) Substance Abuse and Mental Health Services Administration
- [CDC Healthy Schools](#)
- [Funded Non-Governmental Organizations for Healthy Schools | CDC.](#)
- Louisiana Mental Health Association [Statewide Community Resources Guide.](#)
- [Alliance for a Healthier Generation](#)
- **September is National Suicide Prevention Month.** [988 lifeline](#) has resources to promote suicide prevention awareness.



Helpful Information (Cont.)

Schedules, access links and information for the Department's webinars can be found in the [LDOE Weekly Newsletter](#) and [School System Support Calendar](#).

For more information contact healthyschools@la.gov



Any Questions?



VISION for **SUCCESS**

Healthy Schools Next Monthly Call:
September 28

Focus Presentation: Creating School Health
Advisory Teams

