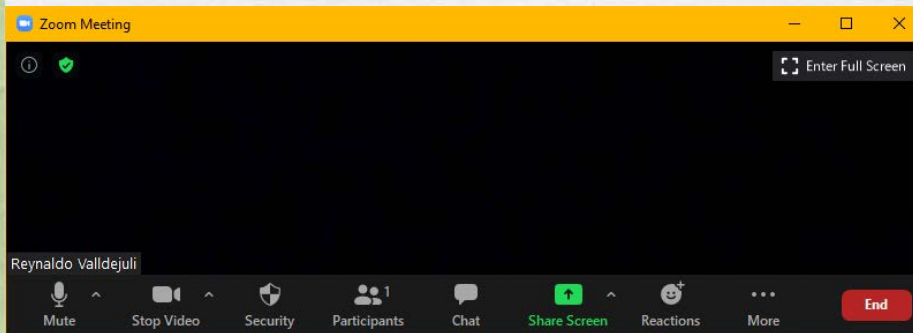


# Zoom Meeting Preparation

- Please make sure your phone or computer is muted to minimize background noise.
  - To do this, hover over the bottom left-hand side of your screen and click “Mute.”
- Please make sure you have turned off your camera to save bandwidth and prevent any connectivity issues.
  - To do this, hover over the bottom left-hand side of your screen and click “Stop Video.”
- Please submit questions during the presentation in the “Chat” function located on the bottom of your screen.



If you require an interpreter or have other accessibility needs for future LDOE meetings, please contact [LDOEcommunications@la.gov](mailto:LDOEcommunications@la.gov).

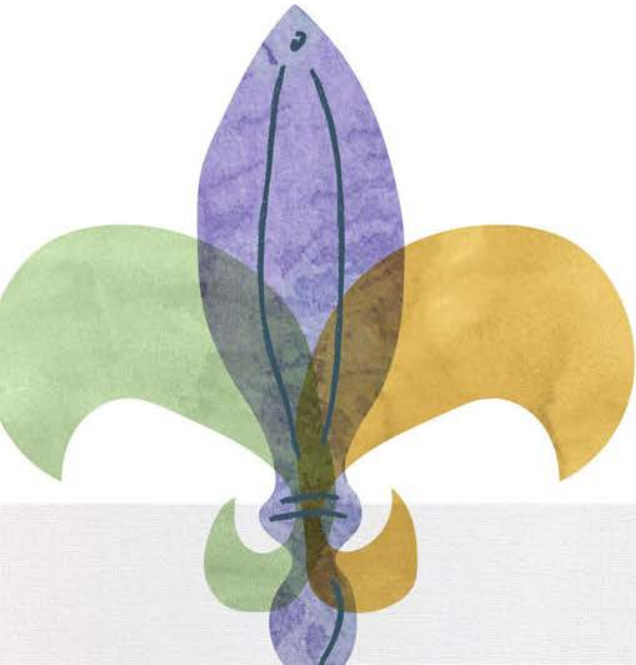


---

**Comprehensive Literacy State  
Development Grant  
CLSD CIR/UIR-A**

**October 6, 2021**

---



**In the chat, introduce yourself by stating:**

- **your role**
- **your district/school system**

## Questions?

- Place in chat with email address
- Individual questions - contact [Shanna.Beber@la.gov](mailto:Shanna.Beber@la.gov)
- Contact: [LouisianaLiteracy@la.gov](mailto:LouisianaLiteracy@la.gov)





Focus Area:

Opportunity to provide **additional** and **enhanced** literacy efforts to:

- Build capacity of local leaders
- Improve practice of teachers
- Increase literacy outcomes for children



# Literacy Coach Trainings and Supports

- Required
  - Foundations of Reading training – LEA determined through Act 108
  - Art of Coaching – virtual (Oct. 28 or November 9)
  - CDL Plain Talk Conference (Feb. 9-11)
  - Monthly Communities of Practice - Regional (virtual - no cost)
- Additional Supports (no cost to LEAs)
  - Center of Development and Learning (CDL) - Regional Literacy Specialists
  - Virtual PD provided by LDOE staff
  - Optional K-2 CLASS® training

# Communities of Practice

- Third week of the month – Regional Literacy Specialist will provide exact dates
- Opportunity to collaborate
  - Problems of practice
  - Additional resources
- Required to attend 80% to continue CLSD funding
  
- Contact for Literacy Coaching program – Dr. Phaedra Early [Phaedra.Early@la.gov](mailto:Phaedra.Early@la.gov)

# Literacy Library

- K-2 Writing PD Series
- Sound Walls
- Added more Family Literacy Grab and Go Activities



# Science of Reading Implementation Office Hours

- PD Series for Teachers and Leaders in [Literacy Library](#)
  - Webinars
  - PP and Guidance documents
- Office Hours
  - Every Monday at 3:30 p.m.
  - Zoom Link: <https://ldoe.zoom.us/j/96153652200>
    - ❖ Password: literacy
  - During this time, you can ask questions about how to implement science of reading practices in your classroom.



**Programmatic  
Quarterly  
Monitoring**



# Programmatic Monitoring: Quarterly Reporting

- Timeline:
  - Quarter 1 – October 30
  - Quarter 2 - January
  - Quarter 3 - March
  - Quarter 4 - June
- [Quarter 1 Guidance Document](#)
  - Submit the school system literacy plan
  - Indicate additional educational choice opportunity
  - Report baseline data
  - Report on progress of actions
  - Allocations

# Baseline Data

- 4 year old – Oral language skills
- K-3 – BOY literacy screener
- 5<sup>th</sup>, 8<sup>th</sup>, HS LEAP ELA mastery
- % of certified teachers

## Questions?

- Place in chat with email address
- Individual questions - contact [Shanna.Beber@la.gov](mailto:Shanna.Beber@la.gov)
- Contact: [LouisianaLiteracy@la.gov](mailto:LouisianaLiteracy@la.gov)

