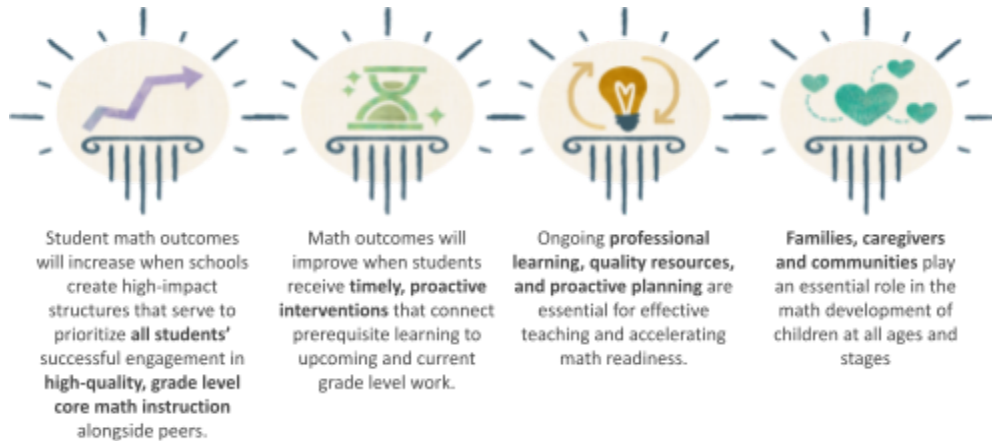




Math Leader Toolkit



Our Mission

All Louisiana students will have improved math outcomes when the four pillars of high-quality mathematics instruction designed for accelerating learning are effectively implemented at the school, system, and state levels.

Math Leader Toolkit

The Louisiana Department of Education and NIET have worked together to develop the Math Leader Toolkit to support teachers and leaders in transitioning to the [Louisiana Educator Advancement Development System \(LEADS\)](#). The toolkit includes resources for teachers, coaches, and leaders and all of these tools are aligned with the Louisiana Educator Rubric (LER).

The Math Leader Toolkit includes:

- [Student Work Analysis Process](#) (Teachers)
- [Student Work Analysis Coaching Tool](#) (Coaches and Instructional Support)
- [Content-Specific Feedback Framework for Leaders](#) (Leaders)
- [Acceleration Program Appraisal](#) (Leaders)

Please reach out to STEM@la.gov with any questions or for support regarding the Math Leader Toolkit.