

Louisiana Believes

School System Planning Call
April 11, 2018

Agenda

- I. School System Planning**
- II. Early Childhood**
- III. Teaching and Learning**
- IV. Measuring Results**
- V. Educator Workforce**
- VI. Graduation Pathways**
- VII. Call Summary**

Suggested participants for this call:

- early childhood supervisors
- district test coordinators and accountability contacts
- curriculum supervisors
- special education supervisors
- Teacher Leader and mentor teacher supervisors
- personnel directors
- high school and career and technical supervisors

School System Planning

2018-2019 School System Planning

In preparation for 2018-2019 school year, school systems have been planning for their struggling schools through the School Redesign process. At this point, every eligible school system has submitted a plan to improve their persistently struggling schools.

In total:

- 87 school systems have submitted plans for school redesign.
- 19 have been approved.
- 68 will be considered in June.

All school systems, regardless of status, should ensure that they are planning to launch their School Redesign plans for 2018-2019.

Teachers Ready to Implement High Quality Curriculum

The goal across all 271 persistently struggling schools is to ensure that at the start of the 2018-2019 school year 100 percent of teachers are implementing high quality curriculum in English and math. To support school systems in achieving these goals, the Department will focus on three phases of support.

Phase	Department Support
Pre-Implementation (summer)	The Department will provide a pre-implementation checklist, and network staff will work with school systems to complete each milestone.
Early Support (fall)	The Department will provide classroom observation tools for Tier 1 curricula and training on how to use these tools. Department staff will observe classrooms with districts.
Deep Support (spring)	The Department may provide for a curriculum or workforce audit from a third-party vendor for school systems that need additional help with implementation.

Before the Start of 2018-19

In order to ensure that 100 percent of teachers are ready to implement high quality curriculum at the start of the 2018-2019 school year, the Department established [six pre-implementation milestones](#):

1. Establish the district-level team responsible for all aspects of curriculum and teacher professional development purchasing, distribution and scheduling
2. Upload budgets into eGMS
3. Purchase curriculum and necessary supporting materials
4. Establish calendar for curriculum-based professional development
5. Sign MOUs with teacher preparation providers as appropriate
6. Distribute curriculum and supporting materials to teachers and remove old curricula

In addition to completing these six implementation milestones, key district staff should attend the School Redesign session at the Teacher Leader Summit. Through this session, schools will prepare planning for the start of the school year.

2018-2019 School System Planning Calendar

The [2018-2019 school system planning calendar](#) is now available in the School System Support Toolbox and contains dates for:

- Supervisor, Principal and Teacher Leader Collaborations;
- Monthly Planning Calls: School System, Assessment & Accountability, Data Coordinator, Special Education, and Education Technology;
- Newsletter distribution: Superintendents, Charter, Nonpublic, Teacher Leader, Believe and Prepare, Counselor Connect and Early Childhood; and
- BESE and Advisory Council meetings.



Early Childhood

RFA for Early Childhood Community Network Lead Agencies

- Designations for Early Childhood Community Network lead agencies expire June 30.
- The Department released a [Request for Applications for Early Childhood Community Network Lead Agencies](#) at the beginning of April which is **due May 1**.
- Applications will be reviewed in early May and recommendations will be referred to BESE for approval in June.
- New lead agency designations will be for the period July 1, 2018 through June 30, 2020.

Key Deadlines for Lead Agencies and Early Childhood Programs

For Community Network Lead Agencies:

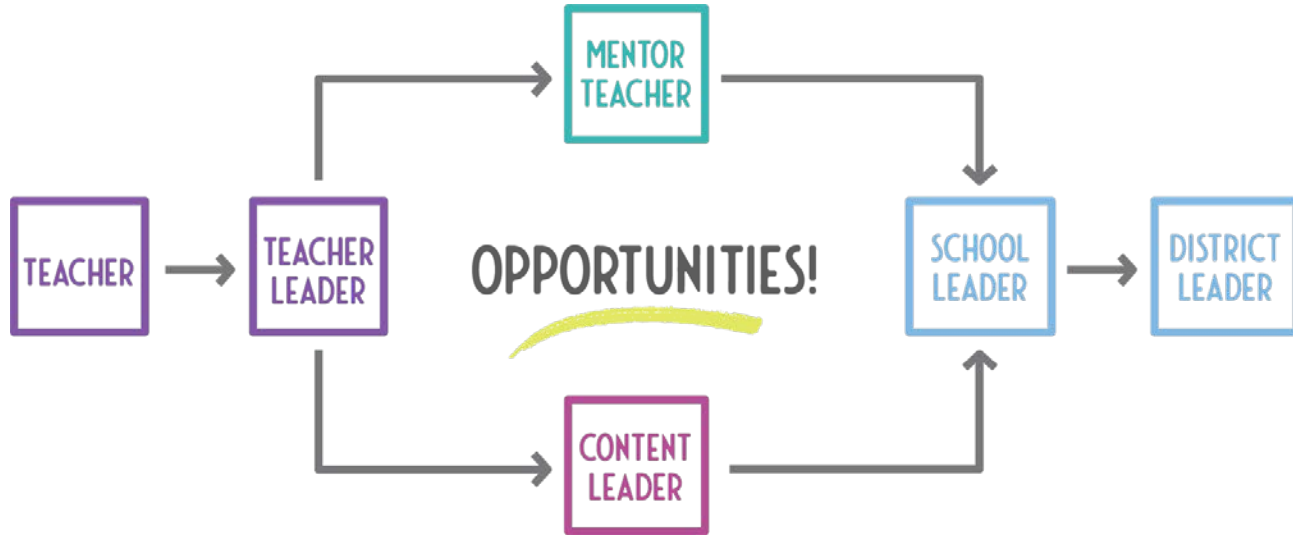
- **May 1:** Lead Agency applications are due.
- **May 15:** All CLASS[®] observations must be complete and entered in the portal.
- **May 18:** All CLASS[®] observation error correction requests are due.

For Early Childhood Programs:

- **May 31:** Final GOLD[®] checkpoint.

Teaching and Learning

Professional Development: Content Leaders & Mentor Teachers



Goals

1. Grow the local leadership pipeline for schools and districts by developing talented teachers within the system.
2. Create a cadre of talented educators who have the knowledge and skills to coach and support other teachers within their schools and districts.

Professional Development: Content Leaders & Mentor Teachers

Content Leaders:

- Provide content- and curriculum-specific professional development to teachers in their district using turnkey session materials
 - Lead PLCs
 - Lead sessions at school and district PD days



Mentor Teachers:

- Host a resident in an undergraduate teacher program that is part of the Believe and Prepare expansion of year-long residencies and co-teach with them for the full school year.
- Provide one-on-one coaching for educators including reviewing instructional materials and student work samples and leading frequent observation/feedback cycles.
 - Residents in a post-baccalaureate program
 - Other teachers who need support

Professional Development: Content Leader and Mentor Teacher Cohort 2

The Department has received over 1,200 nominations from school systems for both Mentor Teacher training and Content Leader training for 2018-2019. Thank you for your submissions.

- **By April 20, the Department will notify school systems of their nominees' acceptance into the 2018-2019 cohort.**
- Acceptance is based on a candidate's past success with students and their potential to effectively support others teachers.

Please contact louisianateacherleaders@la.gov for questions regarding Content Leader training.

For Mentor Teacher training questions, please contact believeandprepare@la.gov.

Professional Development: Teacher Leader Summit

The 2018 Louisiana Teacher Leader Summit will take place May 30 through June 1 at the Morial Convention Center in New Orleans.

Sessions will focus on the theme “meaningful growth for every student, every day.” In addition to presentations from hundreds of Louisiana educators, this year’s Summit will feature presentations from esteemed national experts.

Refer to the [2018 Teacher Leader Summit overview](#) for information about the schedule, recommended attendees, and lodging.



Professional Development: Teacher Leader Summit

Registration opens in WisdomWhere on April 23. Start planning for who will attend.

- **Registration for the event is first come, first served.** This means school systems will not receive specific allotments of seats.
- **The Department will release the session list when registration opens on April 23.**
- **The majority of individual sessions are first come, first served, but a handful require pre-registration.** Pre-registration for these sessions will also take place via WisdomWhere beginning on April 23.
- **Approximately 70 percent of the sessions target classroom teachers, therefore : system leaders should ensure that about 70 percent of their attendees are cur classroom teachers.**



Professional Development: ELA TL Summit Sessions

The upcoming Teacher Leader Summit will offer ELA sessions that integrate learning around the ELA goal, curriculum, and instructional practice. Highlights are detailed below.

Vendor Sessions	Session Focus	Content Focus
<ul style="list-style-type: none"> • American Reading Company • Learnzillion • Open Up Resources • School Kit • Teaching Lab • The Writing Revolution • Amplify • EL Education • Great Minds • Kurzweil • Pearson MyPerspectives 	<ul style="list-style-type: none"> • Core, Foundations, and IRLA • New features, customization, and editing • Overview of curriculum, supports, features • Foundational skills instruction, assessment • Effective professional learning • Scaffolded strategies in writing • Core, Foundations, and Grade 3 curriculum • Standards-aligned Tier One instruction • Wit and Wisdom, authentic, rich texts • Supports reading, annotating and writing • Components, design and structure 	<ul style="list-style-type: none"> • ELA Tier One Curriculum and PD, K-12 • ELA Guidebooks Access and PD, 3-12 • ELA Guidebooks Access, 6-8 • Mentor Teacher Training, K-2 • ELA Guidebooks PD, 3-12 • ELA Guidebooks Supports, 3-12 • ELA Tier One Curriculum, K-3 • ELA Tier One Curriculum, K-5 • ELA Tier One Curriculum, K-8 • ELA Guidebooks Supports, 3-12 • ELA Tier One Curriculum, 9-12
Department Sessions	Session Focus	Content Focus
<ul style="list-style-type: none"> • ELA Guidebook Implementation • Diverse Learners Supports • Diving Deeper into Diverse Learner Supports • Literacy 2020: HS Literacy Classroom 	<ul style="list-style-type: none"> • Overview to adopt implementation plan • Overview to Diverse Learner Supports • Plan and implement Diverse Learner Supports • New features for ELA HS Guidebooks 	<ul style="list-style-type: none"> • Panel Discussion • ELA Guidebooks for grades 3-8 • ELA Guidebooks for grades 3-8 • ELA HS Guidebooks updates

Professional Development: Math TL Summit Sessions

The upcoming Teacher Leader Summit will offer math sessions that integrate learning around curriculum, classroom practice, and content knowledge. Highlights are detailed below.

All Wednesday and Thursday sessions for math will require pre-registration.

High Quality Curricula Implementation Focus	Classroom Practice Focus	Content Focused
<ul style="list-style-type: none">• Agile Minds (6-12)• Eureka Math (PK-HS)• Geometry Common Core (HS)• Illustrative Mathematics (6-8)• Jump Math (K-8)• Ready Louisiana Mathematics (K-5)• Springboard Math (HS)• Statistical Reasoning (HS)• Zearn Math (K-5)• Implementing Intensive Algebra I (Agile Minds, Eureka, Springboard) (HS)	<ul style="list-style-type: none">• Engaging Students in Deep Mathematical Thinking (3-HS)• 5 Practices of Math Classrooms (K-HS)• Routines to Get Kids Talking Math (K-HS)• Engaging Kids in Higher Order Thinking (Springboard-HS)• Supporting Struggling Students (Eureka, 3-HS)	<ul style="list-style-type: none">• Foundations to Fractions K-2 (Eureka)• Foundations to grade 3 Math (Eureka)• Foundation to Middle and High School Math (Eureka)

Professional Development: Science TL Summit Sessions

The upcoming Teacher Leader Summit will offer science sessions addressing the [Louisiana Student Standards for Science](#). Sessions will focus on the connection between standards, instruction, and assessment. Teachers will have an opportunity to dive deep into high-quality instructional resources and develop an understanding of how to implement the resources into their teaching and learning practices.

Highlights include:

- Louisiana Phenomena: How to Identify Them and Use them in Your Classroom
- Using the Science Scope and Sequences to Plan Daily Instruction for: K-2;3-5; 6-8; Biology; and Physical Science

All Wednesday and Thursday sessions for science will require pre-registration.

Professional Development: Social Studies TL Summit Sessions

The upcoming Teacher Leader Summit will provide social studies sessions that integrate learning around the social studies goal, curriculum, and instructional practice. Highlights are detailed below.

High Quality Curricula Implementation Focus	Classroom Practice Focus	Content Focused
<ul style="list-style-type: none"> Gilder Lehrman Institute of American History DBQ Social Studies Weekly, Inc. Choices by Brown University 	<ul style="list-style-type: none"> Teaching Literacy through History Inquiry-based units that facilitate evidence based arguments Lesson plans including rigorous assessment, word study, writing prompts, and reading. Units draw connections between historical and contemporary international issues. 	<ul style="list-style-type: none"> Supplemental materials for American History Supplemental curriculum for grades 4 - 7, and 9-12 Full curriculum Grades K-2, 4, 5 Supplemental curriculum for 9-12
Local Resources/The Department	Classroom Practice Focus	Content Focused
<ul style="list-style-type: none"> National World War II Museum Historic New Orleans Collection Lesson Planning Using the Scope and Sequence Documents 	<ul style="list-style-type: none"> Exhibitions and Lessons for WWII Exhibitions and Lessons for specific topics Breaking down instructional task to determine learning goals to create daily lesson plans. 	<ul style="list-style-type: none"> Supplemental materials for American History Supplemental materials for grades K-12 Provides guidance on content alignment for grades 3-8, Civics, and U.S. History

Professional Development: Students with Disabilities TL Summit Sessions

The upcoming Teacher Leader Summit will offer sessions that address and build upon the four strategies included in the [Guidebook for Supporting Students with Disabilities](#). All participants will have the opportunity to increase their pedagogical content knowledge in special education.

Strategy 1 Early & Accurate ID	<ul style="list-style-type: none">• Using screening data to select and implement interventions aligned to students' needs
Strategy 2 High Quality Instruction	<ul style="list-style-type: none">• Implementing the Louisiana Science Connectors for students with significant disabilities• Using Universal Design for Learning (UDL) and AT to increase access for SWD in ELA and Math• Diverse Learners + ELA Guidebooks + Kurzweil 3000 = Success• Every Student, Every Day: Supporting Meaningful Reading Growth• ELA Guidebooks: A Deeper Dive into 3-8 Diverse Learner Updates• LEAP Connect at High School Assessment Overview
Strategy 3 Supports and Related Services	<ul style="list-style-type: none">• Implementing function 3-based intervention strategies to support students with behavioral needs• Partnering with Your Parent Center
Strategy 4 Transition	<ul style="list-style-type: none">• Leveraging LRS funds to support vocational programs for SWD• Using community partnerships to build vocational programs for students with significant disabilities

Professional Development: English Learner TL Summit Sessions

The upcoming Teacher Leader Summit will offer a set of English learner sessions that build upon the strategies in the forthcoming English Learner Guidebook, including integrating learning around curriculum, classroom practice, and content knowledge with an EL's lens.

All EL sessions for Wednesday and Thursday require pre-registration and have seat limitations.

Please prepare to register as soon as registration opens on April 23.

Strategy 1 Integrated Instruction	<ul style="list-style-type: none">• Sheltered English Framework (SIOP)<ul style="list-style-type: none">• Lesson Preparation• Building Background Knowledge and Comprehensible Input• Strategies and Interaction• Connectors for ELs—Introduction:1.1• ELA Guidebook Lesson Model—Fully Scaffolded
Strategy 3 Immersion Model	
Strategy 2 Progress Monitoring	<ul style="list-style-type: none">• ELPT Results—Next Steps: Individual Learning Plan• Reveal of the NEW EL screener: ELPS

Professional Development: LEAP 360 TL Summit Sessions

The upcoming Teacher Leader Summit will offer LEAP 360 sessions that focus on the connection between standards, instruction, and assessment. These sessions will include:

- LEAP 360 Overview,
- LEAP 360 guidance documents,
- ELA specific data and resources, and
- Math specific data and resources.

Professional Development: LEAP 2025 TL Summit Sessions

All assessment content Teacher Leader Summit sessions will focus on helping students develop skills in written communication of content knowledge and conceptual understanding. Highlights include:

ELA	<ul style="list-style-type: none">• ELA Assessment Results Make the Case: How to Build ELA Knowledge in Writing and Reading (grades 3-5; grades 6-10)
Math	<ul style="list-style-type: none">• Math Assessment Results Make the Case: Creating Type II and Type III Tasks (grades 3-5; grades 6-8; Algebra I and Geometry)• Charge up your math classes with the Desmos Calculator!• Facilitating Productive Classroom Conversations Using Desmos Activity Builder
Social Studies	<ul style="list-style-type: none">• Social Studies Assessment Results Make the Case: Scoring Student Responses to Extended-Response Tasks (grades 3-5; grades 6-8 & U.S. History)• Join the Revolution! Build Your Own Social Studies Assessments
Science	<ul style="list-style-type: none">• New LEAP 2025 Grades 3-8 Science & Biology Assessment Overview• Engineer Your Own Multi-Dimensional Science Assessments

The background of the slide is a watercolor-style illustration. It features soft, blended washes of light blue and white, creating a textured, ethereal effect. The colors are more saturated in some areas and lighter in others, giving it a painterly quality. The overall composition is centered around the text.

Measuring Results: 2017-2018 Administration

2018 LEAP 2025 Testing Schedule

The Spring LEAP 2025 assessment schedule is listed below. District test coordinators should contact assessment@la.gov with any questions.

Grade Level	Assessment	Test Dates
3-8	LEAP 2025 (ELA, Math, Social Studies, Science Field Test)	Paper-Based Window: April 30 – May 4 Computer-Based Window: April 9 – May 4
9-12 (as applicable)	LEAP 2025 and EOC	Spring Window: April 23 – May 18 Summer Window: June 18 – 22

Summer 2018 Testing Schedule and Technology Support

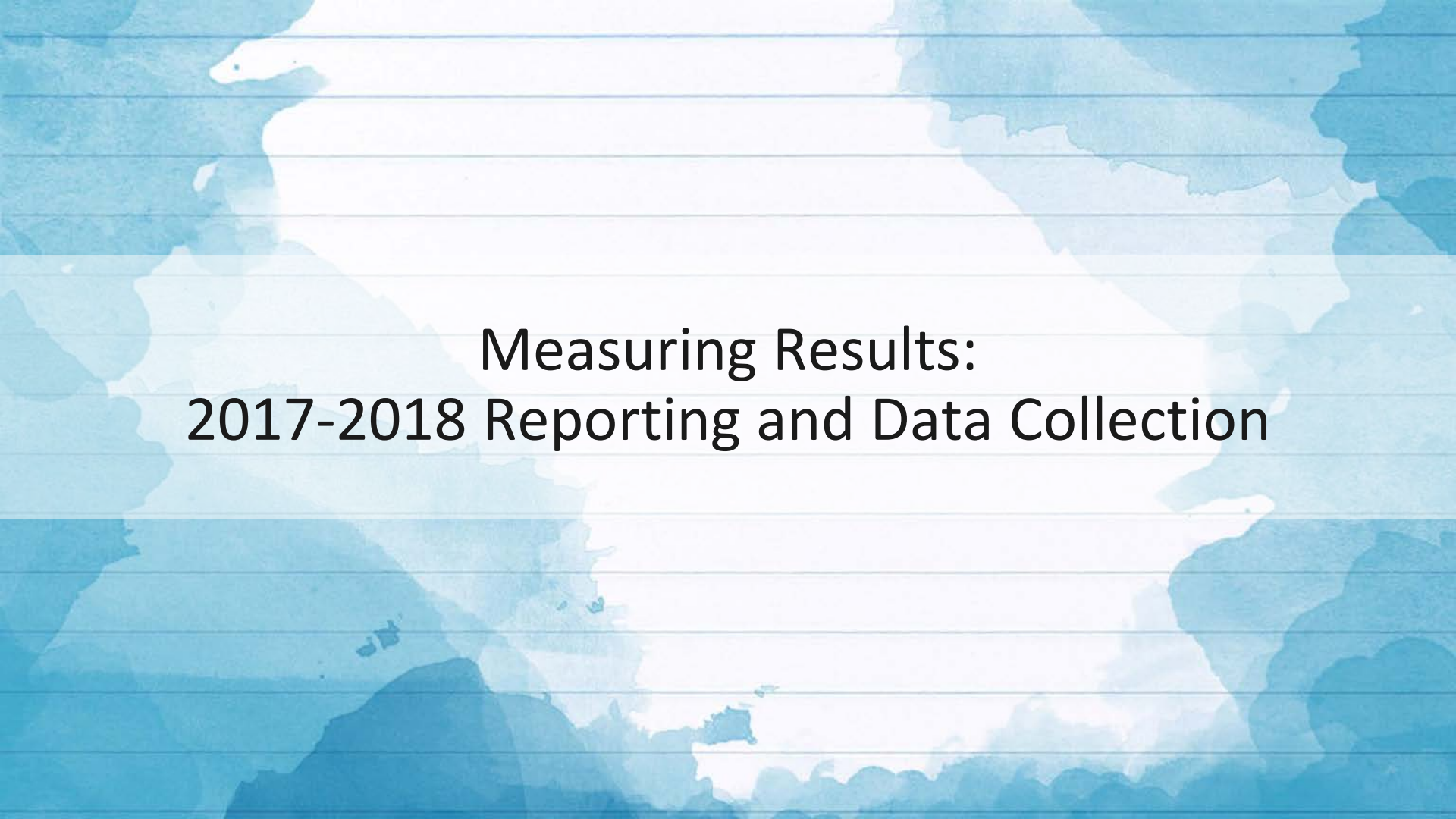
The summer testing window for high school students is June 18-22. District Test Coordinators must work with District Technology Coordinators to ensure preparation for testing is completed. A plan for support should be in place prior to and during spring assessments. Technology Coordinators should use the [Technology User Guide](#) for steps to prepare devices and the TSM. Technology Coordinators should be aware of the following responsibilities:

Before Testing:

- attending relevant monthly webinars,
- becoming familiar with Technology User Guide,
- installing secure web browser,
- ensuring computers are configured prior to testing,
- completing the System Readiness Check in INSIGHT to ensure computers are ready for testing, and
- creating a Communication Plan with School Test Coordinator to support test administrators during testing.

During Testing:

- being readily available while testing is in process.



Measuring Results: 2017-2018 Reporting and Data Collection

2017-2018 Release Timeline

Here is an overview of both assessment and accountability releases for the 2017-2018 school year.

Results	Timeline
2017 NAEP assessment	April
Class of 2017 TOPS eligibility	April
Class of 2017 graduation and credentialing rates	May
2017-2018 assessment results	June-August
School and district report cards; early education performance profiles	Fall

Communicating 2018 Assessment Results

Below is the timeline for the release of the 2017-2018 school- and school system-level assessment results. School systems should develop a plan for communicating these results to principals, teachers, and families.

Assessment	Student Report Timeline and Location	District-Level Results Time and Location
ELPT	May in AIR Portal	May in AIR Portal
LAA 1/LEAP Connect	May in eDIRECT	May in eDIRECT
LEAP Online Cleanup	not applicable	June in eDIRECT
LEAP 2025 (3-8, HS)	Grade 3-8: June in eDIRECT HS: 5-level ELA and math at end of testing window	June in eDIRECT
EOC (Eng III, Bio, US History) Final Reports	HS 4-level all subjects: In window	summer in eDIRECT
ACT	spring, state administered student and school results from ACT sent to schools	summer iCD and district profile from ACT in summer; additional reporting in FTP
Advanced Placement	summer, sent to schools	early fall in FTP
LEAP 2025 US History	early fall in eDIRECT	early fall in eDIRECT

Parent Guides to the LEAP Connect and ELPT Student Reports

The Department released parent guides for the LEAP Connect student reports for grades 3-8 and the English Language Proficiency Test student reports for grades K-12.

The guides provide families with information on:

- student achievement level by content or domain;
- a comparison of the student's progress to others; and
- information to help parents understand how to use these results to guide discussions with their child's teacher.

Schools should send the parent guides home to parents along with the student reports in May.

Both of these guides, and all other assessment resources, can be found in the [Family Support Toolbox](#). Translated versions will be available next week.

PARENT GUIDE TO THE → LEAP CONNECT STUDENT REPORTS ←

HOW DID MY CHILD PERFORM ON THE LEAP CONNECT THIS YEAR?

In the middle of each report is your child's overall performance information including:

- ✓ achievement level,
- ✓ scale score, and
- ✓ a list of skills your child is able to do in the specific content area.

STUDENT PERFORMANCE
Overall performance of this student based on reports to show what they know and can do in a specific content area:
• solve addition, subtraction, and multiplication problems (multiplication limited to single multiplication less than 100)
• identify the characteristics of an angle
• find the missing length in a two-dimensional geometric figure
• count seconds
• use the number line to represent 0-1000
• compare fractions
• count and compare to find the area of rectangles
• measure a line segment

Below the overall performance information is a chart of the score ranges for each LEAP Connect achievement level at your child's grade level. The score ranges change slightly across grade levels and subjects.

	ELA	MATH
LEVEL 4	(1251-1260)	(1251-1260)
LEVEL 3	(1240-1250)	(1240-1250)
LEVEL 2	(1234-1236)	(1230-1239)
LEVEL 1	(1230-1233)	(1230-1233)

HOW DID MY CHILD DO IN COMPARISON TO OTHERS?

This section includes the school system and state performance averages so you can see how your child's performance compares to that of other students in the same grade and subject area.

HOW SHOULD I, OR MY CHILD'S TEACHER, USE THESE RESULTS?

The scores and ratings will be used to help teachers identify students who need additional support or more challenging work in each subject area. The information will also be used to measure how well schools and school systems are helping students achieve higher expectations.

As a parent, you can use the test results to guide a discussion with your child's teacher(s) about additional supports or enrichment that may be needed in class and at home.

HERE ARE SOME SUGGESTED QUESTIONS TO ASK WHEN DISCUSSING THE RESULTS WITH YOUR CHILD'S TEACHER(S):

- Where is my child doing well and where does he or she need improvement?
- What can be done in the classroom to help improve his or her area(s) of weakness?
- What can be done to appropriately challenge my child in areas where he or she exceeds the expectations?
- How can I help support my child's learning at home?
- How do we ensure that my child continues to progress?



**FOR ADDITIONAL TOOLS AND RESOURCES
TO HELP YOU SUPPORT STUDENT LEARNING
AT HOME, visit the Family Support Toolbox at**
<https://www.louisianabelieves.com/resources/family-support-toolbox>

2017-2018 Teacher Roster Verification for VAM and TSG

The Curriculum Verification and Results (CVR) Reporting [Portal](#) roster verification process ensures that teachers are assigned to the correct courses and classroom rosters for the purposes of value-added (VAM) and transitional student growth (TSG) data analyses.

In 2017-2018, VAM results will account for 35 percent of the Student Growth component of the teacher's final evaluation.

- Teachers in grades 4-8 in ELA, Math, and Social Studies will receive VAM results.
- Teachers in Algebra I, Geometry, and English I will receive TSG results in 2017-2018 because these assessments are in transition to new achievement levels. These TSG results are for information purposes only and will not count in the teacher's final evaluation.

2017-2018 Teacher Roster Verification for VAM and TSG

Now - April 20: View Only

- During this time, users can view and check the roster data for accuracy but **cannot** make changes in CVR. The CVR Help Desk will be able to assist with any issues that a district must correct in the source data systems.

May 7 - 18: Roster Verification

- During this time, users can view and check the roster data for accuracy, and make changes in the system.

Data Systems: Closing Out 2017-2018

Key data coordinator action items in April include submitting data to close out the school year and providing feedback/updates to the Department for next school year.

End-of-year data is important to:

- students (meeting graduation, TOPS, and/or post-secondary enrollment requirements),
- funding (updates to October and February enrollments),
- Accountability (Early Childhood and K12), and
- Career/Tech work.

It is important for school system program teams to work with data managers to ensure submissions are accurate.

Details on closing out the school year will be provided at the [Data Coordinator's monthly webinar](#) **tomorrow, April 12 at 1:00 p.m.** All staff responsible for submitting school system data to state data systems should attend. No pre-registration required.

Data Systems: Preparation for Next School Year

At the March collaborations, the Department provided data managers with proposed changes to data systems for next school year. These included updates to the Department systems, DRC assessment file layouts/workflow, and eScholar.

Data managers and program office staff should sync to review changes to the data systems and submit the [feedback survey](#) by Friday, April 13. This feedback will be used to finalize 2018-2019 data system changes.

School systems may also begin submitting requests to the Department for changes to their districts and schools.



- Online Sponsor Site System (SPS) forms are available for submitting change requests.
- This includes requests to add new schools, school closures, and other school changes (e.g. grade reconfiguration, administrator information, program updates, etc.).
- Please refer to the Sponsor Site (SPS) Online update guidance posted on [INSIGHT](#).

The background of the slide is a watercolor-style illustration. It features soft, blended washes of light blue and white, creating a textured, ethereal effect. The colors are more saturated in some areas and lighter in others, giving it a painterly quality. The overall composition is centered around the text.

Measuring Results: 2018-2019 Administration

LEAP 2025 Assessment Development Educator Review Committees

Assessment Development Educator Review Committees

- convene from May through September
- selected educators review potential assessment items or provide recommendations for scoring tasks

The vendor will provide lodging, breakfast, lunch, stipend, and reimburse for mileage and substitutes.

Interest survey links, info about the different committees, and contact info for the assessment coordinators can be found in [Assessment Development Educator Review Committees](#) overview in the [Assessment Guidance](#) library.

The Assessment Development Educator Review Committees webinar recording will be located in [Assessment Guidance](#) library by early next week.

Interest Surveys Closing Soon

Closing April 13:

- Item Content and Bias Reviews: All science and social studies
- Item Alignment Review: All math and ELA
- Rangefinding: Biology, US History, Algebra I, Geometry, and LEAP Connect ELA

Closing April 20:

- Item Content and Bias Reviews: All math
- Rangefinding: social studies 6-8, math 3-8, science 3-8

Closing May 4:

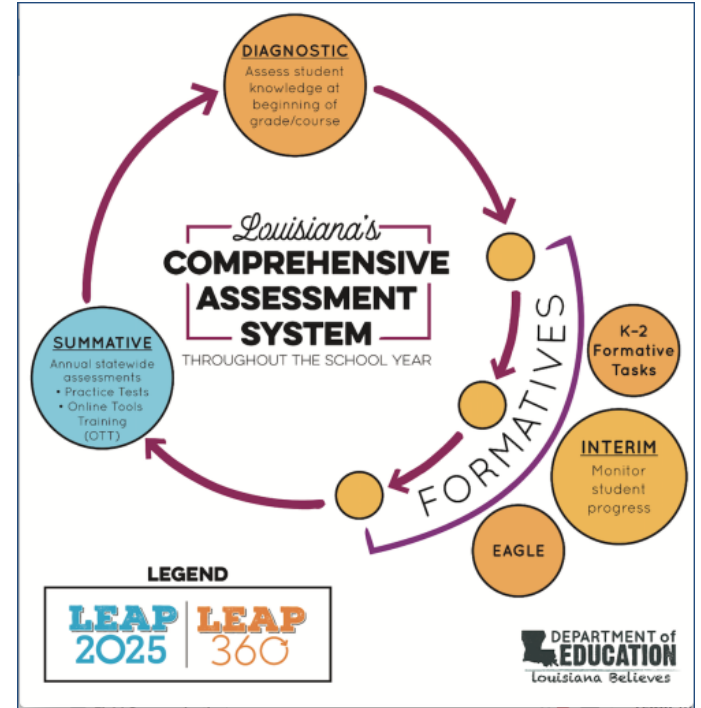
- Data Review: All math, all ELA, and Biology
- U.S. History Standard Setting

LEAP 360: Streamlining Assessments

There are three main purposes for classroom assessments:

1. Know where students are when they enter a classroom.
2. Monitor how students are learning content over the year.
3. Verify what students have learned.

LEAP 360 pairs with LEAP 2025 to reduce overall testing time while realizing all three purposes.



LEAP 360: 2018-2019

During the first year of LEAP 360 implementation, feedback was collected from focus groups, school system and school leaders, and teachers. This feedback was used to plan enhancements across usability, administration, and reporting for the 2018-2019 school year.

School systems that signed a LEAP 360 Memorandum of Understanding (MOU) for the 2017-2018 school year may choose to continue using LEAP 360 through June 30, 2019, under the same terms and conditions.

LEAP 360 will be available to school systems in the 2018-2019 at no cost.

Year two provides school systems with an opportunity to:

- re-evaluate existing practices,
- reduce duplicative testing, and
- transition to a more comprehensive assessment system that yields valid and reliable information on student performance throughout the school year.

LEAP 360: 2018-2019

Next Steps

- The Department is continuing to gather feedback from school systems and school level users through focus groups, site visits, and assessment@la.gov. Enhancements across usability, administration, and reporting will be implemented for the 2018-2019 school year.
- To opt in and amend your school system's existing agreement, each Superintendent must sign an amendment to the original agreement.
- Please click [here](#) to download the **LEAP 360 MOU Amendment (2018-2019)** form. Complete, sign, and return an electronic copy to assessment@la.gov by **July 7**.

School systems should anticipate a cost for the 2019-2020 school year.

The background of the slide is a watercolor-style illustration. It features a central white area that tapers towards the top and bottom, creating a shape reminiscent of a stylized letter 'A' or a wide arrow. This white area is surrounded by various shades of blue, from light sky blue to deep, saturated teal. The colors are blended together with soft, irregular edges, giving it a painterly, artistic feel. The overall composition is balanced and clean.

Educator Workforce

Louisiana Teacher and Principal of the Year Semi-finalists

Congratulations to these school systems and to their [Teacher and Principal of the Year semi-finalists](#).

Allen Parish	Concordia Parish	Jefferson Davis Parish	Pointe Coupee Parish	St. Tammany Parish
Ascension Parish	DeSoto Parish	Jefferson Parish	Richland Parish	Tangipahoa Parish
Assumption Parish	East Baton Rouge Parish	Lafayette Parish	Sabine Parish	Terrebonne Parish
Beauregard Parish	East Feliciana Parish	LaSalle Parish	St. Bernard Parish	Union Parish
Bossier Parish	Evangeline Parish	Lincoln Parish	St. James Parish	Vernon Parish
Caddo Parish	FirstLine Schools	Livingston Parish	St. John the Baptist Parish	West Feliciana Parish
Cameron Parish	Grant Parish	Orleans Parish	St. Landry Parish	Zachary Community School District
City of Monroe School District	Iberia Parish	Ouachita Parish	St. Martin Parish	
Claiborne Parish	Iberville Parish	Plaquemines Parish	St. Mary Parish	

Louisiana Teacher and Principal of the Year Next Steps

Finalists for Teacher and Principal of the Year will be announced live on May 30 during the opening of the Teacher Leader Summit at the Morial Convention Center in New Orleans.

The overall state Teacher and Principal of the Year will be announced at the 12th Annual Cecil J. Picard Educator Excellence Symposium and Celebration in Baton Rouge on July 27.

All school systems are encouraged to attend the gala and join the Department in celebrating the incredible work of our 2019 semi-finalists and finalists.

2017-2018 Educator Workforce Reports

On March 12, several sections of the 2017-2018 educator workforce data were released in the [secure reporting site](#), including an overview of workforce data, evaluating results, and information on recruiting and hiring.

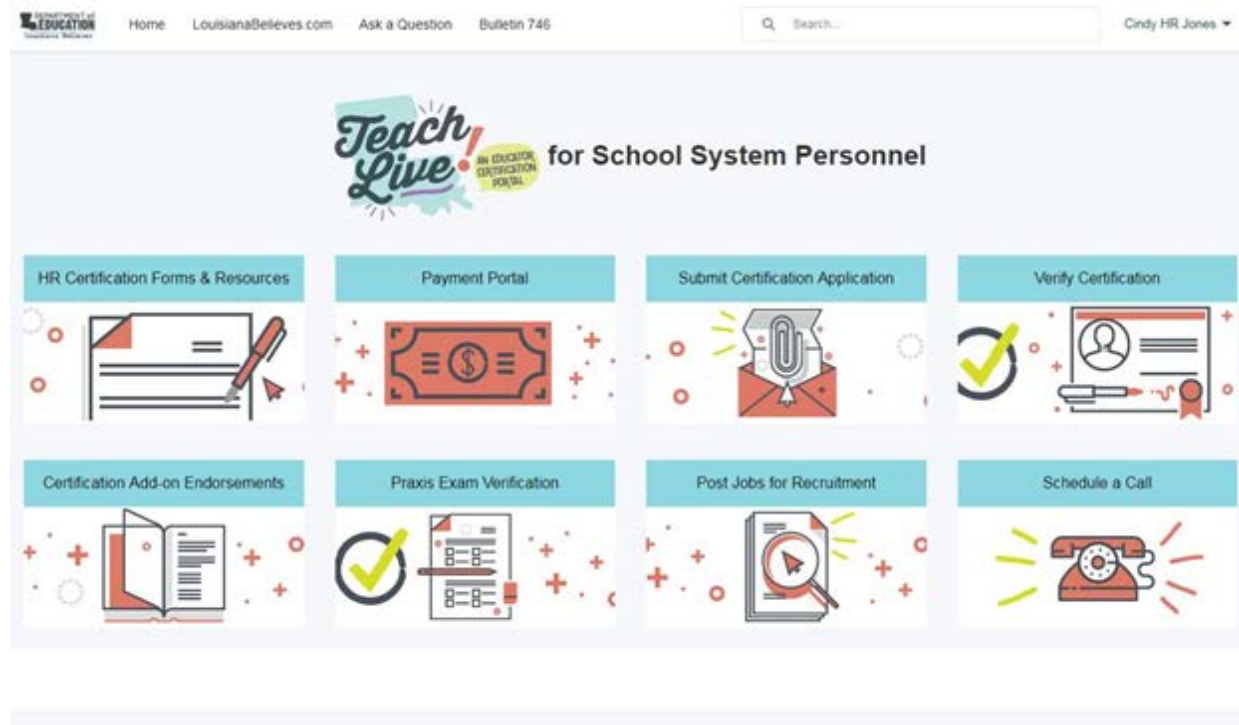
Later this month, the Department will release data on retention, promotion, tenure, compensation, and equity.

This spring, school system leaders will meet with network leaders to review the 2017-2018 workforce data in order to:

- make decisions regarding teacher placement for the 2018-2019 academic year,
- establish or strengthen partnerships with teacher preparation providers, and
- discuss how workforce data can be used in the 2018-2019 school redesign grant application.

Teach Live: Teacher Certification Portal

In response to feedback from school system leaders, **the Department is excited to announce the launch of a new educator certification portal** that is designed to improve customer service and that will enable digital submission of certification requests.



Teach Live: Teacher Certification Portal

The portal will allow for:

- direct, tracked communication between the Department, personnel directors and their teams, and educators;
- electronic submission of fillable PDF certification applications; and
- online payment of fees for certification applications.

The portal is currently being piloted in select school systems and will go live in early May.

Teacher Appreciation Week

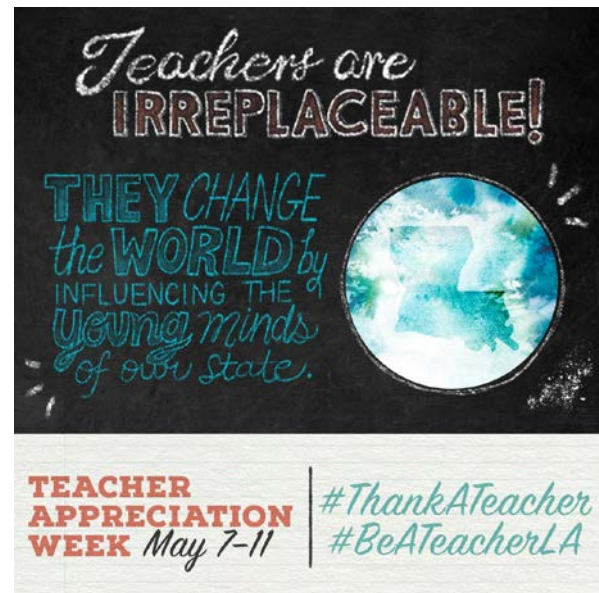
The Department invites school systems and educators across the state to join us during National Teacher Appreciation Week, May 7-11, in elevating the most noble of professions on social media!

School system and school leaders can join in on the fun by:

- posting pictures or videos of your teachers thanking them for what they do;
- posting a picture or video saying “Thank You” to a teacher that made a difference in your life; and
- tagging the Department in your posts using the hashtags #ThankATeacher and #BeATeacherLA.

Together we can make an impact on the teaching profession, by changing the way the world, and most importantly our youth, see it.

Social media graphics promoting Teacher Appreciation Week will be available on the Department’s [website](#), along with other materials for the statewide teacher recruitment campaign.



The background of the slide is a watercolor-style illustration. It features a central white area that tapers towards the top and bottom, creating a shape reminiscent of a stylized 'V' or a path. This white area is surrounded by various shades of blue, from light sky blue to deep, dark teal. The colors are blended and layered, giving it a soft, artistic feel. The overall composition is clean and modern.

Graduation Pathways

Financial Aid Policy

In December 2015, BESE approved a revision to Bulletin 741, which requires that public school students graduating in spring 2018 and beyond, have taken **one** of the following steps as part of their Individual Graduation Plan:

- submit the [FAFSA](#),
- complete the [Louisiana TOPS form](#),
- submit an opt-out [non-participation form](#), or
- receive a [waiver](#) through school system.

Several resources are available on the [Financial Aid webpage](#) to support schools in ensuring students meet this graduation requirement. LOSFA's [Complete to Compete](#) tool is a way to track school completion rates.

FAFSA Submissions Data

Here are the FAFSA submission rates as of March 30.

We are less than 100 days from the priority submission deadline of July 1.

East Carroll Parish	97%	East Baton Rouge Parish	66%	Vermillion Parish	61%
Iberville Parish	90%	Livingston Parish	66%	Assumption Parish	60%
St. John the Baptist	84%	Madison Parish	66%	Tensas Parish	60%
St. Bernard Parish	82%	Plaquemines Parish	66%	Cameron Parish	59%
St. Charles Parish	78%	Rapides Parish	65%	LaSalle Parish	59%
Washington Parish	78%	St. Helena Parish	65%	Pointe Coupee Parish	59%
Central Community	76%	Zachary Community	65%	St. Martin Parish	58%
Orleans Parish	76%	Bienville Parish	64%	Jackson Parish	57%
West Baton Rouge	76%	Jefferson Davis Parish	64%	Lincoln Parish	57%
St. Tammany Parish	75%	Ouachita Parish	64%	Natchitoches Parish	56%
Grant Parish	74%	Vernon Parish	64%	Morehouse Parish	55%
St. Mary Parish	73%	St. James Parish	63%	Acadia Parish	54%
Winn Parish	73%	St. Landry Parish	63%	Webster Parish	54%
City of Baker School	70%	Tangipahoa Parish	63%	Calcasieu Parish	53%
Avoyelles Parish	69%	Union Parish	63%	Claiborne Parish	53%
Beauregard Parish	69%	Caldwell Parish	62%	Evangeline Parish	53%
Sabine Parish	69%	City of Monroe School	62%	Iberia Parish	53%
Ascension Parish	68%	DeSoto Parish	62%	Red River Parish	53%
Catahoula Parish	67%	Jefferson Parish	62%	Concordia Parish	51%
City of Bogalusa	67%	West Feliciana Parish	62%	West Carroll Parish	51%
LaFourche Parish	67%	Bossier Parish	61%	Terrebonne Parish	50%
Allen Parish	66%	East Feliciana Parish	61%	Franklin Parish	49%
Caddo Parish	66%	Lafayette Parish	61%	Richland Parish	47%

Super Summer Institute (SSI)

Registration for SSI will close on May 1. Sessions for basic and advanced statewide credentials will be offered at multiple locations. The [SSI 2018 pre-planning document](#) provides a list of sessions at each site.

The Department will pay training costs and provide lunch for educators attending SSI. School Systems are responsible for travel, textbooks, and registration fee (\$250/educator) for which Career Development Funds or 2017-2018 Carl Perkins Funds may be used.

June 4-8	Northwest Louisiana (Bossier City)
June 11-15	Bayou (Lockport) and Southwest Louisiana (Lake Charles)
July 16-20	Acadiana (Lafayette) Capital (Gonzales and Livingston) National EMS Academy (Lafayette)
July 23-27	Northwest Louisiana (Bossier City) and Operation Spark (New Orleans)

Super Summer Institute Session Offerings

Proposed sessions by site:

- **Bossier City:** Automotive, Construction, Information Technology, Micro Enterprise, Career Readiness
- **Lafayette:** Agritechology, Business, Construction, Information Technology, Manufacturing, Micro Enterprise, Career Readiness
- **Gonzales:** Business, Micro Enterprise, Career Readiness
- **Lake Charles:** Automotive, Construction, Information Technology, Micro Enterprise, Career Readiness
- **Livingston:** Construction, CTTIE New Instructor Workshop, Healthcare, Information Technology, Micro Enterprise, Career Readiness
- **Lockport:** Automotive, Business, Construction, Healthcare, Information Technology, Micro Enterprise, Career Readiness
- **National EMS Academy:** Healthcare
- **New Orleans:** Fundamentals of JavaScript, Functional Programming, and Web Development

Post-Secondary Transition Courses

Act 250 of the 2017 regular legislative session requires, beginning in 2018-2019 and beyond, that each high school senior not having achieved the established college readiness standards for English and mathematics shall be given the opportunity to take an appropriate transition course.

BESE, in collaboration with public school governing boards and post secondary management boards, shall publish a list of English and Math transition courses designed to improve identified student academic weaknesses. Courses shall align with applicable state content standards.

Transition Courses: Next Steps

Per the law, each public school governing authority shall:

1. Identify rising high school seniors who do not meet established college readiness standards.
2. Provide applicable rising seniors with information on available transition courses designed to address identified college readiness academic weaknesses.
3. Use course assessment data to determine student attainment.
4. Provide appropriate professional development to teachers of transition courses.

Call Summary

Call Summary

Month	Key Deadlines	Support and Resources
April	<ul style="list-style-type: none"> ● April 13: Data Systems Proposed System Changes/Enhancements Feedback Survey due 	<ul style="list-style-type: none"> ● 2018-2019 School System Planning Calendar ● 2018 Teacher Leader Summit overview ● Family Support Toolbox ● Financial Aid webpage ● LOFSA's Complete to Compete Tool ● April 12: Data Coordinator's monthly webinar ● April 12: Student Transcript System (STS) Training ● Apr 17: Monthly Assessment and Accountability Call
May	<ul style="list-style-type: none"> ● May 1: Early Childhood Community Network lead Application due ● May 1: Registration for Super Summer Institute closes ● May 18: Teacher Leader Summit Registration closes ● May 31: Final GOLD® checkpoint 	<ul style="list-style-type: none"> ● SSI 2018 pre-planning document ● May 7: Teacher Appreciation Week ● May 9: May School System Planning call